

# **TENNESSEE ECONOMIC ANALYSIS**

**September 2023**

**NOT TO BE RELEASED BEFORE:**

TIME: 1:30 PM CT

DAY: Thursday, October 19, 2023

**Prepared by:**

**Tennessee Department of Labor and Workforce Development**

**Workforce Insights, Research and Reporting Engine Division**

## Table of Contents

### Economic Indicators

	<u>Page</u>
Briefing Packet Summary	1
Labor Force Estimates Summary - Household Survey	2
Seasonally Adjusted Nonfarm Employment	3
Major Changes in Seasonally Adjusted Nonfarm Employment	3
Business Survey - Not Seasonally Adjusted	4-5

### Appendix

Unemployment Rates, 2012 - 2023	6
Hours and Earnings of Production Workers	7

### Graphs

Tennessee Unemployment Rates	8
Unemployment Rates - U.S. and Tennessee	8
Goods - Producing Jobs in Tennessee	9
Service - Providing Jobs in Tennessee	9

## BRIEFING PACKET SUMMARY

September 2023 pre.

### Unemployment Rates

Tennessee	September 2022	August 2023 rev.	September 2023 pre.	Change From:	
				Year Ago	Month Ago
Not Seasonally Adjusted	3.2%	3.4%	<b>3.4%</b>	0.2%	0.0%
Seasonally Adjusted	3.4%	3.1%	<b>3.2%</b>	-0.2%	0.1%

#### United States

Not Seasonally Adjusted	3.3%	3.9%	<b>3.6%</b>	0.3%	-0.3%
Seasonally Adjusted	3.5%	3.8%	<b>3.8%</b>	0.3%	0.0%

### Hours and Earnings of Production Workers (Manufacturing)

Tennessee	August 2023 rev.	September 2023 pre.	Change
Average Weekly Earnings	\$944.06	\$950.03	\$5.97
Average Weekly Hours	39.8	39.8	0.0
Average Hourly Earnings	\$23.72	\$23.87	\$0.15

#### United States

Average Weekly Earnings	\$1079.57	\$1092.03	\$12.46
Average Weekly Hours	40.8	40.9	0.1
Average Hourly Earnings	\$26.46	\$26.70	\$0.24

### Summary

Over the month, Tennessee's seasonally adjusted unemployment rate increased to 3.2% from last month's 3.1%.

Over the past year, Tennessee's seasonally adjusted unemployment rate decreased to 3.2% from last year's 3.4%.

Over the year, nonfarm employment increased by 54,000 jobs. The largest increases were in Education & Health Services, Leisure & Hospitality, and Government.

Over the month, total nonfarm employment increased by 8,700 jobs. The largest increases were in Mining, Logging, & Construction, Leisure & Hospitality, and Education & Health Services.

## LABOR FORCE ESTIMATES SUMMARY

### HOUSEHOLD SURVEY

<b>Tennessee*</b> Not Seasonally Adjusted	September 2022	Revised August 2023	Preliminary September 2023	Change from September 2022 to September 2023		Change from August 2023 to September 2023	
Civilian Labor Force	3,334,048	3,370,473	<b>3,388,921</b>	54,873	1.6%	18,448	0.5%
Labor Force Participation Rate	59.4%	59.2%	<b>59.4%</b>	0.0	percentage points	0.2	percentage points
Employment	3,227,369	3,257,428	<b>3,272,395</b>	45,026	1.4%	14,967	0.5%
Unemployment	106,679	113,045	<b>116,526</b>	9,847	9.2%	3,481	3.1%
Unemployment Rate	3.2%	3.4%	<b>3.4%</b>	0.2	percentage points	0.0	percentage points

#### Seasonally Adjusted

Civilian Labor Force	3,330,399	3,380,770	<b>3,386,554</b>	56,155	1.7%	5,784	0.2%
Labor Force Participation Rate	59.3%	59.4%	<b>59.4%</b>	0.1	percentage points	0.0	percentage points
Employment	3,216,188	3,275,668	<b>3,278,104</b>	61,916	1.9%	2,436	0.1%
Unemployment	114,211	105,102	<b>108,450</b>	-5,761	-5.0%	3,348	3.2%
Unemployment Rate	3.4%	3.1%	<b>3.2%</b>	-0.2	percentage points	0.1	percentage points

<b>United States**</b> Not Seasonally Adjusted	September 2022	Revised August 2023	Preliminary September 2023	Change from September 2022 to September 2023		Change from August 2023 to September 2023	
Civilian Labor Force	164,463,000	168,049,000	<b>167,718,000</b>	3,255,000	2.0%	-331,000	-0.2%
Labor Force Participation Rate	62.2%	62.9%	<b>62.7%</b>	0.5	percentage points	-0.2	percentage points
Employment	159,003,000	161,427,000	<b>161,669,000</b>	2,666,000	1.7%	242,000	0.1%
Unemployment	5,460,000	6,623,000	<b>6,049,000</b>	589,000	10.8%	-574,000	-8.7%
Unemployment Rate	3.3%	3.9%	<b>3.6%</b>	0.3	percentage points	-0.3	percentage points

#### Seasonally Adjusted

Civilian Labor Force	164,619,000	167,839,000	<b>167,929,000</b>	3,310,000	2.0%	90,000	0.1%
Labor Force Participation Rate	62.3%	62.8%	<b>62.8%</b>	0.5	percentage points	0.0	percentage points
Employment	158,850,000	161,484,000	<b>161,570,000</b>	2,720,000	1.7%	86,000	0.1%
Unemployment	5,770,000	6,355,000	<b>6,360,000</b>	590,000	10.2%	5,000	0.1%
Unemployment Rate	3.5%	3.8%	<b>3.8%</b>	0.3	percentage points	0.0	percentage points

\* Error range for Tennessee estimates cannot be computed

\*\* Error range for U.S. estimates is +/- 0.2%

## Seasonally Adjusted Nonfarm Employment

(numbers in thousands)

Annual Change      Monthly Change

	September 2022	August 2023 rev.	September 2023	September 2022 to September 2023		August 2023 to September 2023	
				Net Chg.	% chg.	Net Chg.	% chg.
				<b>Total Non-Farm</b>	3,275.2	3,320.5	<b>3,329.2</b>
Mining, Logging and Construction	154.2	156.6	<b>159.3</b>	5.1	3.3%	2.7	1.7%
Mining and Logging	4.4	4.3	<b>4.4</b>	0.0	0.0%	0.1	2.3%
Construction	149.8	152.3	<b>154.9</b>	5.1	3.4%	2.6	1.7%
Manufacturing	369.8	370.5	<b>370.4</b>	0.6	0.2%	-0.1	0.0%
Durable Goods Manufacturing	236.2	237.5	<b>236.7</b>	0.5	0.2%	-0.8	-0.3%
Non-Durable Goods Manufacturing	133.6	133.0	<b>133.7</b>	0.1	0.1%	0.7	0.5%
Trade, Transportation, and Utilities	681.2	681.7	<b>683.4</b>	2.2	0.3%	1.7	0.2%
Wholesale Trade	131.3	133.7	<b>134.4</b>	3.1	2.4%	0.7	0.5%
Retail Trade	342.7	345.3	<b>347.0</b>	4.3	1.3%	1.7	0.5%
Transportation, Warehousing, and Utilities	207.2	202.7	<b>202.0</b>	-5.2	-2.5%	-0.7	-0.3%
Information	55.4	55.9	<b>56.0</b>	0.6	1.1%	0.1	0.2%
Financial Activities	177.5	175.8	<b>175.2</b>	-2.3	-1.3%	-0.6	-0.3%
Finance and Insurance	133.7	132.5	<b>132.3</b>	-1.4	-1.0%	-0.2	-0.2%
Real Estate, Rental, and Leasing	43.8	43.3	<b>42.9</b>	-0.9	-2.1%	-0.4	-0.9%
Professional and Business Services	468.8	471.3	<b>470.6</b>	1.8	0.4%	-0.7	-0.1%
Professional, Scientific, and Technical Services	173.7	184.0	<b>184.8</b>	11.1	6.4%	0.8	0.4%
Management of Companies and Enterprises	54.8	55.1	<b>55.1</b>	0.3	0.5%	0.0	0.0%
Administrative, Support, and Waste Services	240.3	232.2	<b>230.7</b>	-9.6	-4.0%	-1.5	-0.6%
Education and Health Services	456.1	469.8	<b>471.7</b>	15.6	3.4%	1.9	0.4%
Educational Services	64.1	63.8	<b>64.7</b>	0.6	0.9%	0.9	1.4%
Health Care and Social Assistance	392.0	406.0	<b>407.0</b>	15.0	3.8%	1.0	0.2%
Leisure and Hospitality	347.7	359.0	<b>361.3</b>	13.6	3.9%	2.3	0.6%
Arts, Entertainment, and Recreation	44.5	44.6	<b>44.8</b>	0.3	0.7%	0.2	0.4%
Accommodation and Food Services	303.2	314.4	<b>316.5</b>	13.3	4.4%	2.1	0.7%
Other Services	126.6	130.6	<b>131.3</b>	4.7	3.7%	0.7	0.5%
Government	437.9	449.3	<b>450.0</b>	12.1	2.8%	0.7	0.2%
Federal Government	52.5	56.6	<b>56.6</b>	4.1	7.8%	0.0	0.0%
State Government	94.4	94.9	<b>95.5</b>	1.1	1.2%	0.6	0.6%
Local Government	291.0	297.8	<b>297.9</b>	6.9	2.4%	0.1	0.0%

### Major Changes in Seasonally Adjusted Nonfarm Employment (in thousands)

#### I. Monthly Change (from August 2023 rev. to September 2023 pre.)

	August 2023 rev.	September 2023 pre.	Change
<b>A. Major Employment Increases</b>			
Mining, Logging and Construction	156.6	159.3	2.7
Leisure and Hospitality	359.0	361.3	2.3
Education and Health Services	469.8	471.7	1.9
<b>B. Major Employment Decreases</b>			
Administrative, Support, and Waste Services	232.2	230.7	-1.5
Durable Goods Manufacturing	237.5	236.7	-0.8
Transportation, Warehousing, and Utilities	202.7	202.0	-0.7

#### II. Yearly Change (from September 2022 to September 2023 pre.)

	September 2022	September 2023 pre.	Change
<b>A. Major Employment Increases</b>			
Education and Health Services	456.1	471.7	15.6
Leisure and Hospitality	347.7	361.3	13.6
Government	437.9	450.0	12.1
<b>B. Major Employment Decreases</b>			
Administrative, Support, and Waste Services	240.3	230.7	-9.6
Transportation, Warehousing, and Utilities	207.2	202.0	-5.2
Finance and Insurance	133.7	132.3	-1.4

# BUSINESS SURVEY - Not Seasonally Adjusted

Estimated Nonfarm Employment by Industry\*

(numbers in thousands)	September 2022	August 2023 rev.	September 2023	Annual Change		Monthly Change	
				September 2022 to September 2023		August 2023 to September 2023	
				Net Chg.	% chg.	Net Chg.	% chg.
Total Non-Farm	3,284.4	3,303.6	<b>3,337.8</b>	53.4	1.6%	34.2	1.0%
Total Private	2,839.7	2,869.6	<b>2,880.3</b>	40.6	1.4%	10.7	0.4%
Goods Producing	523.9	526.4	<b>530.2</b>	6.3	1.2%	3.8	0.7%
Mining, Logging and Construction	155.3	156.9	<b>160.4</b>	5.1	3.3%	3.5	2.2%
Manufacturing	368.6	369.5	<b>369.8</b>	1.2	0.3%	0.3	0.1%
Durable Goods Manufacturing	235.0	237.0	<b>236.2</b>	1.2	0.5%	-0.8	-0.3%
Wood Products	14.2	14.1	<b>14.0</b>	-0.2	-1.4%	-0.1	-0.7%
Non-Metallic Mineral Products	15.3	15.3	<b>15.2</b>	-0.1	-0.7%	-0.1	-0.7%
Primary Metal Products	11.1	10.9	<b>10.9</b>	-0.2	-1.8%	0.0	0.0%
Fabricated Metal Products	42.1	41.7	<b>41.7</b>	-0.4	-1.0%	0.0	0.0%
Machinery Manufacturing	24.7	24.2	<b>24.1</b>	-0.6	-2.4%	-0.1	-0.4%
Computer and Electronic Products	7.0	7.0	<b>6.9</b>	-0.1	-1.4%	-0.1	-1.4%
Electrical Equipment and Appliances	19.1	18.5	<b>18.5</b>	-0.6	-3.1%	0.0	0.0%
Transportation Equipment	74.7	78.6	<b>78.3</b>	3.6	4.8%	-0.3	-0.4%
Furniture and Related Products	9.4	9.3	<b>9.2</b>	-0.2	-2.1%	-0.1	-1.1%
Miscellaneous Durable Manufacturing	17.4	17.4	<b>17.4</b>	0.0	0.0%	0.0	0.0%
Non-Durable Goods Manufacturing	133.6	132.5	<b>133.6</b>	0.0	0.0%	1.1	0.8%
Food Manufacturing	40.2	40.0	<b>40.4</b>	0.2	0.5%	0.4	1.0%
Beverage and Tobacco Products	9.3	9.4	<b>9.5</b>	0.2	2.2%	0.1	1.1%
Paper Manufacturing	13.5	13.4	<b>13.5</b>	0.0	0.0%	0.1	0.7%
Printing and Related Support Activities	8.3	8.4	<b>8.5</b>	0.2	2.4%	0.1	1.2%
Chemical Manufacturing	26.9	26.6	<b>26.8</b>	-0.1	-0.4%	0.2	0.8%
Plastics and Rubber Products	25.3	24.9	<b>25.1</b>	-0.2	-0.8%	0.2	0.8%
Service Providing	2,760.5	2,777.2	<b>2,807.6</b>	47.1	1.7%	30.4	1.1%
Private Service Providing (Service Providing Less Government)	2,315.8	2,343.2	<b>2,350.1</b>	34.3	1.5%	6.9	0.3%
Trade, Transportation, and Utilities	674.7	675.1	<b>679.1</b>	4.4	0.7%	4.0	0.6%
Wholesale Trade	130.9	132.7	<b>134.3</b>	3.4	2.6%	1.6	1.2%
Merchant wholesalers, Durable Goods	77.3	79.8	<b>81.2</b>	3.9	5.0%	1.4	1.8%
Merchant wholesalers, Non-Durable Goods	45.7	45.0	<b>45.1</b>	-0.6	-1.3%	0.1	0.2%
Wholesale Electronic Markets	7.9	7.9	<b>8.0</b>	0.1	1.3%	0.1	1.3%
Retail Trade	338.4	341.9	<b>343.4</b>	5.0	1.5%	1.5	0.4%
Motor Vehicle and Parts Dealers	47.9	48.2	<b>48.7</b>	0.8	1.7%	0.5	1.0%
Furniture and Home Furnishings Stores	9.9	18.7	<b>18.8</b>	8.9	89.9%	0.1	0.5%
Building Material and Garden Supply Stores	33.4	32.9	<b>33.1</b>	-0.3	-0.9%	0.2	0.6%
Food and Beverage Stores	59.2	60.1	<b>60.0</b>	0.8	1.4%	-0.1	-0.2%
Health and Personal Care Stores	26.1	24.7	<b>25.0</b>	-1.1	-4.2%	0.3	1.2%
Gasoline Stations	24.8	26.9	<b>27.0</b>	2.2	8.9%	0.1	0.4%
Clothing and Clothing Accessories Stores	21.7	22.9	<b>23.0</b>	1.3	6.0%	0.1	0.4%
Sporting Goods, Hobby, Book, and Music Stores	31.3	31.2	<b>31.1</b>	-0.2	-0.6%	-0.1	-0.3%
General Merchandise Stores	72.6	76.3	<b>76.7</b>	4.1	5.6%	0.4	0.5%
Transportation, Warehousing, and Utilities	205.4	200.5	<b>201.4</b>	-4.0	-1.9%	0.9	0.4%
Utilities	4.2	4.2	<b>4.2</b>	0.0	0.0%	0.0	0.0%
Transportation and Warehousing	201.2	196.3	<b>197.2</b>	-4.0	-2.0%	0.9	0.5%
Information	55.5	55.6	<b>55.8</b>	0.3	0.5%	0.2	0.4%
Financial Activities	177.5	177.0	<b>175.5</b>	-2.0	-1.1%	-1.5	-0.8%
Finance and Insurance	133.3	133.0	<b>132.0</b>	-1.3	-1.0%	-1.0	-0.8%
Real Estate, Rental, and Leasing	44.2	44.0	<b>43.5</b>	-0.7	-1.6%	-0.5	-1.1%
Professional and Business Services	470.1	472.3	<b>470.4</b>	0.3	0.1%	-1.9	-0.4%
Professional, Scientific, and Technical Services	172.2	183.0	<b>183.5</b>	11.3	6.6%	0.5	0.3%
Management of Companies and Enterprises	54.8	55.1	<b>55.0</b>	0.2	0.4%	-0.1	-0.2%
Administrative, Support, and Waste Services	243.1	234.2	<b>231.9</b>	-11.2	-4.6%	-2.3	-1.0%
Education and Health Services	458.1	465.9	<b>475.5</b>	17.4	3.8%	9.6	2.1%
Educational Services	65.5	59.0	<b>66.1</b>	0.6	0.9%	7.1	12.0%
Health Care and Social Assistance	392.6	406.9	<b>409.4</b>	16.8	4.3%	2.5	0.6%
Ambulatory Health Care Services	168.4	172.4	<b>173.2</b>	4.8	2.9%	0.8	0.5%
Hospitals	112.8	117.7	<b>118.1</b>	5.3	4.7%	0.4	0.3%
Nursing and Residential Care Facilities	57.6	60.7	<b>60.9</b>	3.3	5.7%	0.2	0.3%
Social Assistance	53.8	56.1	<b>57.2</b>	3.4	6.3%	1.1	2.0%
Leisure and Hospitality	353.2	366.2	<b>362.7</b>	9.5	2.7%	-3.5	-1.0%
Arts, Entertainment, and Recreation	46.9	47.7	<b>46.8</b>	-0.1	-0.2%	-0.9	-1.9%
Accommodation and Food Services	306.3	318.5	<b>315.9</b>	9.6	3.1%	-2.6	-0.8%
Accommodation	38.3	40.1	<b>39.0</b>	0.7	1.8%	-1.1	-2.7%
Food Services and Drinking Places	268.0	278.4	<b>276.9</b>	8.9	3.3%	-1.5	-0.5%

Other Services	126.7	131.1	<b>131.1</b>	4.4	3.5%	0.0	0.0%
Government	444.7	434.0	<b>457.5</b>	12.8	2.9%	23.5	5.4%
Federal Government	52.5	56.4	<b>56.7</b>	4.2	8.0%	0.3	0.5%
State Government	97.2	89.4	<b>99.2</b>	2.0	2.1%	9.8	11.0%
State Government Educational Services	57.5	48.7	<b>58.7</b>	1.2	2.1%	10.0	20.5%
State Government Excluding Education	39.7	40.7	<b>40.5</b>	0.8	2.0%	-0.2	-0.5%
Local Government	295.0	288.2	<b>301.6</b>	6.6	2.2%	13.4	4.6%
Local Government Educational Services	147.9	133.4	<b>148.0</b>	0.1	0.1%	14.6	10.9%
Local Government Excluding Education	147.1	154.8	<b>153.6</b>	6.5	4.4%	-1.2	-0.8%

\* Estimates include all full- and part-time nonagricultural wage and salary employees who worked during, or received pay for, any part of the pay period which include the 12th of the month. This is a count of jobs by place of work. Agricultural workers, proprietors, self-employed persons, workers in private households, and unpaid family workers are excluded.

**UNEMPLOYMENT RATES, 2012-2023**  
**U.S. & Tennessee, Seasonally Adjusted & Not Seasonally Adjusted**

	2012				2013				2014				2015			
	U.S.		TN		U.S.		TN		U.S.		TN		U.S.		TN	
	Seas. Adj.	Not Seas. Adj.	Seas. Adj.	Not Seas. Adj.	Seas. Adj.	Not Seas. Adj.	Seas. Adj.	Not Seas. Adj.	Seas. Adj.	Not Seas. Adj.	Seas. Adj.	Not Seas. Adj.	Seas. Adj.	Not Seas. Adj.	Seas. Adj.	Not Seas. Adj.
Jan	8.3	8.8	8.2	8.6	8.0	8.5	8.0 -	8.7 *	6.6	7.0	6.9 *	7.1 *	5.7	6.1	6.1 *	6.6 *
Feb	8.3	8.7	8.1	8.4	7.7	8.1	8.0 *	8.2 *	6.7	7.0	6.8 *	7.1 *	5.5	5.8	6.1 *	6.2 *
Mar	8.2	8.4	8.0	8.1	7.5	7.6	8.0 *	7.9 *	6.7	6.8	6.8 *	6.9 *	5.4	5.6	6.0 *	5.9 *
Apr	8.2	7.7	8.0	7.5	7.6	7.1	8.0 *	7.4 *	6.2	5.9	6.7 *	6.0 *	5.4	5.1	5.9 *	5.3 *
May	8.2	7.9	8.0	7.7	7.5	7.3	7.9 *	7.6 *	6.3	6.1	6.7 *	6.3 *	5.6	5.3	5.8 *	5.6 *
Jun	8.2	8.4	8.0	8.6 *	7.5	7.8	7.9 *	8.5 *	6.1	6.3	6.7 *	7.1 *	5.3	5.5	5.7 *	6.2 *
Jul	8.2	8.6	8.0	8.6 -	7.3	7.7	7.8 *	8.2 *	6.2	6.5	6.6 *	7.3 *	5.2	5.6	5.5 *	6.0 *
Aug	8.1	8.2	7.9	8.0	7.2	7.3	7.7 *	7.7 *	6.1	6.3	6.6 *	6.9 *	5.1	5.2	5.4 *	5.5 *
Sep	7.8	7.6	7.8 -	7.5	7.2	7.0	7.6 *	7.5 *	5.9	5.7	6.5 *	6.4 *	5.0	4.9	5.3 *	5.2 *
Oct	7.8	7.5	7.8 -	7.6 *	7.2	7.0	7.4 *	7.5 *	5.7	5.5	6.4 *	6.1 *	5.0	4.8	5.1 *	5.0 *
Nov	7.7	7.4	7.8 *	7.3	6.9	6.6	7.3 *	6.9 *	5.8	5.5	6.3 *	6.1 *	5.1	4.8	5.0	4.9 *
Dec	7.9	7.6	7.9 -	7.7 *	6.7	6.5	7.1 *	6.8 *	5.6	5.4	6.2 *	5.9 *	5.0	4.8	4.9	4.7
Avg		8.1		8.0		7.4		7.8 *		6.2		6.6 *		5.3		5.6 *

	2016				2017				2018				2019			
	U.S.		TN		U.S.		TN		U.S.		TN		U.S.		TN	
	Seas. Adj.	Not Seas. Adj.	Seas. Adj.	Not Seas. Adj.	Seas. Adj.	Not Seas. Adj.	Seas. Adj.	Not Seas. Adj.	Seas. Adj.	Not Seas. Adj.	Seas. Adj.	Not Seas. Adj.	Seas. Adj.	Not Seas. Adj.	Seas. Adj.	Not Seas. Adj.
Jan	4.8	5.3	4.8 -	5.0	4.7	5.1	4.6	5.0	4.0	4.5	3.5	3.8	4.0	4.4	3.5	3.8
Feb	4.9	5.2	4.7	4.8	4.6	4.9	4.4	4.6	4.1	4.4	3.5	3.6	3.8	4.1	3.4	3.4
Mar	5.0	5.1	4.7	4.7	4.4	4.6	4.2	4.1	4.0	4.1	3.5	3.5	3.8	3.9	3.4	3.5
Apr	5.1	4.7	4.6	4.3	4.4	4.1	3.9	3.4	4.0	3.7	3.5	3.1	3.6	3.3	3.3	2.9
May	4.8	4.5	4.7	4.2	4.4	4.1	3.7	3.2	3.8	3.6	3.5	3.1	3.7	3.4	3.3	3.1
Jun	4.9	5.1	4.7	5.2 *	4.3	4.5	3.6	4.1	4.0	4.2	3.5	4.1	3.6	3.8	3.2	3.8 -
Jul	4.8	5.1	4.8 -	5.2 *	4.3	4.6	3.5	3.9	3.8	4.1	3.5	3.9	3.7	4.0	3.2	3.7
Aug	4.9	5.0	4.8	5.0 -	4.4	4.5	3.4	3.6	3.8	3.9	3.5	3.6	3.7	3.8	3.2	3.3
Sep	5.0	4.8	4.9	4.9 *	4.3	4.1	3.4	3.2	3.7	3.6	3.5	3.4	3.5	3.3	3.3	3.1
Oct	4.9	4.7	4.9 -	4.7 -	4.2	3.9	3.4	3.3	3.8	3.5	3.5	3.4	3.6	3.3	3.4	3.3 -
Nov	4.7	4.4	4.8	4.5 *	4.2	3.9	3.4	3.2	3.8	3.5	3.5	3.1	3.6	3.3	3.4	3.1
Dec	4.7	4.5	4.7 -	4.5 -	4.1	3.9	3.5	3.2	3.9	3.7	3.5	3.2	3.6	3.4	3.5	3.2
Avg		4.9		4.7		4.4		3.7		3.9		3.5		3.7		3.3

	2020				2021				2022				2023			
	U.S.		TN		U.S.		TN		U.S.		TN		U.S.		TN	
	Seas. Adj.	Not Seas. Adj.	Seas. Adj.	Not Seas. Adj.	Seas. Adj.	Not Seas. Adj.	Seas. Adj.	Not Seas. Adj.	Seas. Adj.	Not Seas. Adj.	Seas. Adj.	Not Seas. Adj.	Seas. Adj.	Not Seas. Adj.	Seas. Adj.	Not Seas. Adj.
Jan	3.5	4.0	3.5 -	3.7	6.3	6.8	5.4	5.6	4.0	4.4	3.5	3.7	3.4	3.9	3.5 *	3.5
Feb	3.5	3.8	3.5 -	3.4	6.2	6.6	5.3	5.3	3.8	4.1	3.4	3.5	3.6	3.9	3.5	3.6
Mar	4.4	4.5	3.5	3.9	6.1	6.2	5.1	5.2	3.6	3.8	3.3	3.2	3.5	3.6	3.4	3.1
Apr	14.7	14.4	15.8 *	15.0 *	6.1	5.7	5.0	4.7	3.6	3.3	3.3	3.1	3.4	3.1	3.3	2.6
May	13.2	13.0	12.1	11.8	5.8	5.5	4.8	4.6	3.6	3.4	3.2	3.2	3.7	3.4	3.3	3.2
Jun	11.0	11.2	10.1	10.8	5.9	6.1	4.6	5.6	3.6	3.8	3.2	4.0 *	3.6	3.8	3.2	3.8 -
Jul	10.2	10.5	9.0	10.1	5.4	5.7	4.4	4.9	3.5	3.8	3.3	3.7	3.5	3.8	3.1	3.6
Aug	8.4	8.5	7.7	7.8	5.2	5.3	4.2	4.4	3.7	3.8	3.3	3.6	3.8	3.9	3.1	3.4
Sep	7.9	7.7	7.1	6.9	4.8	4.6	4.0	3.8	3.5	3.3	3.4	3.2	3.8	3.6	3.2	3.4
Oct	6.9	6.6	6.4	6.0	4.5	4.3	3.8	3.5	3.7	3.4	3.5	3.4 -				
Nov	6.7	6.4	6.0	5.4	4.2	3.9	3.7	3.2	3.6	3.4	3.5	3.2				
Dec	6.7	6.5	5.7	5.4	3.9	3.7	3.6	3.1	3.5	3.3	3.5 -	2.9				
Avg		8.1		7.5		5.3		4.5		3.6		3.4				

\* Designates when Tennessee's unemployment rate is greater than the U.S. rate  
- Designates when Tennessee's unemployment rate is equal to the U.S. rate



## HOURS AND EARNINGS OF PRODUCTION WORKERS

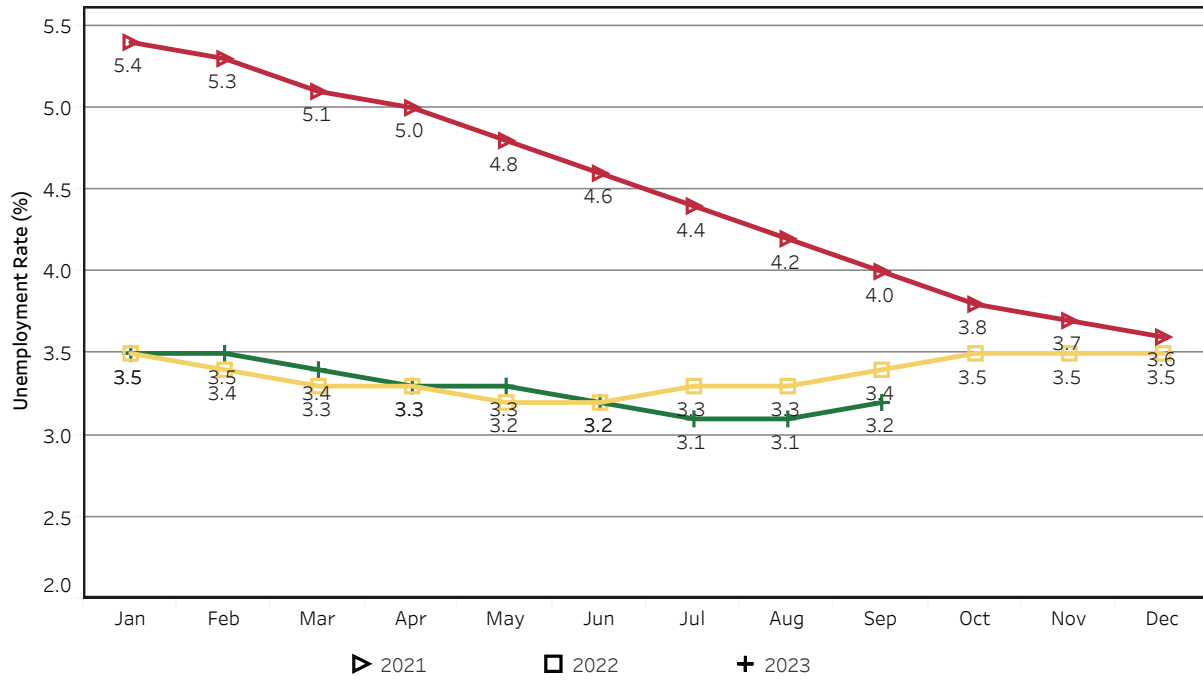
	Average Weekly Earning			Average Weekly Hours			Average Hourly Earning		
	September 2022	August 2023	September 2023	September 2022	August 2023	September 2023	September 2022	August 2023	September 2023
<b>Manufacturing</b>	\$906.19	\$944.06	\$950.03	40.6	39.8	39.8	\$22.32	\$23.72	\$23.87
<b>Durable Goods</b>	959.14	1012.23	1000.76	41.2	41.4	40.5	23.28	24.45	24.71
<b>Non-Durable Goods</b>	817.74	828.44	863.48	39.6	37.1	38.6	20.65	22.33	22.37

## HOURS AND EARNINGS OF PRODUCTION WORKERS - ALL MANUFACTURING

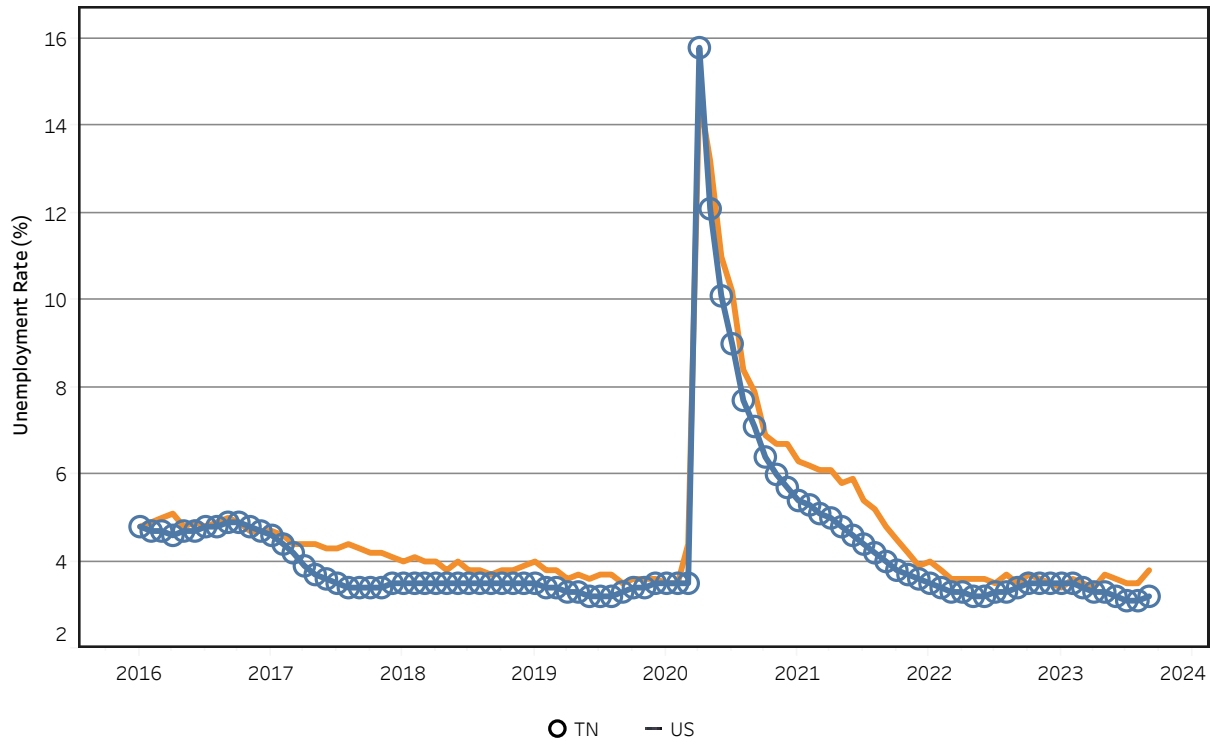
(ranked August 2023 preliminary average weekly earnings; September 2023 will be available later this month)

	Average Weekly Earning			Average Weekly Hours			Average Hourly Earning		
	August 2022	August 2023	Percent Change	August 2022	August 2023	Percent Change	August 2022	August 2023	Percent Change
<b>FLORIDA</b>	\$1104.9	\$1213.84	9.9%	41.40	41.90	1.2%	\$26.69	\$28.97	8.5%
<b>VIRGINIA</b>	\$951.16	\$1037.08	9.0%	43.00	41.70	-3.0%	\$22.12	\$24.87	12.4%
<b>KENTUCKY</b>	\$972.73	\$1030.02	5.9%	40.70	41.60	2.2%	\$23.90	\$24.76	3.6%
<b>GEORGIA</b>	\$977.87	\$1013.63	3.7%	41.70	42.50	1.9%	\$23.45	\$23.85	1.7%
<b>ALABAMA</b>	\$974.27	\$991.63	1.8%	41.60	41.70	0.2%	\$23.42	\$23.78	1.5%
<b>TENNESSEE</b>	\$931.35	\$951.97	2.2%	42.20	40.10	-5.0%	\$22.07	\$23.74	7.6%
<b>SOUTH CAROLINA</b>	\$974.03	\$939.62	-3.5%	40.10	37.60	-6.2%	\$24.29	\$24.99	2.9%
<b>NORTH CAROLINA</b>	\$875.67	\$890.43	1.7%	40.90	40.20	-1.7%	\$21.41	\$22.15	3.5%
<b>MISSISSIPPI</b>	\$856.49	\$870.69	1.7%	41.00	41.80	2.0%	\$20.89	\$20.83	-0.3%
<b>ARKANSAS</b>	\$786.95	\$866.05	10.1%	38.90	39.80	2.3%	\$20.23	\$21.76	7.6%

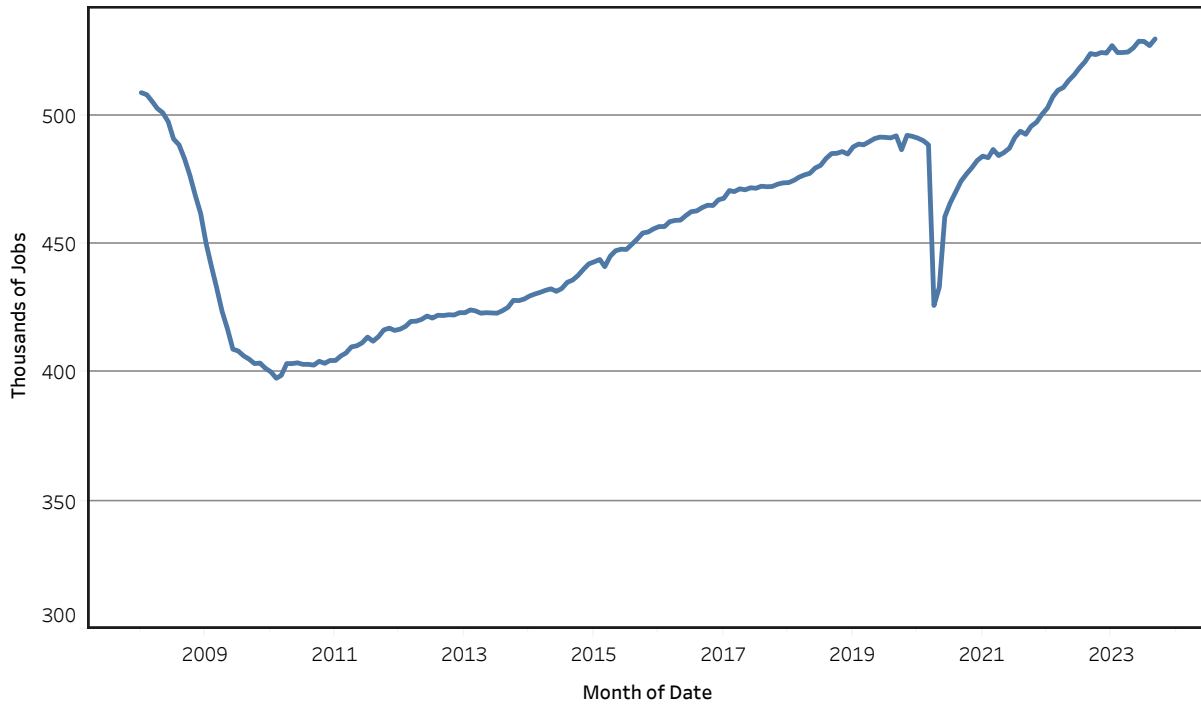
## Unemployment Rates - Tennessee Seasonally Adjusted - 2021 to 2023



## Unemployment Rates - US & Tennessee Seasonally Adjusted - January 2016 to September 2023



## Goods - Producing Jobs in Tennessee Seasonally Adjusted - Jan 2008 to Sep 2023



## Service - Providing Jobs in Tennessee Seasonally Adjusted - Jan 2008 to Sep 2023

