

TENNESSEE ECONOMIC ANALYSIS

October 2022

NOT TO BE RELEASED BEFORE:

TIME: 1:30 PM CT

DAY: Thursday, November 17, 2022

Prepared by:

Tennessee Department of Labor and Workforce Development

Workforce Insights, Research and Reporting Engine Division

Table of Contents

Economic Indicators

	<u>Page</u>
Briefing Packet Summary	1
Labor Force Estimates Summary - Household Survey	2
Seasonally Adjusted Nonfarm Employment	3
Major Changes in Seasonally Adjusted Nonfarm Employment	3
Business Survey - Not Seasonally Adjusted	4-5

Appendix

Unemployment Rates, 2011 - 2022	6
Hours and Earnings of Production Workers	7

Graphs

Tennessee Unemployment Rates	8
Unemployment Rates - U.S. and Tennessee	8
Goods - Producing Jobs in Tennessee	9
Service - Providing Jobs in Tennessee	9

BRIEFING PACKET SUMMARY

October 2022 pre.

Unemployment Rates

Tennessee	October 2021	September 2022 rev.	October 2022 pre.	Change From:	
				Year Ago	Month Ago
Not Seasonally Adjusted	3.3%	3.0%	3.5%	0.2%	0.5%
Seasonally Adjusted	3.7%	3.4%	3.5%	-0.2%	0.1%

United States

Not Seasonally Adjusted	4.3%	3.3%	3.4%	-0.9%	0.1%
Seasonally Adjusted	4.6%	3.5%	3.7%	-0.9%	0.2%

Hours and Earnings of Production Workers (Manufacturing)

Tennessee	September 2022 rev.	October 2022 pre.	Change
Average Weekly Earnings	\$907.41	\$927.63	\$20.22
Average Weekly Hours	40.6	41.1	0.5
Average Hourly Earnings	\$22.35	\$22.57	\$0.22

United States

Average Weekly Earnings	\$1043.18	\$1045.24	\$2.06
Average Weekly Hours	41.2	41.2	0.0
Average Hourly Earnings	\$25.32	\$25.37	\$0.05

Summary

Tennessee's October seasonally adjusted unemployment rate increased to 3.5% from September's 3.4%.

Over the past year Tennessee's seasonally adjusted rate unemployment rate decreased from 3.7% to 3.5% while the U.S rate decreased from 4.6% to 3.7%.

Over the year, nonfarm employment increased 123,200 jobs. The largest increases were in Leisure and Hospitality, Trade Transportation & Utilities, and Education and Health Services.

Over the month, total nonfarm employment increased 5,800 jobs. The largest increases were in Accommodation & Food Services, Construction, and Professional, Scientific & Technical Services.

LABOR FORCE ESTIMATES SUMMARY

HOUSEHOLD SURVEY

Tennessee* Not Seasonally Adjusted	October 2021	Revised September 2022	Preliminary October 2022	Change from October 2021 to October 2022		Change from September 2022 to October 2022	
Civilian Labor Force	3,338,461	3,337,582	3,334,925	-3,536	-0.1%	-2,657	-0.1%
Labor Force Participation Rate	60.4%	59.6%	59.5%	-0.9	percentage points	-0.1	percentage points
Employment	3,227,042	3,236,158	3,219,428	-7,614	-0.2%	-16,730	-0.5%
Unemployment	111,419	101,424	115,497	4,078	3.7%	14,073	13.9%
Unemployment Rate	3.3%	3.0%	3.0%	-0.3	percentage points	0.0	percentage points

Seasonally Adjusted

Civilian Labor Force	3,338,298	3,385,971	3,368,280	29,982	0.9%	-17,691	-0.5%
Labor Force Participation Rate	60.4%	60.5%	60.1%	-0.3	percentage points	-0.4	percentage points
Employment	3,216,223	3,271,534	3,251,720	35,497	1.1%	-19,814	-0.6%
Unemployment	122,075	114,437	116,560	-5,515	-4.5%	2,123	1.9%
Unemployment Rate	3.7%	3.4%	3.5%	-0.2	percentage points	0.1	percentage points

United States** Not Seasonally Adjusted	October 2021	Revised September 2022	Preliminary October 2022	Change from October 2021 to October 2022		Change from September 2022 to October 2022	
Civilian Labor Force	161,863,000	164,463,000	164,753,000	2,890,000	1.8%	290,000	0.2%
Labor Force Participation Rate	61.8%	62.2%	62.3%	0.5	percentage points	0.1	percentage points
Employment	154,966,000	159,003,000	159,144,000	4,178,000	2.7%	141,000	0.1%
Unemployment	6,896,000	5,460,000	5,609,000	-1,287,000	-18.7%	149,000	2.7%
Unemployment Rate	4.3%	3.3%	3.4%	-0.9	percentage points	0.1	percentage points

Seasonally Adjusted

Civilian Labor Force	161,610,000	164,689,000	164,667,000	3,057,000	1.9%	-22,000	0.0%
Labor Force Participation Rate	61.7%	62.3%	62.2%	0.5	percentage points	-0.1	percentage points
Employment	154,234,000	158,936,000	158,608,000	4,374,000	2.8%	-328,000	-0.2%
Unemployment	7,375,000	5,753,000	6,059,000	-1,316,000	-17.8%	306,000	5.3%
Unemployment Rate	4.6%	3.5%	3.7%	-0.9	percentage points	0.2	percentage points

* Error range for Tennessee estimates cannot be computed

** Error range for U.S. estimates is +/- 0.2%

Seasonally Adjusted Nonfarm Employment

(numbers in thousands)

Annual Change Monthly Change

October 2021 to October 2022		September 2022 to October 2022	
Net Chg.	% chg.	Net Chg.	% chg.

	October 2021	September 2022	October 2022 pre.	Net Chg.	% chg.	Net Chg.	% chg.
Total Non-Farm	3,138.5	3,255.9	3,261.7	123.2	3.9%	5.8	0.2%
Mining, Logging and Construction	145.5	153.8	155.4	9.9	6.8%	1.6	1.0%
Mining and Logging	4.3	4.5	4.6	0.3	7.0%	0.1	2.2%
Construction	141.2	149.3	150.8	9.6	6.8%	1.5	1.0%
Manufacturing	353.3	363.2	364.2	10.9	3.1%	1.0	0.3%
Durable Goods Manufacturing	224.5	235.8	236.2	11.7	5.2%	0.4	0.2%
Non-Durable Goods Manufacturing	128.8	127.4	128.0	-0.8	-0.6%	0.6	0.5%
Trade, Transportation, and Utilities	660.4	683.6	685.1	24.7	3.7%	1.5	0.2%
Wholesale Trade	122.3	129.9	130.6	8.3	6.8%	0.7	0.5%
Retail Trade	336.4	343.7	344.6	8.2	2.4%	0.9	0.3%
Transportation, Warehousing, and Utilities	201.7	210.0	209.9	8.2	4.1%	-0.1	0.0%
Information	49.0	49.8	49.7	0.7	1.4%	-0.1	-0.2%
Financial Activities	172.7	180.3	179.7	7.0	4.1%	-0.6	-0.3%
Finance and Insurance	131.7	136.4	135.3	3.6	2.7%	-1.1	-0.8%
Real Estate, Rental, and Leasing	41.0	43.9	44.4	3.4	8.3%	0.5	1.1%
Professional and Business Services	439.4	450.0	450.7	11.3	2.6%	0.7	0.2%
Professional, Scientific, and Technical Services	160.8	167.4	168.9	8.1	5.0%	1.5	0.9%
Management of Companies and Enterprises	53.3	54.5	54.3	1.0	1.9%	-0.2	-0.4%
Administrative, Support, and Waste Services	225.3	228.1	227.5	2.2	1.0%	-0.6	-0.3%
Education and Health Services	437.9	457.6	458.6	20.7	4.7%	1.0	0.2%
Educational Services	60.5	65.3	65.4	4.9	8.1%	0.1	0.2%
Health Care and Social Assistance	377.4	392.3	393.2	15.8	4.2%	0.9	0.2%
Leisure and Hospitality	327.3	355.5	356.9	29.6	9.0%	1.4	0.4%
Arts, Entertainment, and Recreation	40.5	46.3	45.9	5.4	13.3%	-0.4	-0.9%
Accommodation and Food Services	286.8	309.2	311.0	24.2	8.4%	1.8	0.6%
Other Services	124.3	127.6	126.8	2.5	2.0%	-0.8	-0.6%
Government	428.7	434.5	434.6	5.9	1.4%	0.1	0.0%
Federal Government	51.8	52.5	53.1	1.3	2.5%	0.6	1.1%
State Government	93.2	94.0	93.6	0.4	0.4%	-0.4	-0.4%
Local Government	283.7	288.0	287.9	4.2	1.5%	-0.1	0.0%

Major Changes in Seasonally Adjusted Nonfarm Employment (in thousands)

I. Monthly Change (from September 2022 rev. to October 2022 pre.)

	September 2022 rev.	October 2022 pre.	Change
A. Major Employment Increases			
Accommodation and Food Services	309.2	311.0	1.8
Construction	149.3	150.8	1.5
Professional, Scientific, and Technical Services	167.4	168.9	1.5
B. Major Employment Decreases			
Finance and Insurance	136.4	135.3	-1.1
Administrative, Support, and Waste Services	228.1	227.5	-0.6
Arts, Entertainment, and Recreation	46.3	45.9	-0.4

II. Yearly Change (from October 2021 to October 2022 pre.)

	October 2021	October 2022 pre.	Change
A. Major Employment Increases			
Leisure and Hospitality	327.3	356.9	29.6
Trade, Transportation, and Utilities	660.4	685.1	24.7
Education and Health Services	437.9	458.6	20.7
B. Major Employment Decreases			
Non-Durable Goods Manufacturing	128.8	128.0	-0.8

BUSINESS SURVEY - Not Seasonally Adjusted

Estimated Nonfarm Employment by Industry*

(numbers in thousands)	October 2021	September 2022	October 2022 pre.	Annual Change		Monthly Change	
				October 2021 to October 2022		September 2022 to October 2022	
				Net Chg.	% chg.	Net Chg.	% chg.
Total Non-Farm	3,162.0	3,269.6	3,285.3	123.3	3.9%	15.7	0.5%
Total Private	2,721.3	2,826.9	2,838.4	117.1	4.3%	11.5	0.4%
Goods Producing	499.1	517.9	519.9	20.8	4.2%	2.0	0.4%
Mining, Logging and Construction	146.8	155.8	156.6	9.8	6.7%	0.8	0.5%
Manufacturing	352.3	362.1	363.3	11.0	3.1%	1.2	0.3%
Durable Goods Manufacturing	223.6	235.0	235.4	11.8	5.3%	0.4	0.2%
Wood Products	13.3	14.1	14.1	0.8	6.0%	0.0	0.0%
Non-Metallic Mineral Products	14.0	14.9	14.9	0.9	6.4%	0.0	0.0%
Primary Metal Products	11.2	11.5	11.5	0.3	2.7%	0.0	0.0%
Fabricated Metal Products	40.2	42.4	42.3	2.1	5.2%	-0.1	-0.2%
Machinery Manufacturing	24.5	24.8	24.9	0.4	1.6%	0.1	0.4%
Computer and Electronic Products	6.3	6.6	6.6	0.3	4.8%	0.0	0.0%
Electrical Equipment and Appliances	18.8	19.5	19.6	0.8	4.3%	0.1	0.5%
Transportation Equipment	69.0	73.6	73.8	4.8	7.0%	0.2	0.3%
Furniture and Related Products	9.9	10.3	10.3	0.4	4.0%	0.0	0.0%
Miscellaneous Durable Manufacturing	16.4	17.3	17.4	1.0	6.1%	0.1	0.6%
Non-Durable Goods Manufacturing	128.7	127.1	127.9	-0.8	-0.6%	0.8	0.6%
Food Manufacturing	37.9	37.5	37.7	-0.2	-0.5%	0.2	0.5%
Beverage and Tobacco Products	8.6	8.5	8.6	0.0	0.0%	0.1	1.2%
Paper Manufacturing	12.3	12.0	12.1	-0.2	-1.6%	0.1	0.8%
Printing and Related Support Activities	8.2	7.9	7.9	-0.3	-3.7%	0.0	0.0%
Chemical Manufacturing	26.2	25.6	25.8	-0.4	-1.5%	0.2	0.8%
Plastics and Rubber Products	24.2	24.5	24.7	0.5	2.1%	0.2	0.8%
Service Providing	2,662.9	2,751.7	2,765.4	102.5	3.8%	13.7	0.5%
Private Service Providing (Service Providing Less Government)	2,222.2	2,309.0	2,318.5	96.3	4.3%	9.5	0.4%
Trade, Transportation, and Utilities	659.7	680.5	684.3	24.6	3.7%	3.8	0.6%
Wholesale Trade	122.4	130.1	130.9	8.5	6.9%	0.8	0.6%
Merchant wholesalers, Durable Goods	71.9	77.9	78.7	6.8	9.5%	0.8	1.0%
Merchant wholesalers, Non-Durable Goods	43.3	44.7	44.6	1.3	3.0%	-0.1	-0.2%
Wholesale Electronic Markets	7.2	7.5	7.6	0.4	5.6%	0.1	1.3%
Retail Trade	335.2	340.1	343.2	8.0	2.4%	3.1	0.9%
Motor Vehicle and Parts Dealers	46.7	48.2	48.5	1.8	3.9%	0.3	0.6%
Furniture and Home Furnishings Stores	10.0	9.9	10.1	0.1	1.0%	0.2	2.0%
Building Material and Garden Supply Stores	30.6	32.7	32.1	1.5	4.9%	-0.6	-1.8%
Food and Beverage Stores	55.0	56.9	56.9	1.9	3.5%	0.0	0.0%
Health and Personal Care Stores	25.6	26.1	26.6	1.0	3.9%	0.5	1.9%
Gasoline Stations	24.1	24.8	25.1	1.0	4.1%	0.3	1.2%
Clothing and Clothing Accessories Stores	21.0	21.7	22.3	1.3	6.2%	0.6	2.8%
Sporting Goods, Hobby, Book, and Music Stores	11.4	11.4	11.6	0.2	1.8%	0.2	1.8%
General Merchandise Stores	73.3	72.4	73.1	-0.2	-0.3%	0.7	1.0%
Miscellaneous Store Retailers	18.0	18.6	18.7	0.7	3.9%	0.1	0.5%
Non-Store Retailers	8.3	8.4	8.6	0.3	3.6%	0.2	2.4%
Transportation, Warehousing, and Utilities	202.1	210.3	210.2	8.1	4.0%	-0.1	0.0%
Utilities	3.9	4.0	4.0	0.1	2.6%	0.0	0.0%
Transportation and Warehousing	198.2	206.3	206.2	8.0	4.0%	-0.1	0.0%
Information	49.4	49.8	49.9	0.5	1.0%	0.1	0.2%
Financial Activities	173.0	180.6	180.0	7.0	4.0%	-0.6	-0.3%
Finance and Insurance	131.9	136.3	135.5	3.6	2.7%	-0.8	-0.6%
Real Estate, Rental, and Leasing	41.1	44.3	44.5	3.4	8.3%	0.2	0.5%
Professional and Business Services	443.8	451.9	454.5	10.7	2.4%	2.6	0.6%
Professional, Scientific, and Technical Services	160.4	166.0	168.6	8.2	5.1%	2.6	1.6%
Management of Companies and Enterprises	53.6	54.4	54.5	0.9	1.7%	0.1	0.2%
Administrative, Support, and Waste Services	229.8	231.5	231.4	1.6	0.7%	-0.1	0.0%
Education and Health Services	442.5	461.0	463.9	21.4	4.8%	2.9	0.6%
Educational Services	63.6	67.1	68.5	4.9	7.7%	1.4	2.1%
Health Care and Social Assistance	378.9	393.9	395.4	16.5	4.4%	1.5	0.4%
Ambulatory Health Care Services	160.6	165.4	166.8	6.2	3.9%	1.4	0.8%
Hospitals	110.4	113.8	114.3	3.9	3.5%	0.5	0.4%
Nursing and Residential Care Facilities	56.2	59.6	59.7	3.5	6.2%	0.1	0.2%
Social Assistance	51.7	55.1	54.6	2.9	5.6%	-0.5	-0.9%
Leisure and Hospitality	329.0	357.8	358.5	29.5	9.0%	0.7	0.2%
Arts, Entertainment, and Recreation	41.0	47.6	45.8	4.8	11.7%	-1.8	-3.8%

Accommodation and Food Services	288.0	310.2	312.7	24.7	8.6%	2.5	0.8%
Accommodation	34.6	36.1	36.9	2.3	6.6%	0.8	2.2%
Food Services and Drinking Places	253.4	274.1	275.8	22.4	8.8%	1.7	0.6%
Other Services	124.8	127.4	127.4	2.6	2.1%	0.0	0.0%
Government	440.7	442.7	446.9	6.2	1.4%	4.2	0.9%
Federal Government	51.7	52.5	53.1	1.4	2.7%	0.6	1.1%
State Government	98.5	97.5	98.8	0.3	0.3%	1.3	1.3%
State Government Educational Services	58.5	58.1	59.3	0.8	1.4%	1.2	2.1%
State Government Excluding Education	40.0	39.4	39.5	-0.5	-1.3%	0.1	0.3%
Local Government	290.5	292.7	295.0	4.5	1.5%	2.3	0.8%
Local Government Educational Services	146.6	147.8	149.7	3.1	2.1%	1.9	1.3%
Local Government Excluding Education	143.9	144.9	145.3	1.4	1.0%	0.4	0.3%

* Estimates include all full- and part-time nonagricultural wage and salary employees who worked during, or received pay for, any part of the pay period which include the 12th of the month. This is a count of jobs by place of work. Agricultural workers, proprietors, self-employed persons, workers in private households, and unpaid family workers are excluded.

Unemployment Rates, 2011-2022

U.S. & Tennessee, Seasonally Adjusted & Not Seasonally Adjusted

	2011				2012				2013				2014			
	U.S.		TN		U.S.		TN		U.S.		TN		U.S.		TN	
	Seas. Adj.	Not Seas. Adj.	Seas. Adj.	Not Seas. Adj.	Seas. Adj.	Not Seas. Adj.	Seas. Adj.	Not Seas. Adj.	Seas. Adj.	Not Seas. Adj.	Seas. Adj.	Not Seas. Adj.	Seas. Adj.	Not Seas. Adj.	Seas. Adj.	Not Seas. Adj.
Jan	9.1	9.8	9.6 *	10.2 *	8.3	8.8	8.2	8.6	8.0	8.5	8.0 -	8.7 *	6.6	7.0	6.9 *	7.1 *
Feb	9.0	9.5	9.5 *	9.8 *	8.3	8.7	8.1	8.4	7.7	8.1	8.0 *	8.2 *	6.7	7.0	6.8 *	7.1 *
Mar	9.0	9.2	9.4 *	9.5 *	8.2	8.4	8.0	8.1	7.5	7.6	8.0 *	7.9 *	6.7	6.8	6.8 *	6.9 *
Apr	9.1	8.7	9.3 *	8.9 *	8.2	7.7	8.0	7.5	7.6	7.1	8.0 *	7.4 *	6.2	5.9	6.7 *	6.0 *
May	9.0	8.7	9.3 *	8.9 *	8.2	7.9	8.0	7.7	7.5	7.3	7.9 *	7.6 *	6.3	6.1	6.7 *	6.3 *
Jun	9.1	9.3	9.2 *	9.8 *	8.2	8.4	8.0	8.6 *	7.5	7.8	7.9 *	8.5 *	6.1	6.3	6.7 *	7.1 *
Jul	9.0	9.3	9.2 *	9.4 *	8.2	8.6	8.0	8.6 -	7.3	7.7	7.8 *	8.2 *	6.2	6.5	6.6 *	7.3 *
Aug	9.0	9.1	9.1 *	9.2 *	8.1	8.2	7.9	8.0	7.2	7.3	7.7 *	7.7 *	6.1	6.3	6.6 *	6.9 *
Sep	9.0	8.8	8.9	8.9 *	7.8	7.6	7.8 -	7.5	7.2	7.0	7.6 *	7.5 *	5.9	5.7	6.5 *	6.4 *
Oct	8.8	8.5	8.8 -	8.5 -	7.8	7.5	7.8 -	7.6 *	7.2	7.0	7.4 *	7.5 *	5.7	5.5	6.4 *	6.1 *
Nov	8.6	8.2	8.6 -	8.1	7.7	7.4	7.8 *	7.3	6.9	6.6	7.3 *	6.9 *	5.8	5.5	6.3 *	6.1 *
Dec	8.5	8.3	8.4	8.1	7.9	7.6	7.9 -	7.7 *	6.7	6.5	7.1 *	6.8 *	5.6	5.4	6.2 *	5.9 *
Avg	8.9		9.1*		8.1		8.0		7.4		7.8*		6.2		6.6*	

	2015				2016				2017				2018			
	U.S.		TN		U.S.		TN		U.S.		TN		U.S.		TN	
	Seas. Adj.	Not Seas. Adj.	Seas. Adj.	Not Seas. Adj.	Seas. Adj.	Not Seas. Adj.	Seas. Adj.	Not Seas. Adj.	Seas. Adj.	Not Seas. Adj.	Seas. Adj.	Not Seas. Adj.	Seas. Adj.	Not Seas. Adj.	Seas. Adj.	Not Seas. Adj.
Jan	5.7	6.1	6.1 *	6.6 *	4.8	5.3	4.8 -	5.0	4.7	5.1	4.6	5.0	4.0	4.5	3.5	3.8
Feb	5.5	5.8	6.1 *	6.2 *	4.9	5.2	4.7	4.8	4.6	4.9	4.4	4.6	4.1	4.4	3.5	3.7
Mar	5.4	5.6	6.0 *	5.9 *	5.0	5.1	4.7	4.7	4.4	4.6	4.2	4.1	4.0	4.1	3.5	3.5
Apr	5.4	5.1	5.9 *	5.3 *	5.1	4.7	4.6	4.3	4.4	4.1	3.9	3.4	4.0	3.7	3.5	3.0
May	5.6	5.3	5.8 *	5.6 *	4.8	4.5	4.7	4.2	4.4	4.1	3.7	3.2	3.8	3.6	3.5	3.1
Jun	5.3	5.5	5.7 *	6.2 *	4.9	5.1	4.7	5.2 *	4.3	4.5	3.6	4.1	4.0	4.2	3.5	4.1
Jul	5.2	5.6	5.5 *	6.0 *	4.8	5.1	4.8 -	5.2 *	4.3	4.6	3.5	3.9	3.8	4.1	3.5	3.9
Aug	5.1	5.2	5.4 *	5.5 *	4.9	5.0	4.8	5.0 -	4.4	4.5	3.4	3.6	3.8	3.9	3.5	3.6
Sep	5.0	4.9	5.3 *	5.2 *	5.0	4.8	4.9	4.9 *	4.3	4.1	3.4	3.2	3.7	3.6	3.5	3.4
Oct	5.0	4.8	5.1 *	5.0 *	4.9	4.7	4.9 -	4.7 -	4.2	3.9	3.4	3.3	3.8	3.5	3.5	3.4
Nov	5.1	4.8	5.0	4.9 *	4.7	4.4	4.8	4.5 *	4.2	3.9	3.4	3.2	3.8	3.5	3.5	3.1
Dec	5.0	4.8	4.9	4.7	4.7	4.5	4.7 -	4.5 -	4.1	3.9	3.5	3.2	3.9	3.7	3.5	3.2
Avg	5.3		5.6*		4.9		4.7		4.4		3.7		3.9		3.5	

	2019				2020				2021				2022			
	U.S.		TN		U.S.		TN		U.S.		TN		U.S.		TN	
	Seas. Adj.	Not Seas. Adj.	Seas. Adj.	Not Seas. Adj.	Seas. Adj.	Not Seas. Adj.	Seas. Adj.	Not Seas. Adj.	Seas. Adj.	Not Seas. Adj.	Seas. Adj.	Not Seas. Adj.	Seas. Adj.	Not Seas. Adj.	Seas. Adj.	Not Seas. Adj.
Jan	4.0	4.4	3.5	3.9	3.5	4.0	3.6	3.8	6.4	6.8	5.2	5.6	4.0	4.4	3.5	3.7
Feb	3.8	4.1	3.4	3.5	3.5	3.8	3.6	3.6	6.2	6.6	5.0	5.2	3.8	4.1	3.4	3.3
Mar	3.8	3.9	3.4	3.5	4.4	4.5	3.6	4.0	6.0	6.2	4.9	4.9	3.6	3.8	3.2	3.0
Apr	3.6	3.3	3.4	2.9	14.7	14.4	15.9*	15.3 *	6.0	5.7	4.8	4.4	3.6	3.3	3.2	3.1
May	3.6	3.4	3.3	3.1	13.2	13.0	12.1	11.8	5.8	5.5	4.6	4.3	3.6	3.4	3.3	3.4 -
Jun	3.6	3.8	3.3	3.9 *	11.0	11.2	10.1	10.6	5.9	6.1	4.4	5.3	3.6	3.8	3.3	4.2 *
Jul	3.7	4.0	3.3	3.7	10.2	10.5	8.8	9.8	5.4	5.7	4.2	4.6	3.5	3.8	3.3	4.0 *
Aug	3.7	3.8	3.3	3.3	8.4	8.5	7.5	7.5	5.2	5.3	4.0	4.1	3.7	3.8	3.4	3.5
Sep	3.5	3.3	3.4	3.1	7.9	7.7	6.9	6.6	4.7	4.6	3.8	3.6	3.5	3.3	3.4	3.0
Oct	3.6	3.3	3.4	3.3 -	6.9	6.6	6.1	5.8	4.6	4.3	3.7	3.3	3.7	3.4	3.5	3.5*
Nov	3.6	3.3	3.5	3.2	6.7	6.4	5.7	5.2	4.2	3.9	3.6	3.1				
Dec	3.6	3.4	3.6	3.3	6.7	6.5	5.5	5.2	3.9	3.7	3.6	3.1				
Avg	3.7		3.4		8.1		7.4		5.3		4.3					

* Designates when Tennessee's unemployment rate is greater than the U.S. rate

- Designates when Tennessee's unemployment rate is equal to the U.S. rate

HOURS AND EARNINGS OF PRODUCTION WORKERS

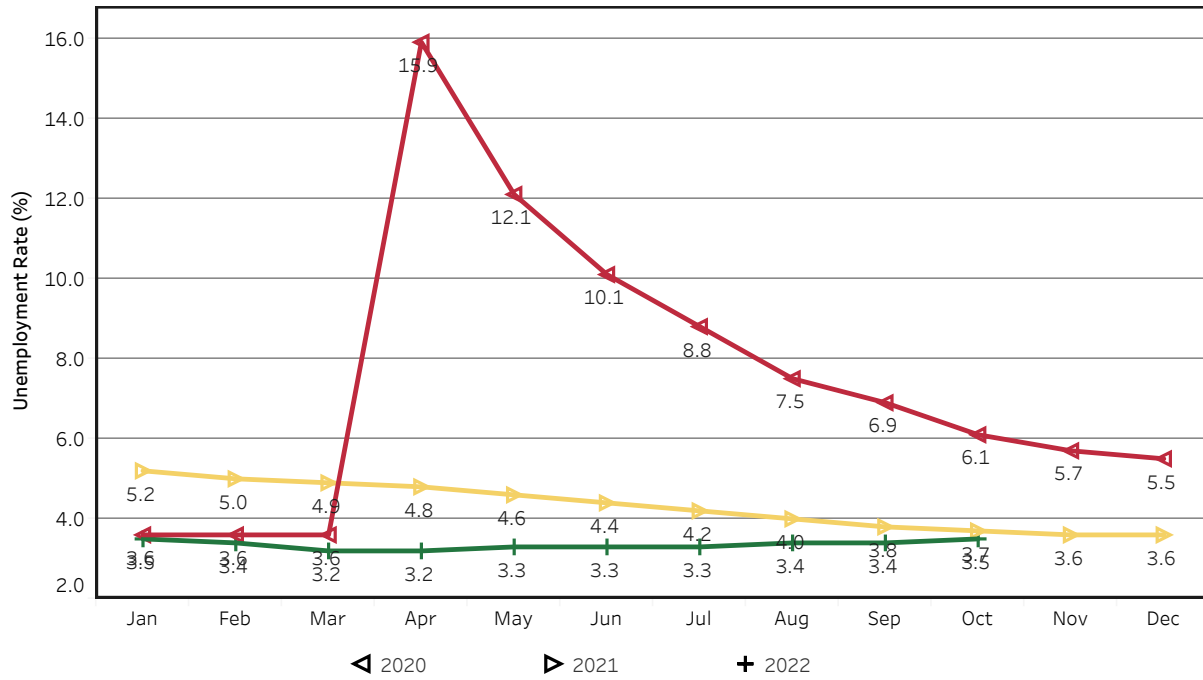
	Average Weekly Earning			Average Weekly Hours			Average Hourly Earning		
	October 2021	September 2022	October 2022	October 2021	September 2022	October 2022	October 2021	September 2022	October 2022
Manufacturing	\$923.90	\$907.41	\$927.63	42.4	40.6	41.1	\$21.79	\$22.35	\$22.57
Durable Goods	990.87	959.14	976.87	43.1	41.2	41.8	22.99	23.28	23.37
Non-Durable Goods	810.82	817.74	844.40	41.2	39.6	40.0	19.68	20.65	21.11

HOURS AND EARNINGS OF PRODUCTION WORKERS - ALL MANUFACTURING

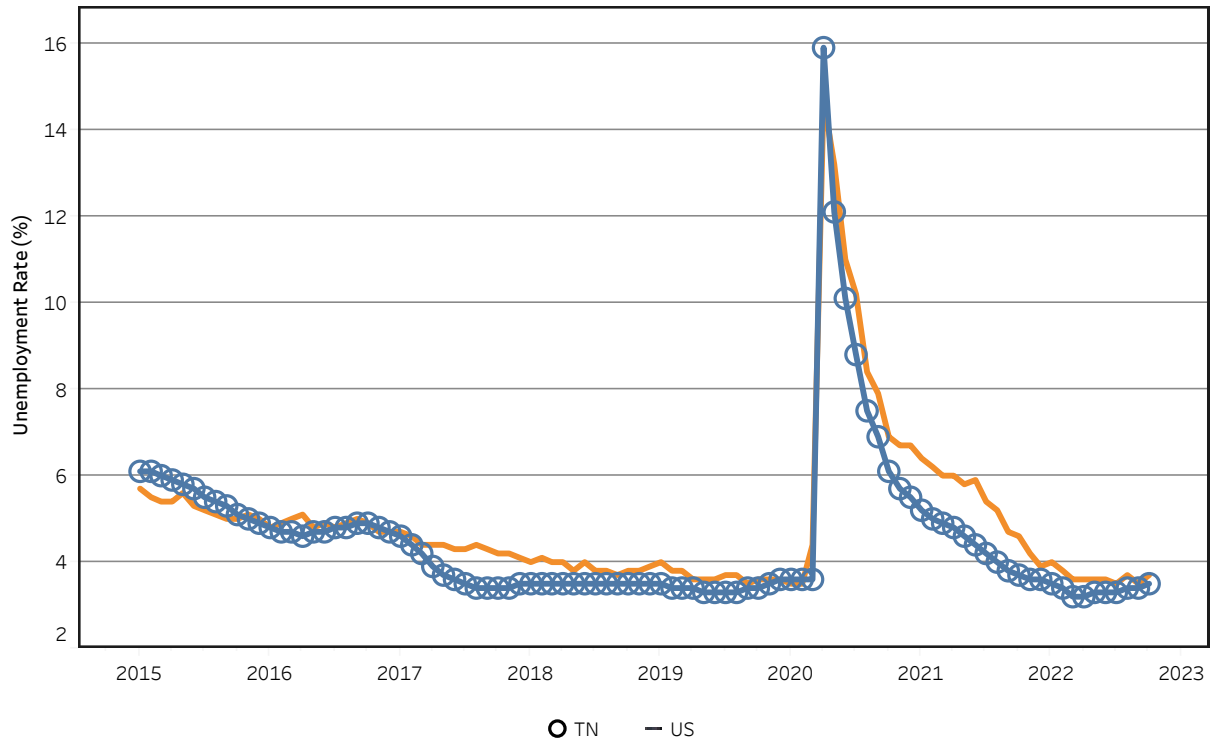
(ranked September 2022 preliminary average weekly earnings; October 2022 will be available later this month)

	Average Weekly Earning			Average Weekly Hours			Average Hourly Earning		
	September 2021	September 2022	Percent Change	September 2021	September 2022	Percent Change	September 2021	September 2022	Percent Change
FLORIDA	\$1035.5	\$1125.07	8.6%	40.80	41.50	1.7%	\$25.38	\$27.11	6.8%
KENTUCKY	\$978.52	\$1009.40	3.2%	39.60	41.20	4.0%	\$24.71	\$24.50	-0.8%
GEORGIA	\$965.71	\$981.20	1.6%	42.30	41.70	-1.4%	\$22.83	\$23.53	3.1%
ALABAMA	\$934.34	\$974.79	4.3%	41.60	41.20	-1.0%	\$22.46	\$23.66	5.3%
SOUTH CAROLINA	\$997.53	\$972.83	-2.5%	41.00	40.10	-2.2%	\$24.33	\$24.26	-0.3%
VIRGINIA	\$864.00	\$970.08	12.3%	41.30	43.00	4.1%	\$20.92	\$22.56	7.8%
TENNESSEE	\$922.41	\$912.89	-1.0%	42.10	40.90	-2.9%	\$21.91	\$22.32	1.9%
NORTH CAROLINA	\$858.39	\$888.58	3.5%	42.60	41.60	-2.3%	\$20.15	\$21.36	6.0%
MISSISSIPPI	\$799.89	\$850.92	6.4%	39.00	40.10	2.8%	\$20.51	\$21.22	3.5%
ARKANSAS	\$821.34	\$810.76	-1.3%	40.60	39.30	-3.2%	\$20.23	\$20.63	2.0%

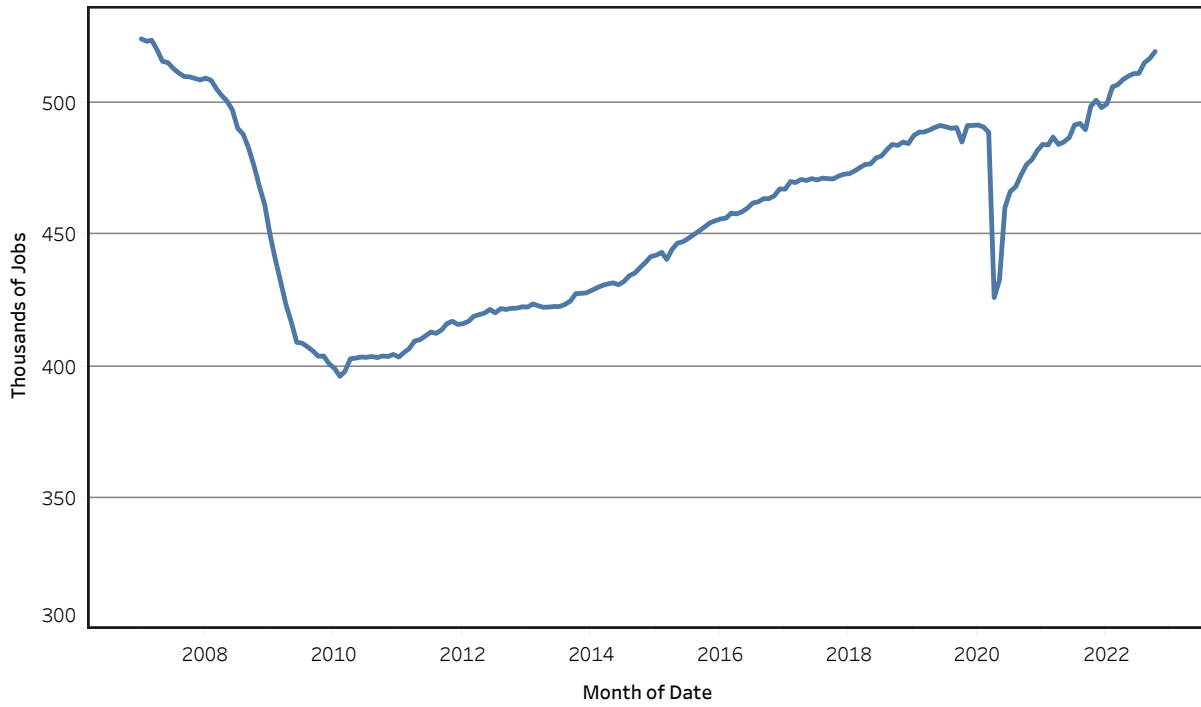
Unemployment Rates - Tennessee Seasonally Adjusted - 2020 to 2022



Unemployment Rates - US & Tennessee Seasonally Adjusted - January 2015 to October 2022



Goods - Producing Jobs in Tennessee Seasonally Adjusted - Jan 2007 to Oct 2022



Service - Providing Jobs in Tennessee Seasonally Adjusted - Jan 2007 to Oct 2022

