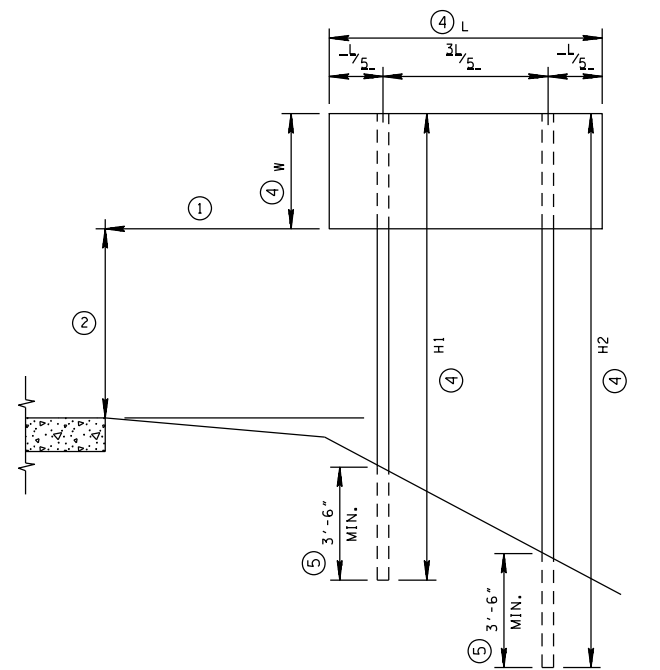
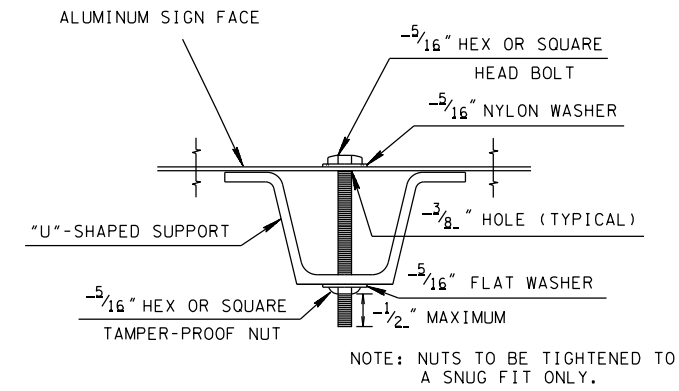


SHOULDER INSTALLATION FOR ONE "U" POST SUPPORT



SHOULDER INSTALLATION FOR TWO "U" POST SUPPORTS

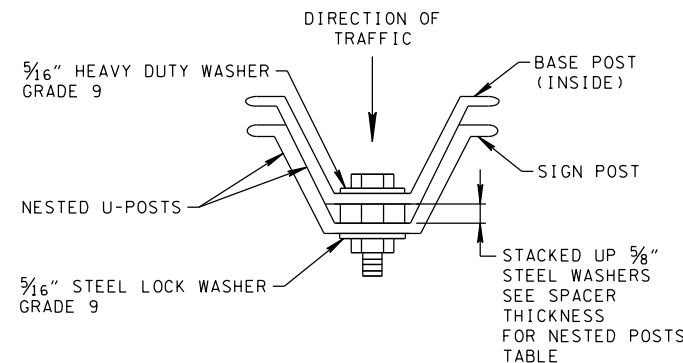


CONNECTION DETAIL FOR "U" POST

SINGLE-DIRECTIONAL BREAKAWAY LAP SPLICE[Ⓡ]

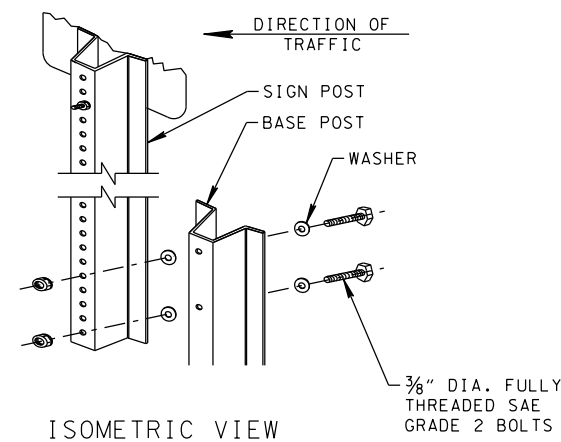
LEGEND	
W	HEIGHT OF SIGN FACE
L	LENGTH OF SIGN FACE
H	HEIGHT OF SIGN SUPPORT

FOOTNOTES	
①	FOR STANDARDIZATION OF LOCATION AND LATERAL CLEARANCE SEE SUBSECTIONS 2A-16 AND 2A-19 OF THE CURRENT EDITION OF THE MANUAL ON UNIFORM TRAFFIC CONTROL DEVICES.
②	FOR HEIGHT SEE SUBSECTION 2A-18 OF THE CURRENT EDITION OF THE MANUAL ON UNIFORM TRAFFIC CONTROL DEVICES.
③	FOR LATERAL CLEARANCE OF CROSSBUCK SIGN SEE SUBSECTION 2A-19 OF THE CURRENT EDITION OF THE MANUAL ON UNIFORM TRAFFIC CONTROL DEVICES.
④	SEE SIGN SCHEDULE SHEET IN THE PLANS FOR DIMENSIONS L, H, H1, H2, H3 AND W.
⑤	IF ROCK IS ENCOUNTERED DURING THE INSTALLATION OF SUPPORT POSTS, THE HOLES FOR THE SUPPORTS SHALL BE DRILLED TO PROVIDE THE MINIMUM 3'-6" DEPTH IN GROUND.
⑥	SEE TDOT SPECIAL PROVISION 713A REGARDING SPECIFICATIONS FOR HIGH GRADE REFLECTIVE SHEETING.
⑦	TO BE PAID FOR UNDER ITEM NO. 713-16.20 THRU 39.

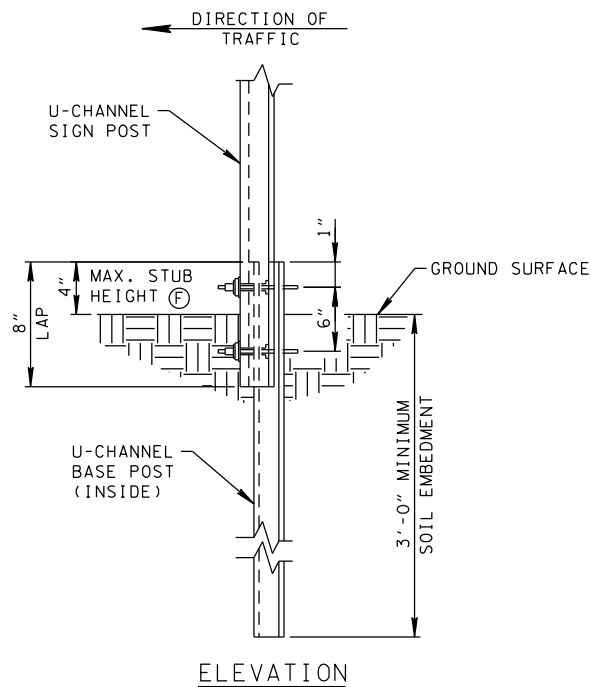


SECTION (THRU BREAKAWAY SPLICE)

SPACER THICKNESS FOR NESTED POSTS	
POST SIZE (LB/FT)	THICKNESS (INCHES)
2.00	3/8
2.50	5/16
2.75	1/4
3.00	3/8
4.00	1/2



ISOMETRIC VIEW



ELEVATION

- REV. 11-1-11: REVISED GENERAL NOTES (A) AND (D). ADDED GENERAL NOTE (E). CHANGED R-15-2 SIGNS TO R15-2P.
- REV. 6-5-14: COMBINED T-S-16 AND T-S-16A.
- REV. 7-2-15: ADDED SINGLE DIRECTIONAL BREAKAWAY LAP SPLICE. ADDED FOOTNOTES (5).
- REV. 7-1-72: CHANGED DEPARTMENT NAME.
- REV. 7-26-73: CORRECT VERTICAL AND LATERAL CLEARANCES AND RAILROAD CROSSBUCK SIGN TO AGREE WITH 1971 MUTCD. ELIMINATED USE OF WOOD POST SUPPORTS AND CHANGEABLE NUMERAL DETAIL.
- REV. 8-24-73: BREAKAWAY ADDED TO SQUARE TUBE POST DESCRIPTION. REFERENCE ARROWS ADDED FROM R15-2 TO THE APPROPRIATE SIGNS.
- REV. 2-21-74: PAY ITEM AND NOTE ADDED REGARDING RAILROAD CROSSBUCK SIGN AND SUPPORT.
- REV. 1-1-76: CHANGED DWG. NO. FROM RD-5-16 (68) TO T-S-16.
- REV. 3-15-76: DELETED REFERENCE TO OLD DWG. NO., SUBSTITUTED NEW DWG. NO.
- REV. 2-25-77: THE WORD "STEEL" ELIMINATED FROM U-POST.
- REV. 10-24-79: U-POST CONNECTION DETAIL REVISED.
- REV. 12-12-83: CONNECTION DETAIL U-POST CHANGED.
- REV. 5-28-84: CONNECTION DETAIL U-POST AND RAILROAD CROSSBUCK SIGN AND SUPPORT CHANGED.
- REV. 10-31-84: ADDED TAMPER PROOF NUT TO CONNECTION DETAIL U-POST.
- REV. 2-12-85: ADDED POP-RIVET ALTERNATE TO U-POST CONNECTION DETAIL.
- REV. 4-10-86: ADDED REFERENCE TO SECTION 2A-21 OF MUTCD.
- REV. 7-8-86: REDREW SHEET. DELETED POP-RIVET ALTERNATE. ADDED NOTES.
- REV. 10-15-90: REDREW AND REORGANIZED SHEET. CHANGED MINIMUM DEPTH OF "U" POST IN GROUND FROM 3'-0" TO 3'-6".
- REV. 1-16-91: ELIMINATED SHOULDER INSTALLATION USING THREE SUPPORTS.
- REV. 2-12-91: CORRECTED FOOTNOTE NUMBERS IN BOTH SHOULDER INSTALLATION DETAILS.
- REV. 7-29-92: CHANGED U7 POST TO P8 POST IN RAILROAD CROSSBUCK SIGN AND SUPPORT DETAIL.
- REV. 7-29-96: CHANGED MATERIAL ON CROSSBUCK AND TRACK NUMBER SIGN. ADDED WHITE RETROREFLECTIVE STRIP TO CROSSBUCK SUPPORT.
- REV. 1-19-99: ADDED FOOTNOTE (6).
- REV. 5-27-01: CHANGED DESCRIPTION IN ITEM NO. 713-16.05.
- REV. 7-29-04: IN RAILROAD CROSSBUCK SIGN AND SUPPORT DETAIL MOVED 18" DIMENSION LINE.
- REV. 10-23-06: ADDED GENERAL NOTE (D), (E) AND TRACK ID PLATE.
- REV. 11-1-11: ADDED RAILROAD ADVANCE WARNING SIGN DETAIL.

MINOR REVISION -- FHWA APPROVAL NOT REQUIRED.

**STATE OF TENNESSEE
DEPARTMENT OF TRANSPORTATION**

GROUND MOUNTED
ROADSIDE
SIGN PLACEMENT
DETAILS

T-S-16

0/14/2015 2:08:02 PM F:\backup d\pak on j196208\WORKSTD\2015 std dwg\T516_030415.DGN