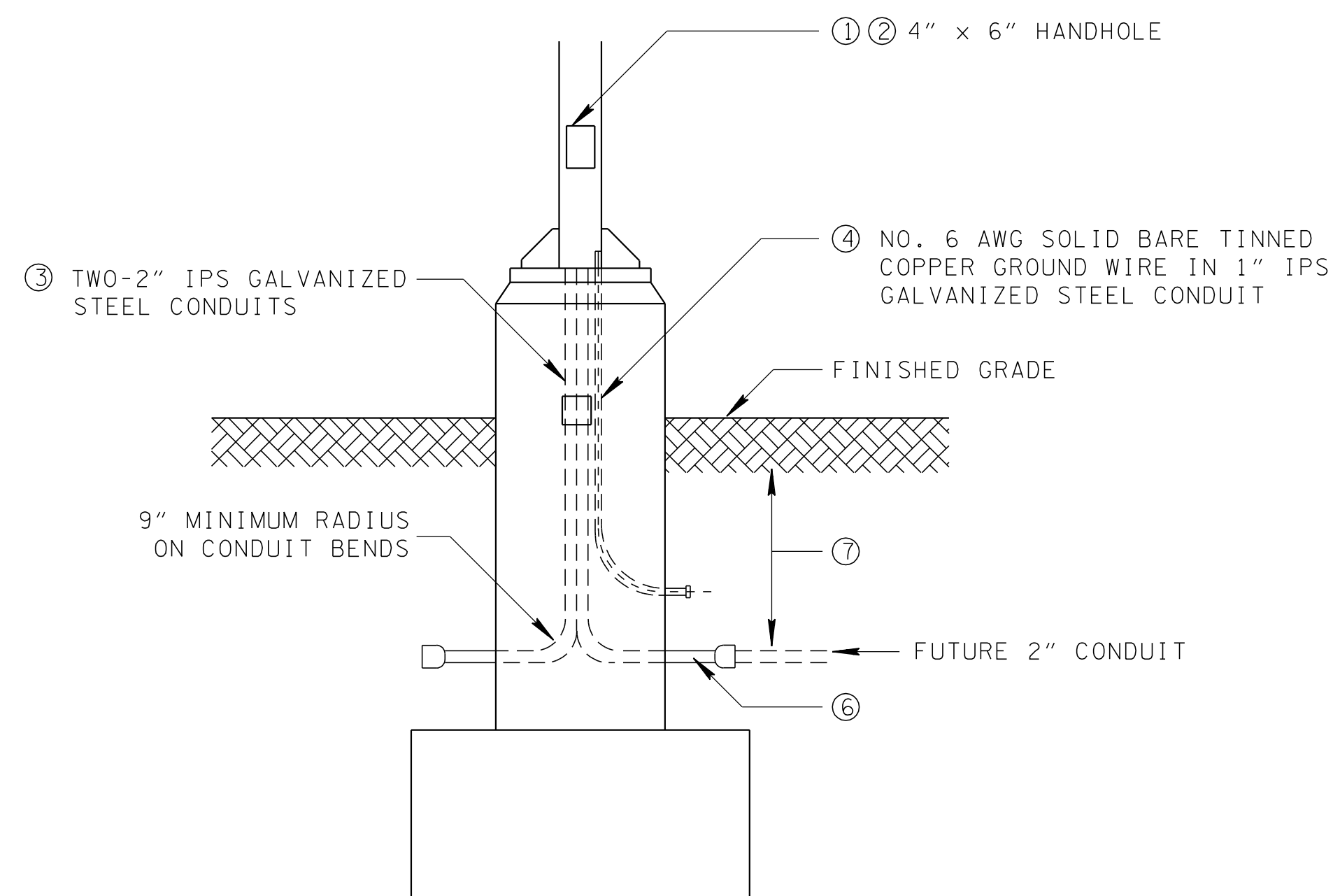


REV. 7-1-72: CHANGED DEPARTMENT NAME.

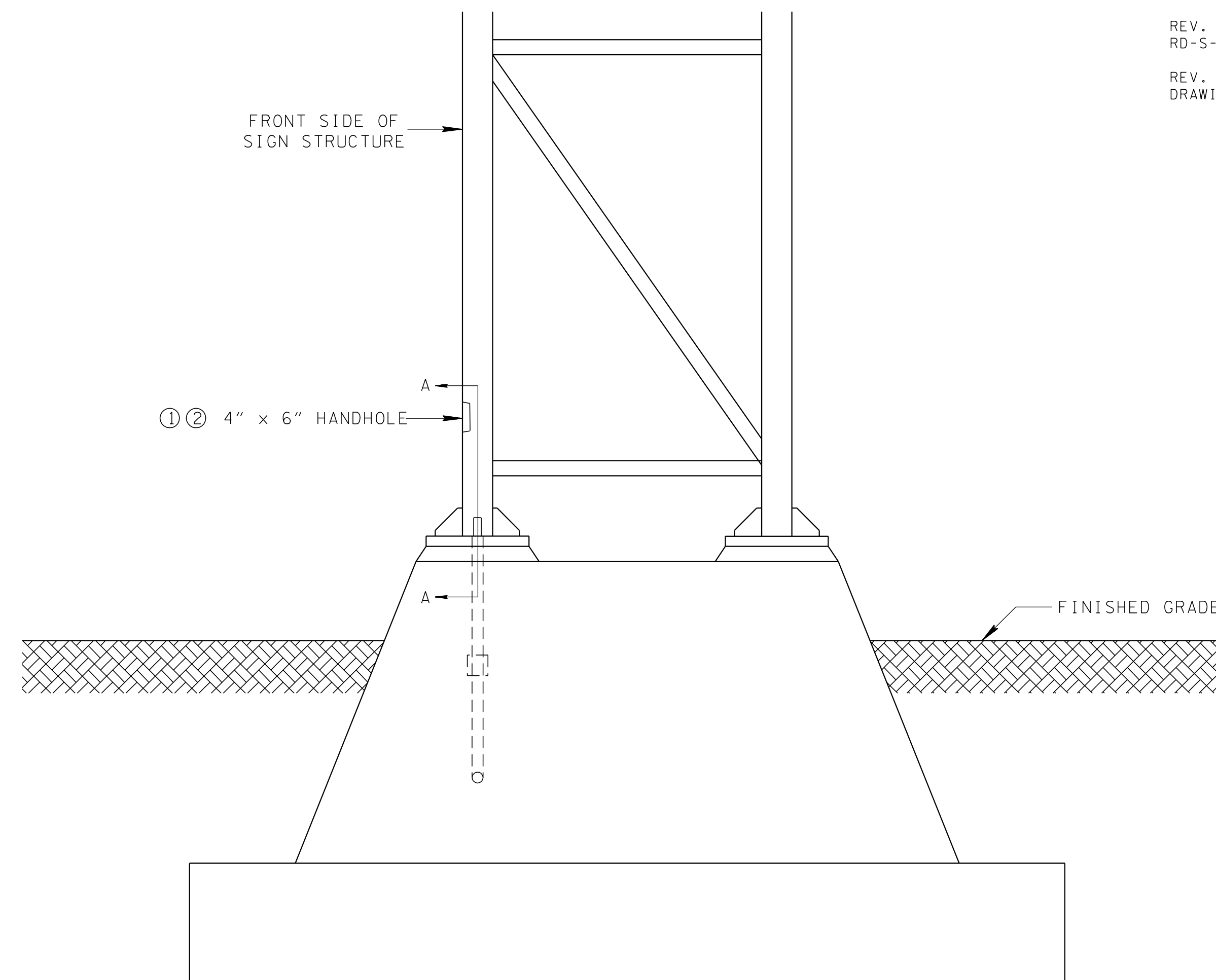
REV. 12-4-72: ADDED NOTE ⑤ AND CONDUIT TO DETAILS.

REV. 1-1-76: CHANGED DRAWING NO. FROM RD-S-15 TO T-S-15.

REV. 12-7-90: REDREW, REORGANIZED DRAWING AND RENAMED SHEET.

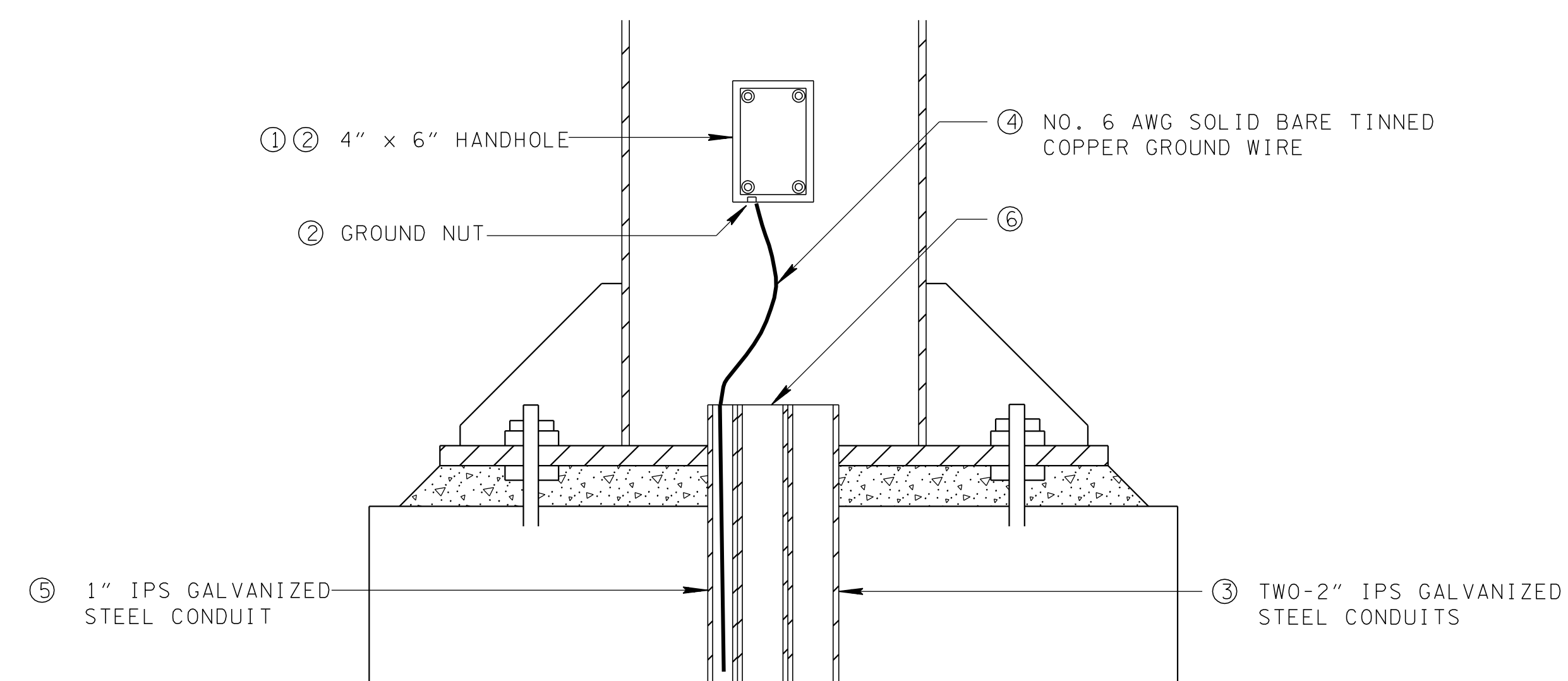


FRONTAL VIEW



SIDE VIEW

FOOTNOTES	
①	A 4" x 6" HANDHOLE WITH REINFORCED FRAME AND COVER LOCATED NOT MORE THAN 12 INCHES ABOVE THE ANCHOR BASE SHALL BE PROVIDED IN THE FRONT FACE OF THE FRONT POST MEMBER OF THE BUTTERFLY STRUCTURE AND IN THE FRONT POST MEMBER OF THE RIGHT HAND SUPPORT ON OVERHEAD SIGN STRUCTURES. STAINLESS STEEL ALLEN-HEAD SCREWS SHALL BE USED TO SECURE HANDHOLE COVER TO FRAME, AND NO SUBSTITUTIONS WILL BE ACCEPTED.
②	THE HANDHOLE FRAME SHALL BE DRILLED AND TAPPED TO ACCOMMODATE A 1/2" - 13NC GROUNDING STUD OR SHALL HAVE A 1/2" - 13NC NUT WELDED TO THE FRAME.
③	TWO - 2" IPS GALVANIZED STEEL CONDUITS SHALL BE INSTALLED IN EACH POST MEMBER HAVING A HANDHOLE. CONDUITS SHALL EXTEND 2 INCHES ABOVE TOP OF CONCRETE AND 12 INCHES MINIMUM INTO THE EARTH. BOTH ENDS SHALL BE THREADED AND CAPPED WITH GALVANIZED STEEL CONDUIT BUSHING AND PENNY.
④	ONE NO. 6 AWG SOLID BARE TINNED COPPER GROUND WIRE SHALL BE INSTALLED IN THE 1" IPS GALVANIZED STEEL CONDUIT AND CONNECTED TO THE GROUNDING NUT. TWO FEET OF EXCESS WIRE SHALL BE LEFT AT TOP OF CONCRETE AND IN EARTH.
⑤	ONE 1" IPS GALVANIZED STEEL CONDUIT SHALL BE INSTALLED IN THE RIGHT HAND SUPPORT FOUNDATION FOR THE GROUND WIRE.
⑥	THE 2" IPS GALVANIZED STEEL CONDUITS ARE TO BE THREADED AND CAPPED FOR FUTURE USE IN LIGHTING SIGNS.
⑦	DEPTH TO BE A MINIMUM OF TWO FEET AND MAXIMUM OF THREE FEET.



SECTION A-A

(SECTIONAL VIEW OF OVERHEAD OR CANTILEVER SIGNS)

STATE OF TENNESSEE
DEPARTMENT OF TRANSPORTATION

STANDARD CONDUIT &
GROUND DETAILS FOR
OVERHEAD & CANTILEVER
SIGN STRUCTURES

T-S-15