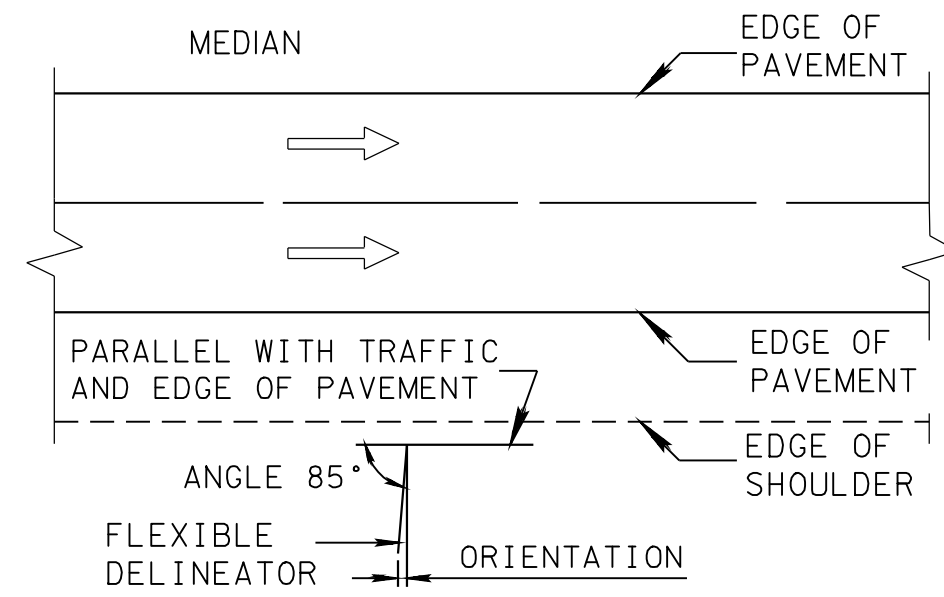
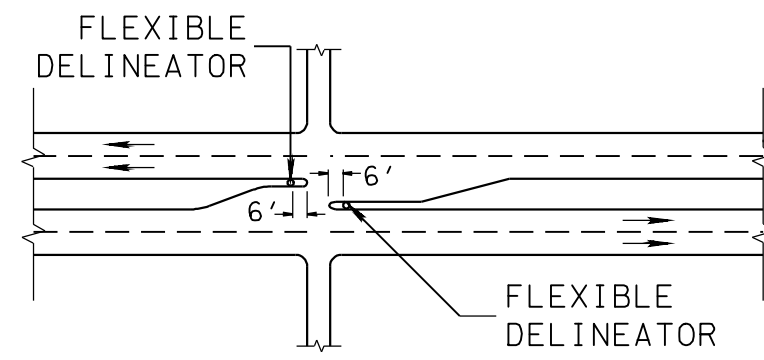
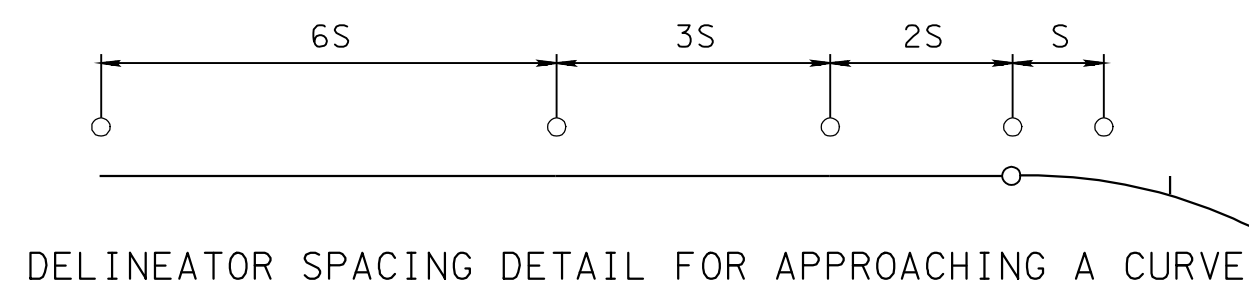


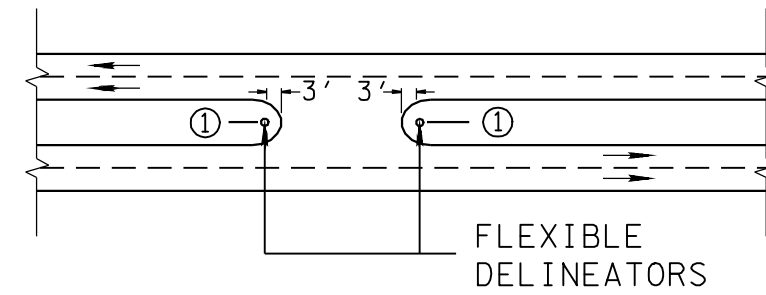
FLEXIBLE DELINEATOR MOUNTING DETAIL



ANGLE OF FLEXIBLE DELINEATOR TO APPROACHING TRAFFIC DETAIL



INTERSECTING ROADWAY WITH MEDIAN DETAIL  
DELINEATOR LOCATION FOR



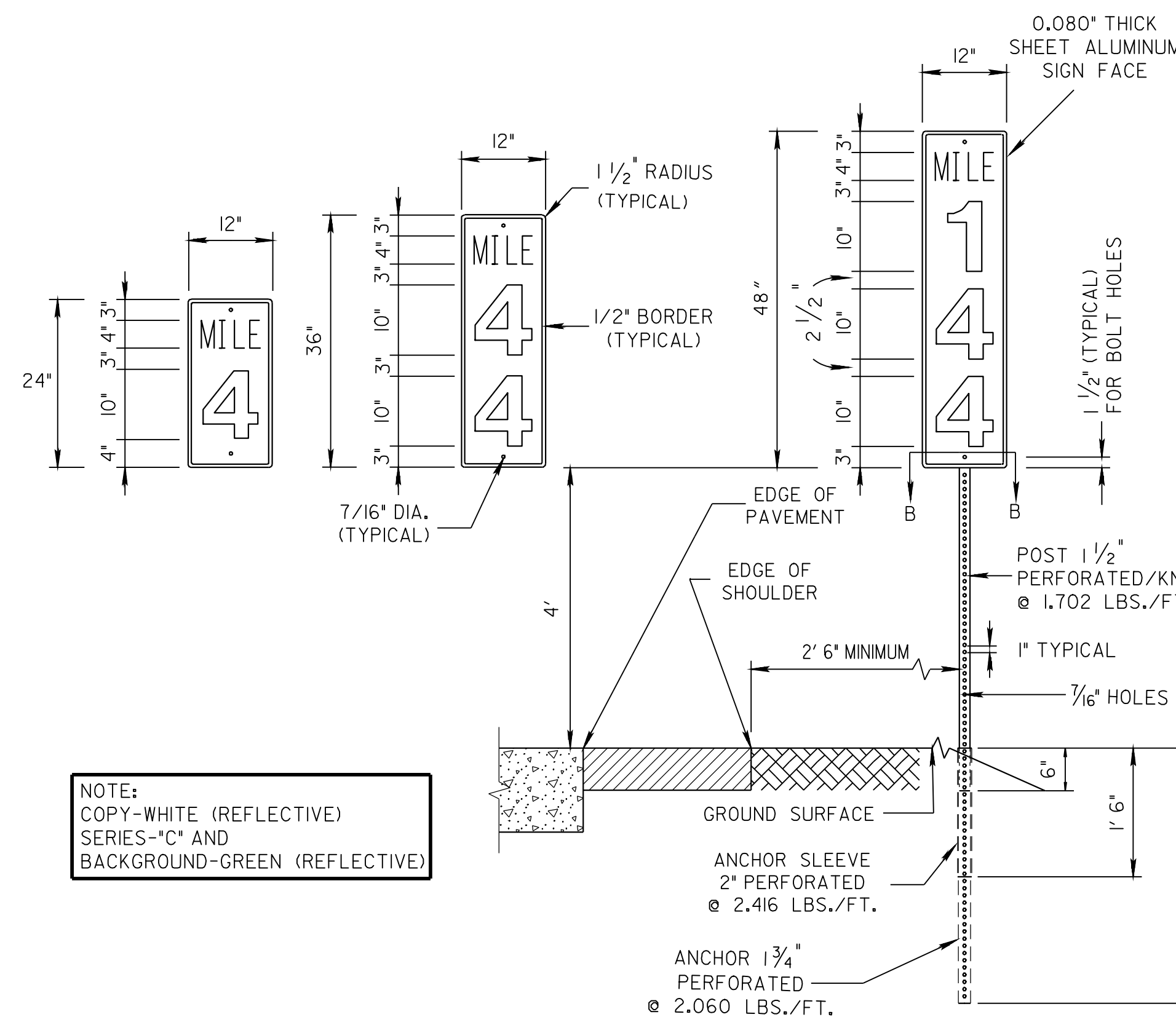
DELINEATOR LOCATION FOR MEDIAN CROSS-OVER DETAIL

(WHITE REFLECTIVE SHEETING ON NEAR SIDE APPROACH FACE AND YELLOW REFLECTIVE SHEETING ON FAR SIDE APPROACH FACE BOTH CASES.)

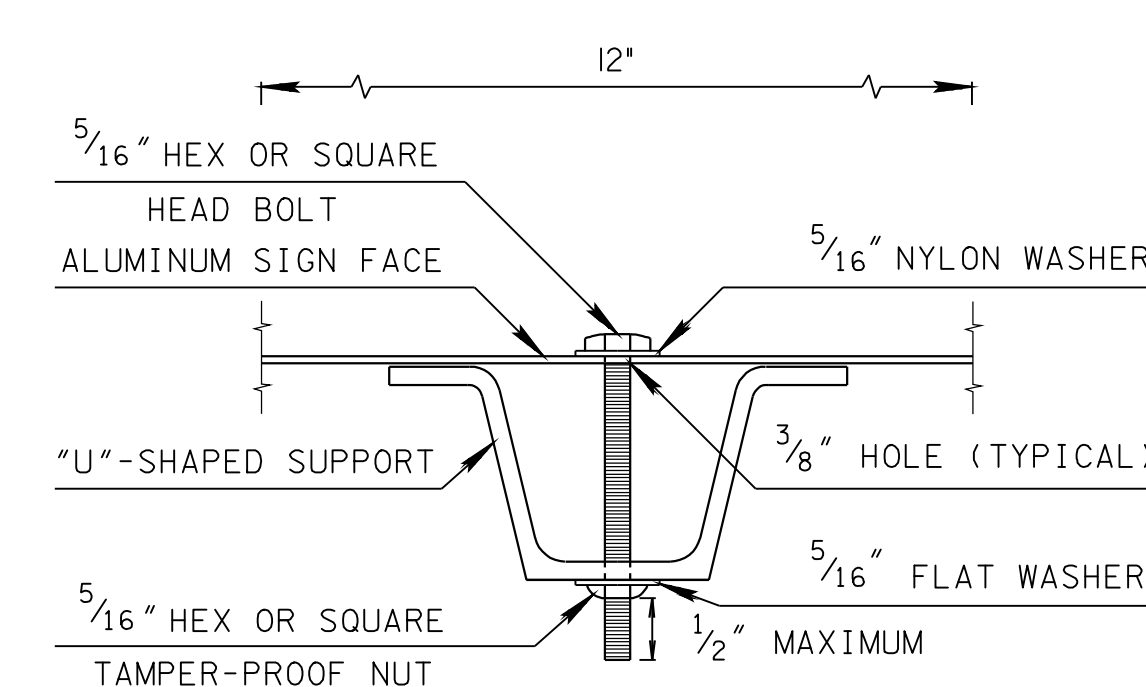
① DELINEATOR TO BE PLACED IN CENTER OF MEDIAN

RADIUS IN FEET	SPACING ON CURVE IN FEET	RADIUS IN FEET	SPACING ON CURVE IN FEET	RADIUS IN FEET	SPACING ON CURVE IN FEET
50	20	1700	125	3500	215
150	30	1800	130	3600	220
200	35	1900	135	3700	225
250	40	2000	140	3800	230
300	50	2100	145	3900	235
400	55	2200	150	4000	240
500	65	2300	155	4100	245
600	70	2400	160	4200	250
700	75	2500	165	4300	255
800	80	2600	170	4400	260
900	85	2700	175	4500	265
1000	90	2800	180	4600	270
1100	95	2900	185	4700	275
1200	100	3000	190	4800	280
1300	105	3100	195	4900	285
1400	110	3200	200	5000	290
1500	115	3300	205	5100	295
1600	120	3400	210	5200	300

IF RADIUS IS MORE THAN 5200 FEET, USE SPACING OF 300 FEET. DISTANCE S IN BELOW DETAIL IS THE SAME AS SPACING ON CURVE IN TABLE. DESIGNATION 6S, 3S, 2S, AND S ARE TO NEVER EXCEED 300 FEET. AFTER SPACING DESIGNATION OF 6S ON BEGINNING OR END OF CURVE RESUME 528 FEET SPACING AS USED ON TANGENTS.



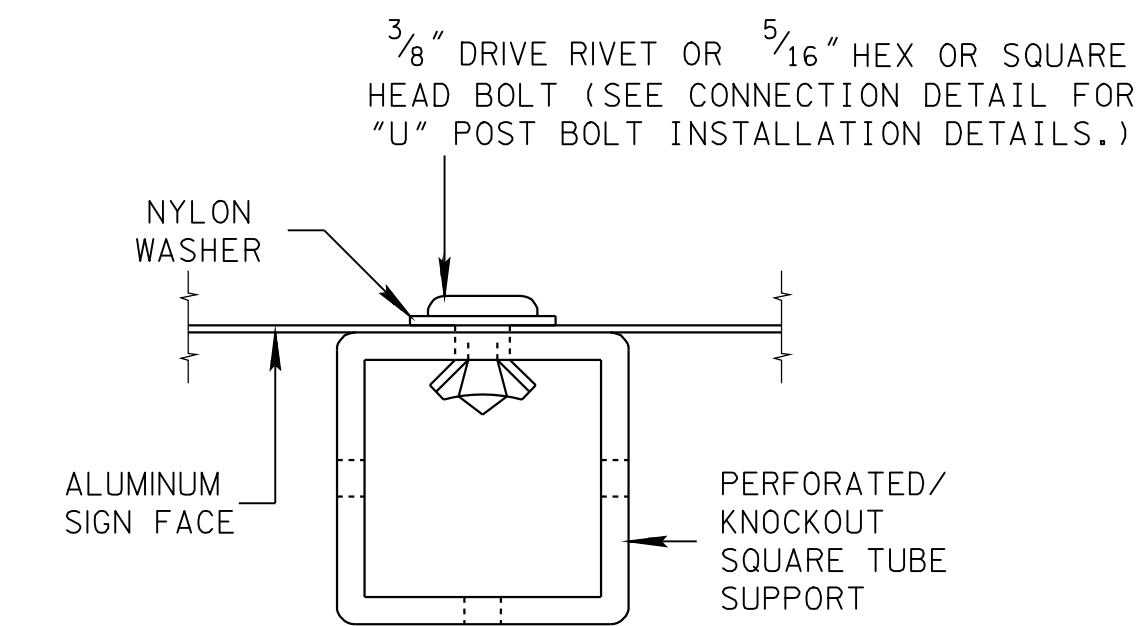
MILEPOST SIGN DETAILS (INTERSTATE ONLY)



CONNECTION DETAIL FOR "U" POST

GALVANIZED STEEL POST WITH WEIGHT OF 2 LBS./FT. MUST BE PLACED A MINIMUM DEPTH BELOW GROUND OF 3'6".

SECTION B-B



CONNECTION DETAIL FOR PERFORATED/KNOCKOUT SQUARE TUBE POST

GALVANIZED PERFORATED/KNOCKOUT SQUARE TUBE POST WITH WEIGHT OF 1.702 LBS./FT. MUST BE PLACED A MINIMUM DEPTH BELOW GROUND OF 3'.

SECTION B-B

FLEXIBLE DELINEATOR GENERAL NOTES	
①	THE COLOR OF DELINEATORS SHALL CONFORM TO THE COLOR OF EDGE LINES STIPULATED IN SUBSECTION 3B-6 (PAGE 3B-8 AND 3B-11) OF THE CURRENT EDITION OF THE MANUAL ON UNIFORM TRAFFIC CONTROL DEVICES.
②	THE WHITE REFLECTOR UNIT SHALL BE PLACED CONTINUOUSLY ON ALL EXPRESSWAYS AND FREEWAYS, EXCEPT ON THOSE SECTIONS BETWEEN INTERCHANGES WHERE FIXED LIGHTING IS INSTALLED AND IN OPERATION.
③	DELINEATORS ARE TO BE INSTALLED ON ALL ROADWAYS WITHIN INTERCHANGES (LIGHTED OR NOT).
④	THE DELINEATORS SHALL BE PLACED ALONG THE RIGHT SIDE OF THE THROUGH EXPRESSWAYS AND FREEWAYS, TWO FEET BEYOND THE OUTER EDGE OF THE ROADWAY SHOULDER OR THE FACE OF AN UNMOUNTABLE CURB, OR IN THE LINE OF THE GUARDRAIL.
⑤	AT INTERCHANGES, DELINEATORS SHALL BE LOCATED ALONG THE OUTSIDE OF THE CURVE OF TURNING RAMPS, ON THE LEFT SIDE FOR RIGHT CURVING RAMPS AND ON THE RIGHT FOR OTHERS.
⑥	ALONG THE THROUGH ROADWAYS, THE WHITE DELINEATORS SHALL BE SPACED AT 528 FEET ON TANGENTS. ON HORIZONTAL CURVES THE SPACING SHOULD BE ACCORDING TO THE HORIZONTAL CURVE TABLE ON THIS SHEET. THE RAMP DELINEATORS AT INTERCHANGES SHALL BE SPACED AT A MAXIMUM OF 100 FEET. THE TABLE AT LEFT SHOULD BE USED AS A GUIDE.
⑦	SEE TDOT STANDARD SPECIFICATION 916.08 REGARDING SPECIFICATIONS FOR FLEXIBLE DELINEATOR POST AND HIGH GRADE REFLECTIVE SHEETING BONDED TO THEIR SURFACE AREA.
⑧	PAYMENT FOR FLEXIBLE DELINEATORS IN PLACE WILL BE MADE AS FOLLOWS: ITEM NUMBER 713-02.14, FLEXIBLE DELINEATOR (WHITE) PER EACH. ITEM NUMBER 713-02.15, FLEXIBLE DELINEATOR (YELLOW) PER EACH. ITEM NUMBER 713-02.16, FLEXIBLE TYPE II OBJECT MARKER PER EACH.
⑨	ONLY FLEXIBLE DELINEATORS LISTED ON THE OPL, LIST 1, SECTION G, MAY BE USED.

MILEPOST SIGN GENERAL NOTES	
①	PAYMENT FOR MILEPOST IN PLACE WILL BE MADE UNDER ITEM NUMBER 713-02.04, DELINEATOR (MILE MARKER) AND STEEL POST PER EACH.
②	THE SUPPORT SHALL BE EITHER "U"-CHANNEL OR PERFORATED/KNOCKOUT SQUARE TUBE.
③	PERFORATED/KNOCKOUT POSTS SHALL BE SQUARE TUBE FORMED FROM 0.105" USS GAGE ASTM A-446 COLD ROLLED CARBON STEEL. THE SQUARE TUBES SHALL BE WELDED DIRECTLY IN THE CORNER BY HIGH FREQUENCY RESISTANCE WELDING OR EQUAL. THE POSTS TO BE EXTERNALLY SCARFED TO AGREE WITH STANDARD CORNER RADII OF 5/32±1/64.
④	PERFORATED/KNOCKOUT POSTS SHALL BE GALVANIZED TO CONFORM TO ASTM A-525.
⑤	ALL HARDWARE SHALL CONFORM TO THE REQUIREMENTS OF ASTM A-307, CLASS A.
⑥	ALL HARDWARE SHALL BE GALVANIZED TO CONFORM TO THE REQUIREMENTS OF ASTM A-153 OR CADMIUM PLATED TO CONFORM TO THE REQUIREMENTS OF ASTM A-165.

- REV. 2-12-85: REDREW SHEET, CHANGED FROM STEEL POST DELINEATOR TO FLEXIBLE DELINEATORS. CHANGED ITEM NUMBER OF WRONG WAY ARROW.
- REV. 3-29-85: CHANGED ITEM NUMBERS OF FLEXIBLE DELINEATORS.
- REV. 6-7-85: CHANGED ITEM DESCRIPTION ON WRONG WAY PAVEMENT ARROW DETAILS NOTE.
- REV. 2-13-86: CHANGED DESCRIPTION OF PAY ITEMS FOR FLEXIBLE DELINEATORS.
- REV. 9-4-87: DETAILS REGARDING DELINEATORS LOCATED IN MEDIAN ADDED. TYPE B POST ADDED.
- REV. 5-24-88: CHANGED SECTION ON TYPE "A" POST FLEXIBLE DELINEATOR.
- REV. 10-26-90: REDREW, REORGANIZED AND CHANGED NAME OF DRAWING. CHANGED MINIMUM DEPTH OF "U"-POST IN GROUND FROM 3' TO 3'6".
- REV. 12-7-90: CHANGED CONNECTION DETAIL FOR PERFORATED/KNOCKOUT SQUARE TUBE POST.
- REV. 12-18-93: REMOVED REFERENCE TO TYPE A AND TYPE B DELINEATOR POST, AS WELL AS SECTION "A-A" FOR TYPE A DELINEATOR POST. ELIMINATED OLD GENERAL NOTE (D7).
- REV. 4-30-00: ADDED NEW GENERAL NOTE (D7). CHANGED DESIGNATION OF OLD GENERAL NOTE (D7) TO (D8).
- REV. 12-12-00: MOVED WRONG WAY PAVEMENT ARROW DETAILS TO STD. DWG. NO. T-M-9. CHANGED DRAWING NAME.
- REV. 5-27-01: CHANGED DESCRIPTIONS FOR ITEM NOS. 713-02.14, 713-02.15 AND 713-02.16.
- REV. 6-6-11: REORGANIZED SHEET AND ADDED GENERAL NOTE (D9).

MINOR REVISION -- FHWA APPROVAL NOT REQUIRED.

STATE OF TENNESSEE  
DEPARTMENT OF TRANSPORTATION

DELINEATOR AND MILEPOST DETAILS

22-FEB-2012 08:59 \\J009083\F03.tdot.state.tn.us\3SHARED\StandDr-aw\STANDARD DRAWINGS\2012-MARCH DISTRIBUTION\tsll\_06061.dgn