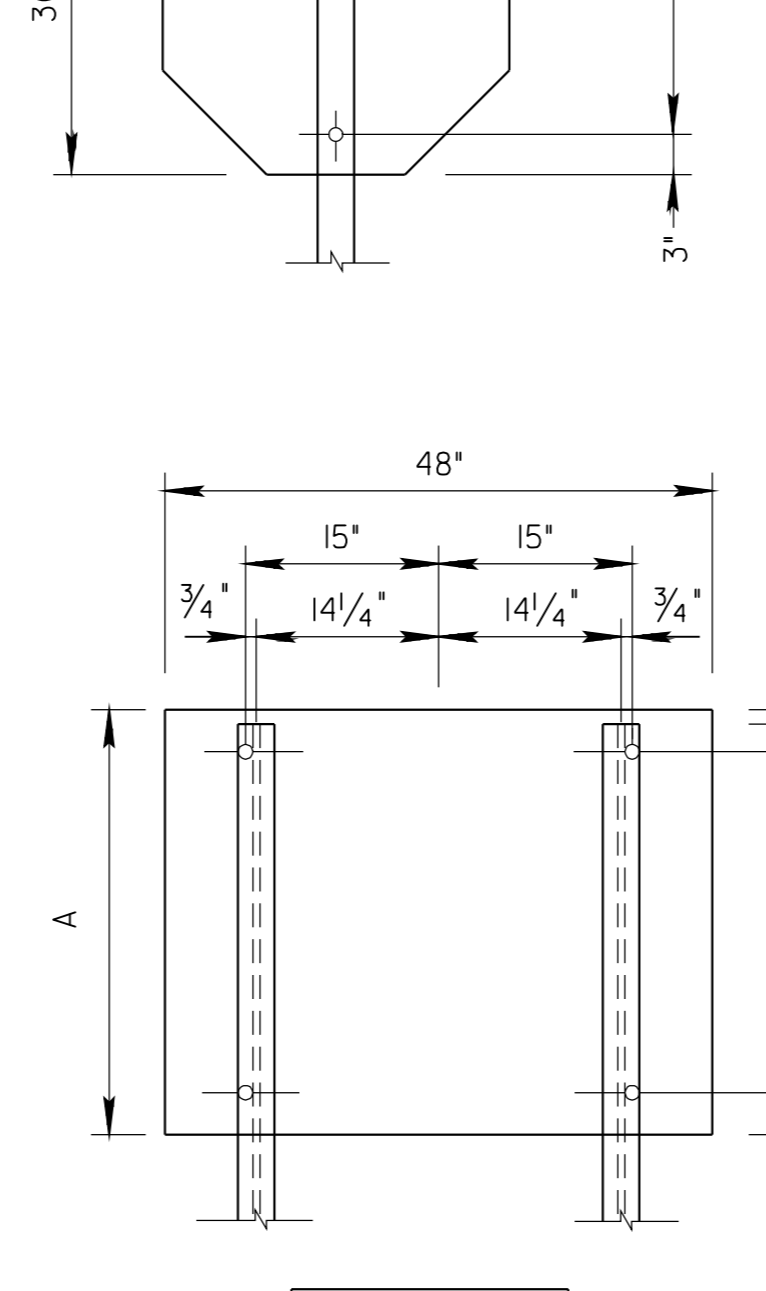
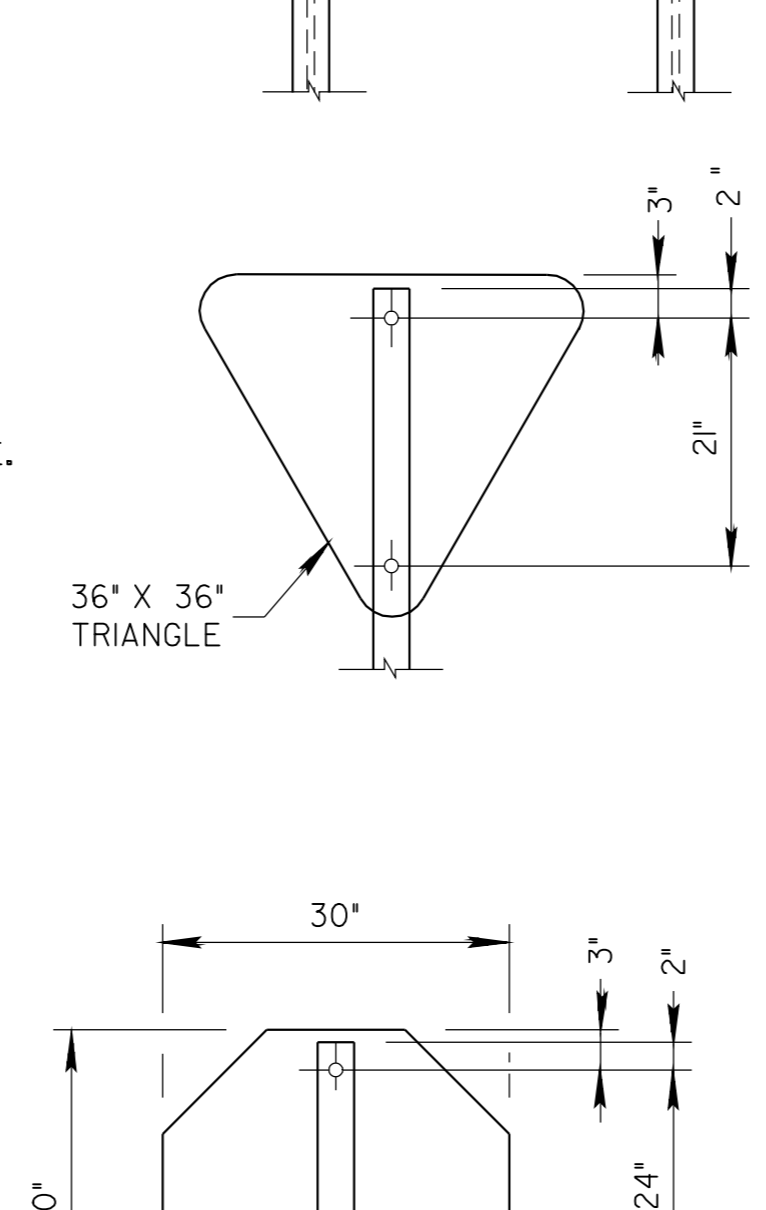
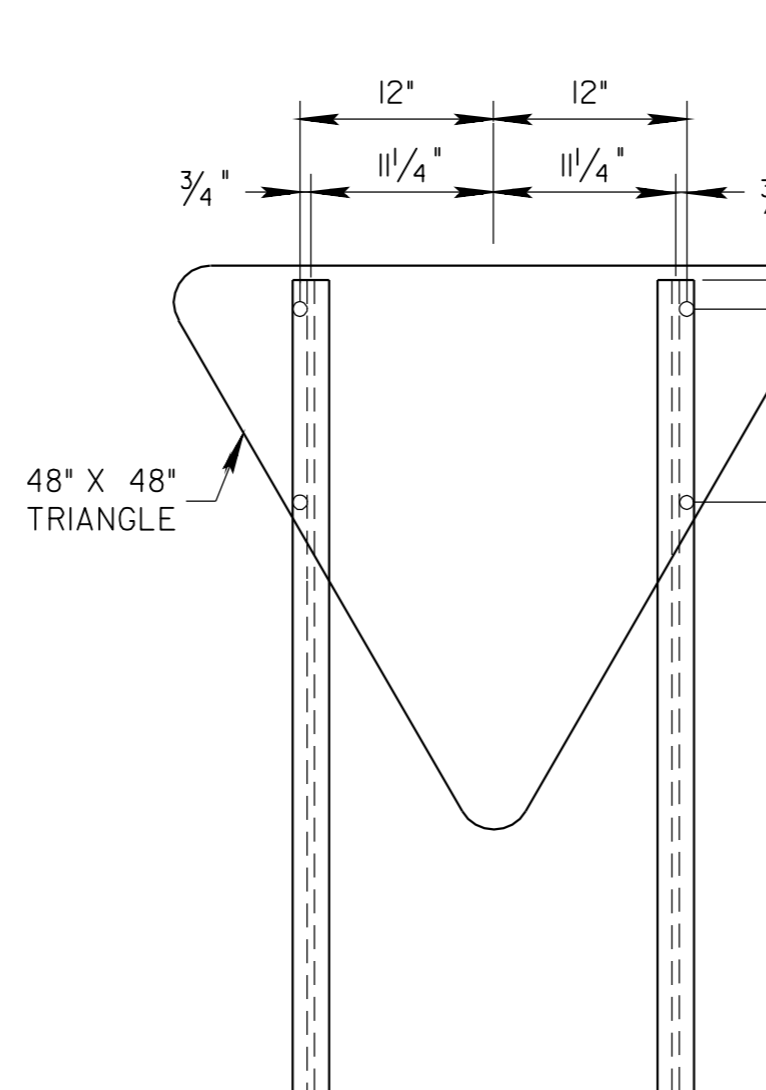
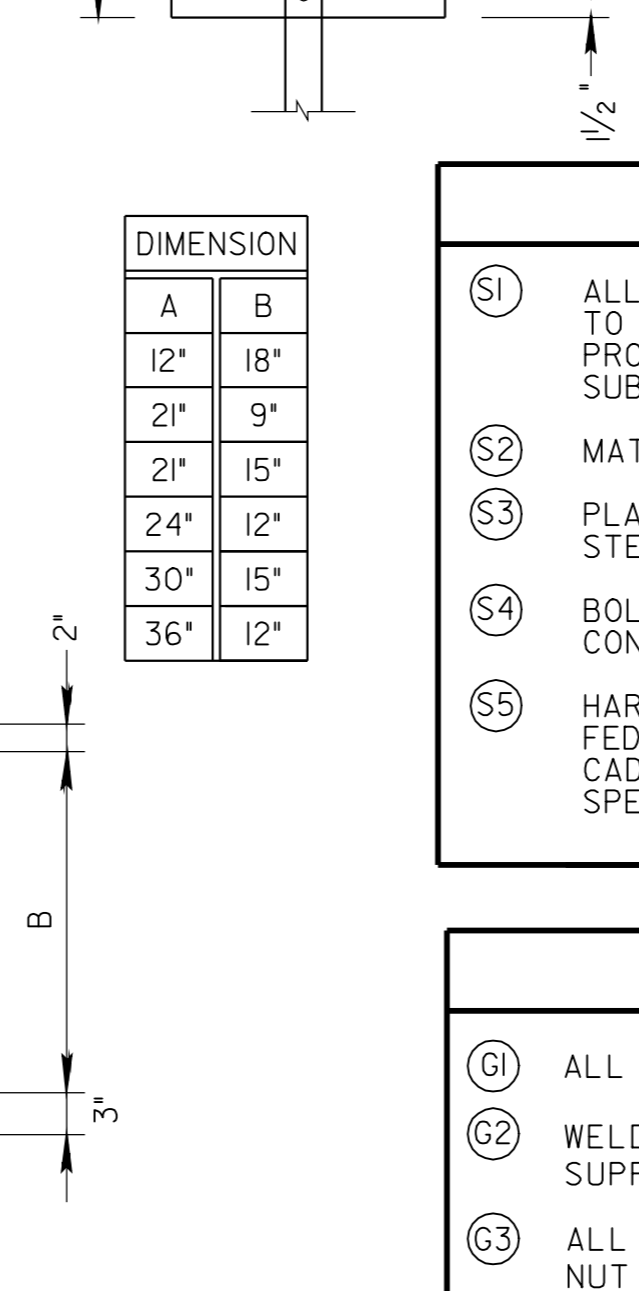
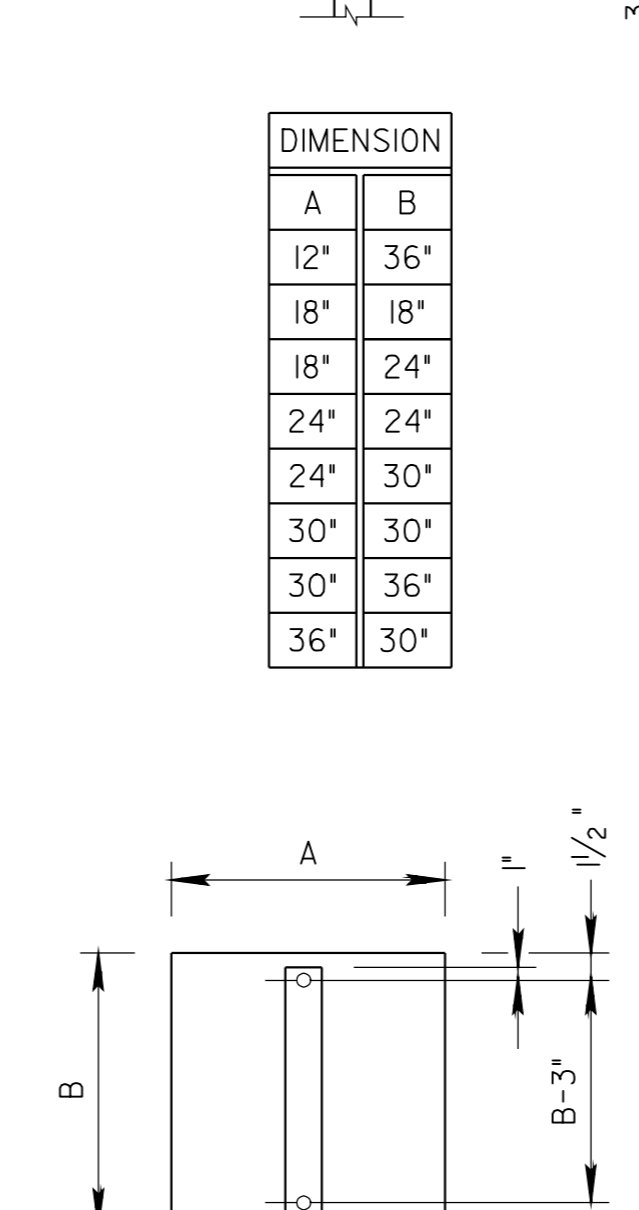
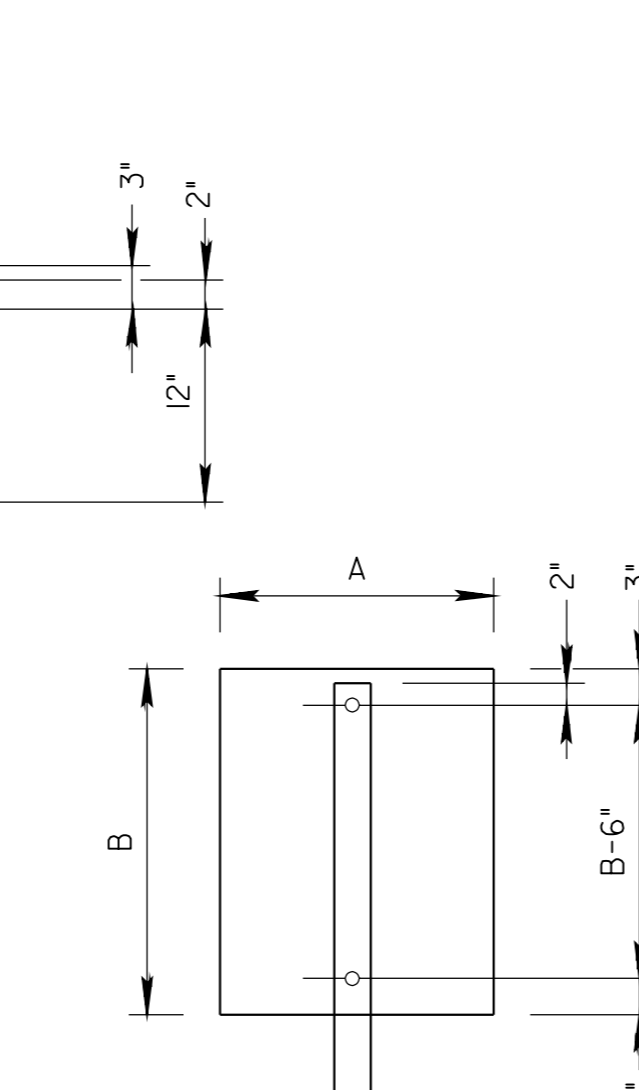


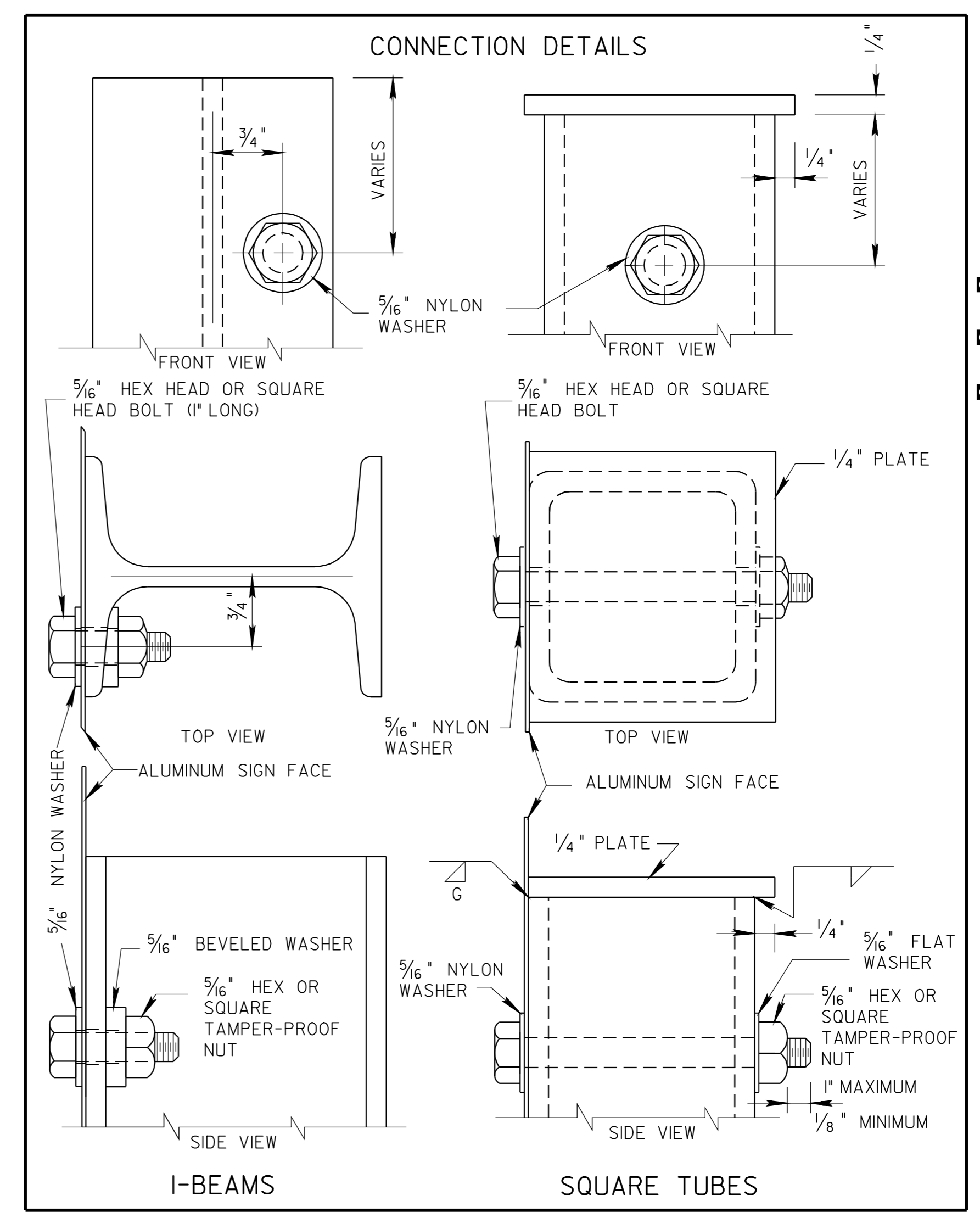
DIMENSION	
A	B
60"	18"
78"	24"
96"	22 1/2"



DIMENSION		
A	B	C
24"	18"	3"
36"	24"	6"



DIMENSION	
A	B
12"	18"
21"	9"
21"	15"
24"	12"
30"	15"
36"	12"



DIMENSION	
A	B
12"	36"
18"	18"
24"	24"
24"	30"
30"	30"
30"	36"
36"	30"

STEEL MATERIAL NOTES

(S1) ALL STEEL SHALL BE GALVANIZED AFTER FABRICATION CONFORMING TO THE REQUIREMENTS OF ASTM A123 OR THE ELECTRO-GALVANIZED PROCESS. DAMAGE TO THE COATING SHALL BE REPAIRED SUBSEQUENT TO ERECTION.

(S2) MATERIAL FOR TUBES SHALL BE ASTM A500, GRADE B.

(S3) PLATES SHALL BE IN ACCORDANCE WITH ASTM A36 OR ASTM A242 STEEL.

(S4) BOLTS, NUTS AND WASHERS SHALL BE MADE OF MATERIAL CONFORMING TO ASTM A307.

(S5) HARDWARE SHALL BE GALVANIZED CONFORMING TO ASTM A153 OR FEDERAL SPECIFICATION QQ-Z-325-B, TYPE I, CLASS 3 OR CADMIUM PLATED TO CONFORM TO ASTM A-165 OR FEDERAL SPECIFICATION QQ-P-416, TYPE III, CLASS 3.

ALUMINUM MATERIAL NOTES

(A1) MATERIAL FOR TUBES SHALL BE ASTM B-221, ALLOY 6061-T6.

(A2) FLAT SHEETS AND PLATES SHALL BE IN ACCORDANCE WITH ASTM B-209, ALLOY 6061-T6 OR 5052-H38.

(A3) BOLTS SHALL BE MADE FROM MATERIAL CONFORMING TO ASTM B-211, ALLOY 2024-T4.

(A4) MATERIAL FOR NUTS TO BE ASTM B-211, ALLOY 6262-T9.

(A5) MATERIAL FOR WASHERS TO BE ASTM B-209, ALLOY ALCLAD 2024-T4.

(A6) MATERIAL FOR WELD FILLER WIRE TO BE ASTM B-285, ALLOY ER 5356, ER 5556 OR ER 5183.

(A7) ALL BOLTS AND NUTS SHALL HAVE AN ANODIC COATING OF 0.0002 INCH MINIMUM THICKNESS WITH DICHROMATE OR BOILING WATER SEAL.

GENERAL NOTES

(G1) ALL HOLES SHALL BE 3/8" IN DIAMETER.

(G2) WELDING SHALL BE DONE IN ACCORDANCE WITH ASSHTO STANDARD SPECIFICATION FOR STRUCTURAL SUPPORTS FOR HIGHWAY SIGNS, LUMINARIES AND TRAFFIC SIGNALS (CURRENT EDITION.)

(G3) ALL BOLTS AND NUTS SHALL BE COATED WITH A SUITABLE LUBRICANT. STAINLESS STEEL BOLTS, NUT AND WASHERS MAY BE SUBSTITUTED.

(G4) IF A RECTANGULAR SIGN WIDER THAN 48" MUST BE MOUNTED ON A SIGNAL POST, 3/16" X 3" STEEL PLATE SIGN STIFFENERS ARE REQUIRED. THE COST OF STIFFENERS SHALL BE INCLUDED IN THE COST OF THE SIGN.

(G5) STIFFENERS ARE TO BE PLACED AT A MAXIMUM SPACING OF 1'-0", NO FURTHER THAN 9" FROM THE TOP AND BOTTOM OF THE SIGN AND THE STIFFENERS SHALL EXTEND TO WITHIN 3" FROM THE LEFT AND RIGHT EDGE OF THE SIGN.

- REV. 6-11-71: NOTE ADDED TO GENERAL NOTES.
- REV. 7-1-72: CHANGED DEPARTMENT NAME.
- REV. 1-1-76: CHANGED DRAWING NO. FROM RD-S-12 TO T-S-12.
- REV. 7-29-76: GENERAL REVISIONS.
- REV. 4-12-77: ALUMINUM FLAT SHEETS AND PLATES.
- REV. 10-24-79: LOCKNUTS REQUIRED.
- REV. 12-12-83: CHANGED ROUND HEAD MACHINED SCREW TO HEX HEAD BOLT AND CORRECTED ALL DIMENSIONS AS NEEDED.
- REV. 12-7-90: REDREW AND REORGANIZED SHEET. CHANGED SHEET NO. FROM T-S-12 TO T-S-10.
- REV. 5-27-03: CORRECTED GENERAL NOTE (G2).
- REV. 2-21-12: ADDED GENERAL NOTES (G4) AND (G5).
- REV. 4-4-12: ADDED SIGN STIFFENER DETAIL.

MINOR REVISION -- FHWA APPROVAL NOT REQUIRED.

STATE OF TENNESSEE
DEPARTMENT OF TRANSPORTATION

STANDARD MOUNTING
DETAILS
FLAT SHEET SIGNS
ALUMINUM-STEEL
DESIGN