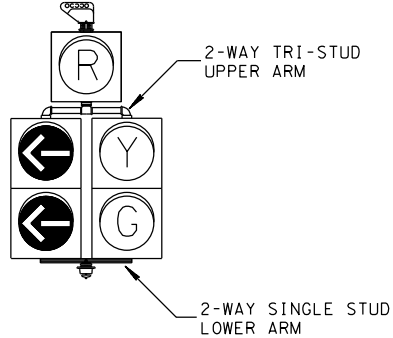
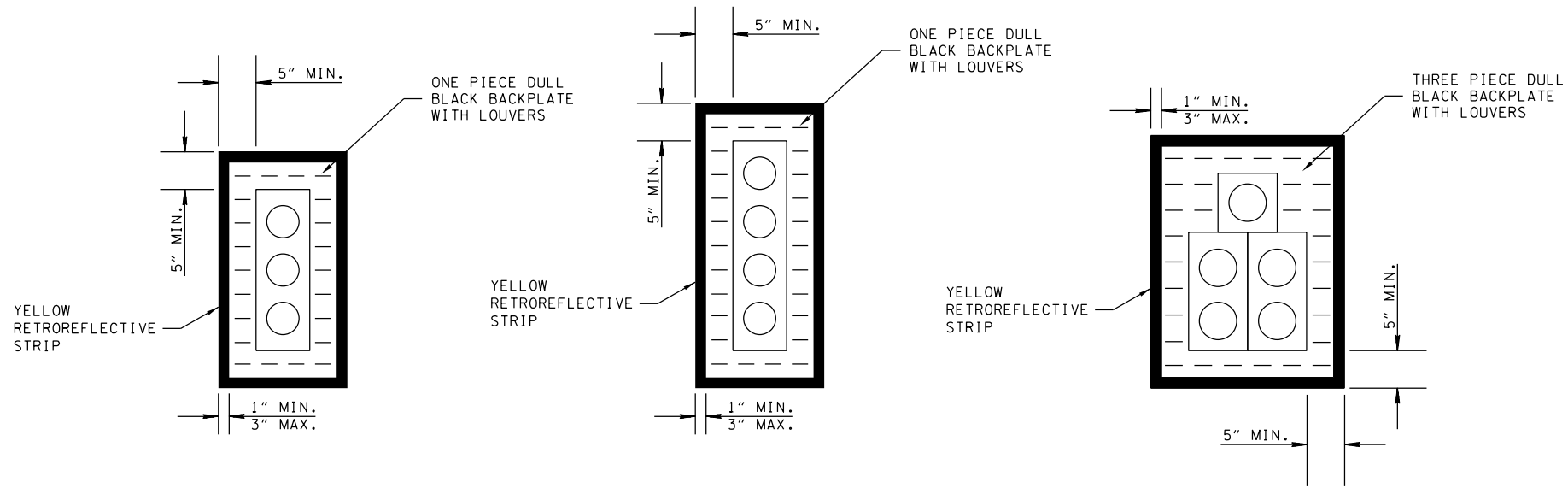


TO PREVENT WATER FROM ENTERING SIGNAL HEAD LOOP CABLE BETWEEN POLE AND SIGNAL HEAD

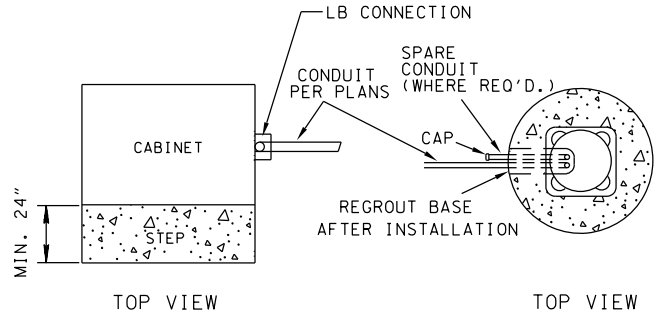


5-SECTION SIGNAL HEAD



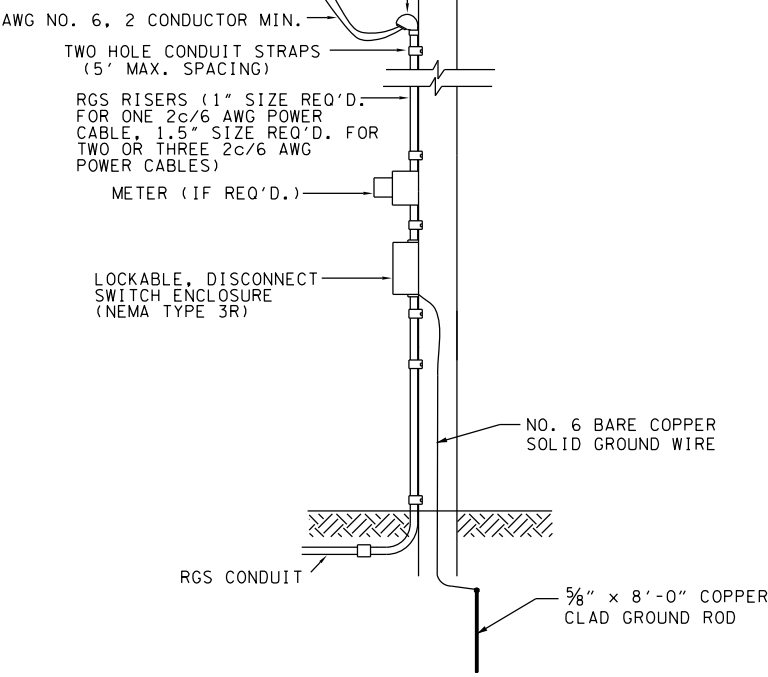
TRAFFIC SIGNAL BACKPLATE DETAIL

- REV. 12-4-13: CHANGED ANCHOR BOLTS TO THREADED.
- REV. 5-1-14: MODIFIED PEDESTAL POLE HEIGHT.
- REV. 6-27-16: REVISED AND MOVED ALL PEDESTAL POLE DETAILS TO T-SG-6. MADE MINOR TEXT EDITS ON SHEET. REDREW TRAFFIC SIGNAL BACKPLATE DETAIL TO INCLUDE LOUVERS AND RETROREFLECTIVE STRIPS.
- REV. 7-12-17: ADDED NEMA 8 PHASE DIAGRAM AND TYPICAL LOOP NUMBERING-8 PHASE NOTE FROM T-SG-12.

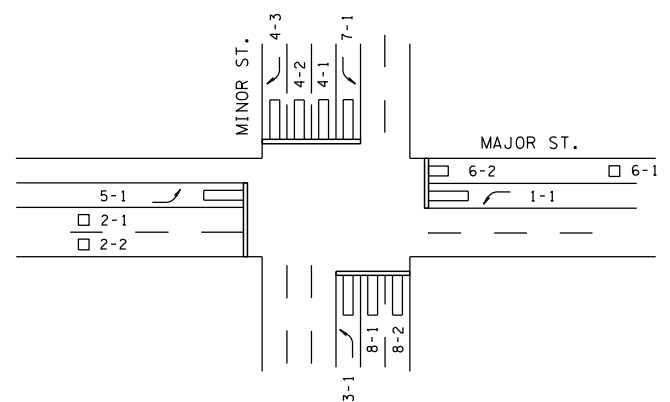
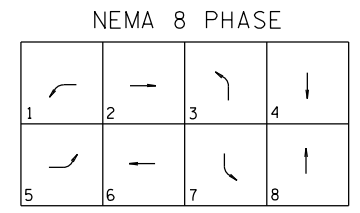


CONDUIT ENTRANCE DETAIL (EXISTING CABINET OR POLE)

SEPARATE SERVICE REQUIRED FOR EACH STREET LIGHT CIRCUIT AND TRAFFIC SIGNAL CIRCUIT. HOOK UP TO BE MADE BY UTILITY COMPANY.



POWER SERVICE DETAIL



TYPICAL LOOP NUMBERING-8 PHASE

- NOTE: WIRING SHALL BE LABELED TO CORRESPOND WITH THE APPROPRIATE LOOP(S).
1. LABEL LOOP LEAD-INS IN PULL BOX OR POLE BASE.
  2. LABEL SHIELDED DETECTOR CABLE IN CONTROLLER.
  3. LABEL DETECTOR UNITS AND HARNESSSES IN CONTROLLER.

MINOR REVISION -- FHWA APPROVAL NOT REQUIRED.

STATE OF TENNESSEE  
DEPARTMENT OF TRANSPORTATION

MISCELLANEOUS SIGNAL DETAILS

BEFORE 12-4-13 T-SG-9A

7/14/2017 11:17:31 AM P:\Traffic Operations Division\Traffic\DESIGN\Standard Drawings\Signals (SO)\IN PROGRESS\Group started 7-11-17\TSG9A\_Jordan-F.dgn