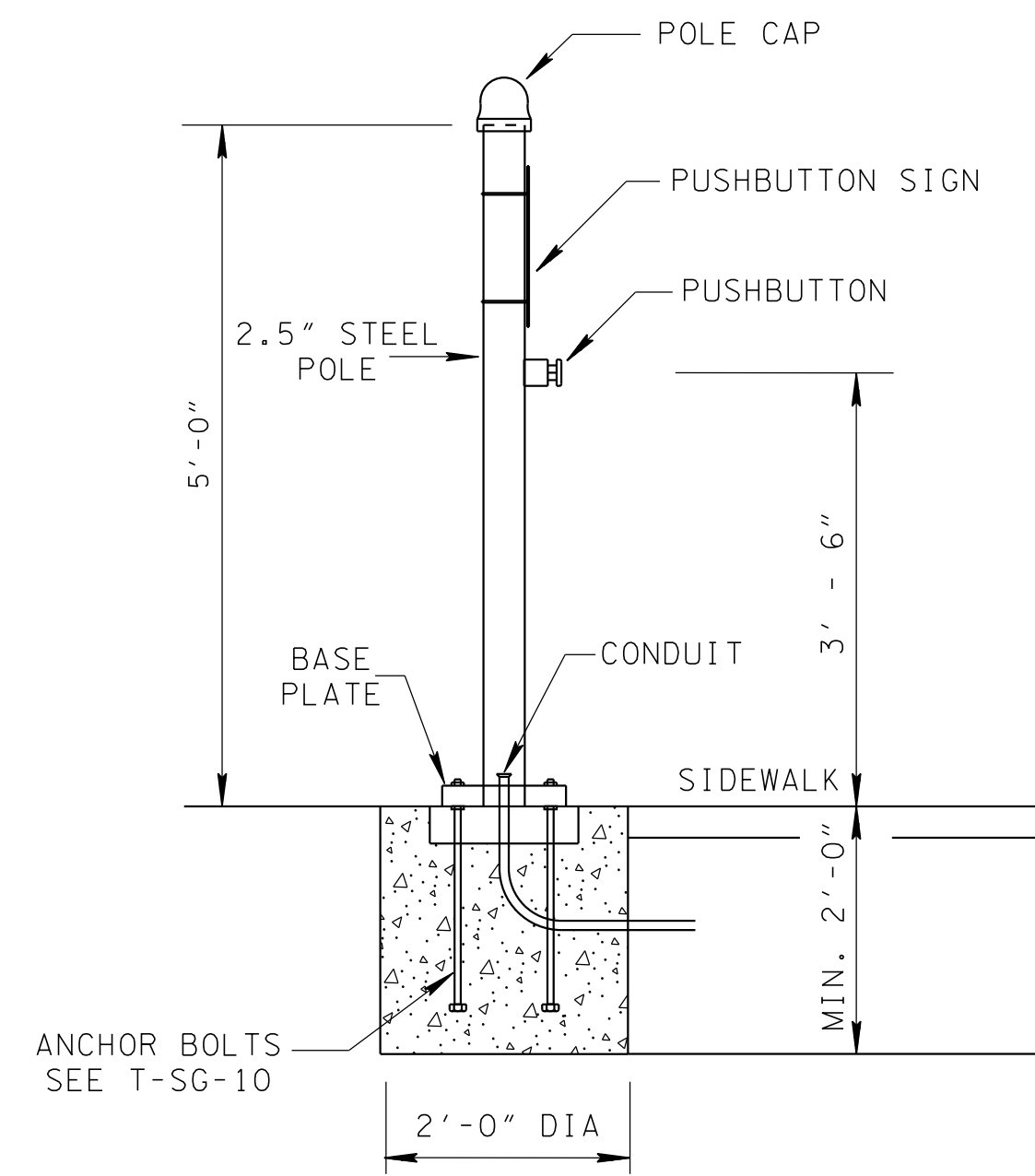
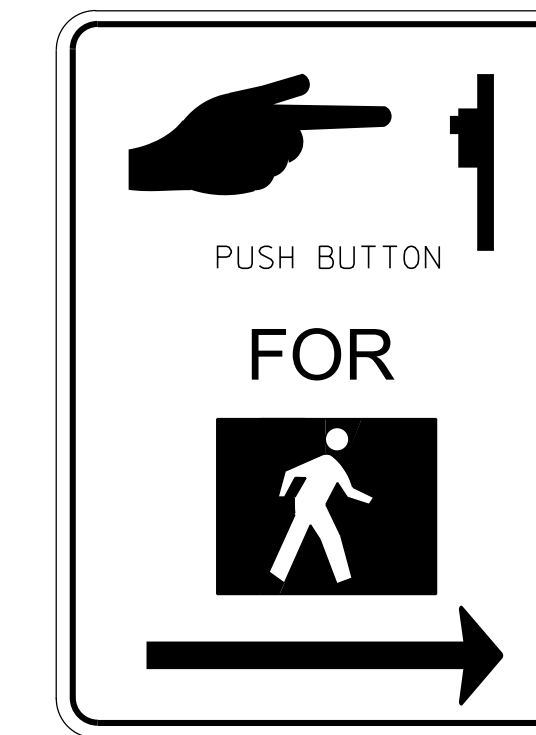


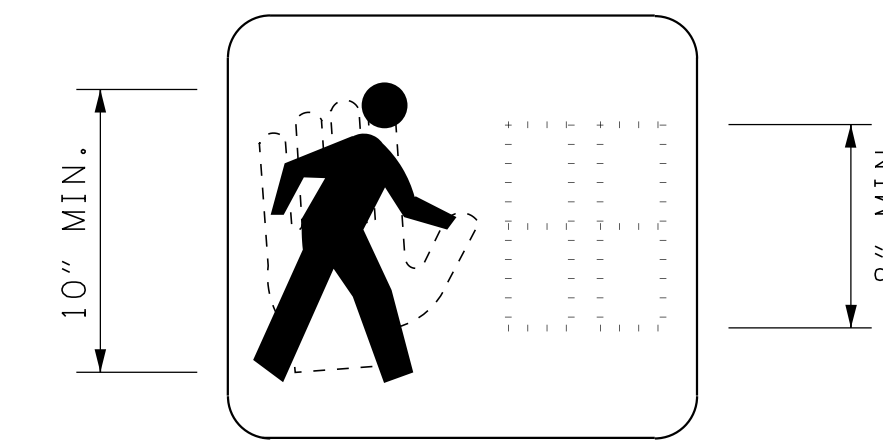
CAST PEDESTAL BASE ALTERNATES



PEDESTRIAN PUSHBUTTON POST



R10-3 (9"X12")

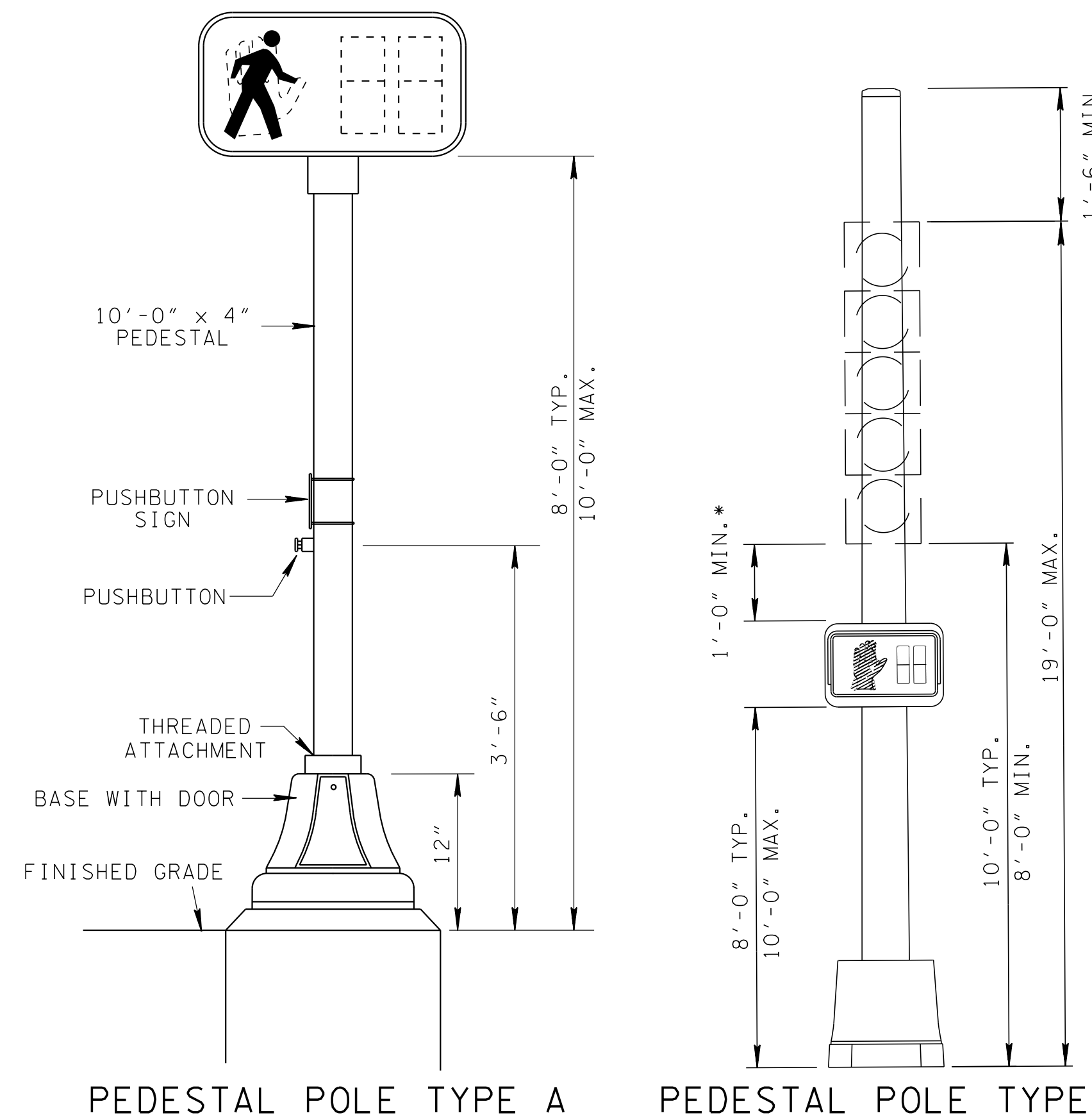


COLOR LEGEND

- MAN - WHITE
- HAND - PORTLAND ORANGE
- NUMBERS - PORTLAND ORANGE

COUNTDOWN PEDESTRIAN CROSSWALK SIGNAL

NOTE: SEE SECTION 4E.07 OF THE MUTCD FOR ADDITIONAL INFORMATION.

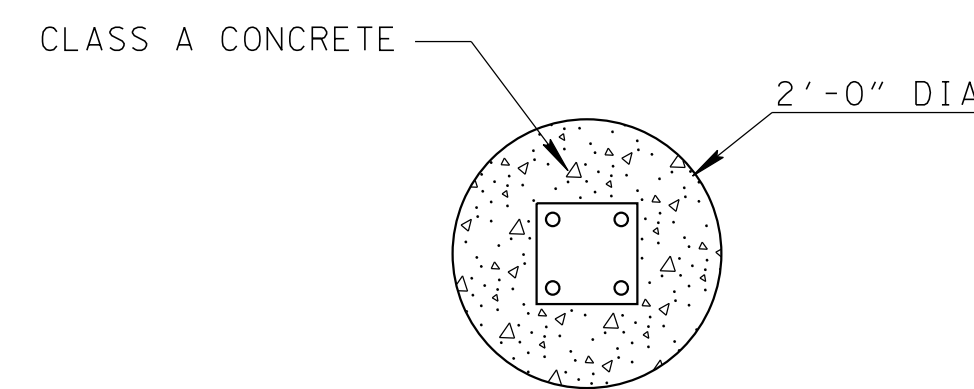


PEDESTAL POLE TYPE A

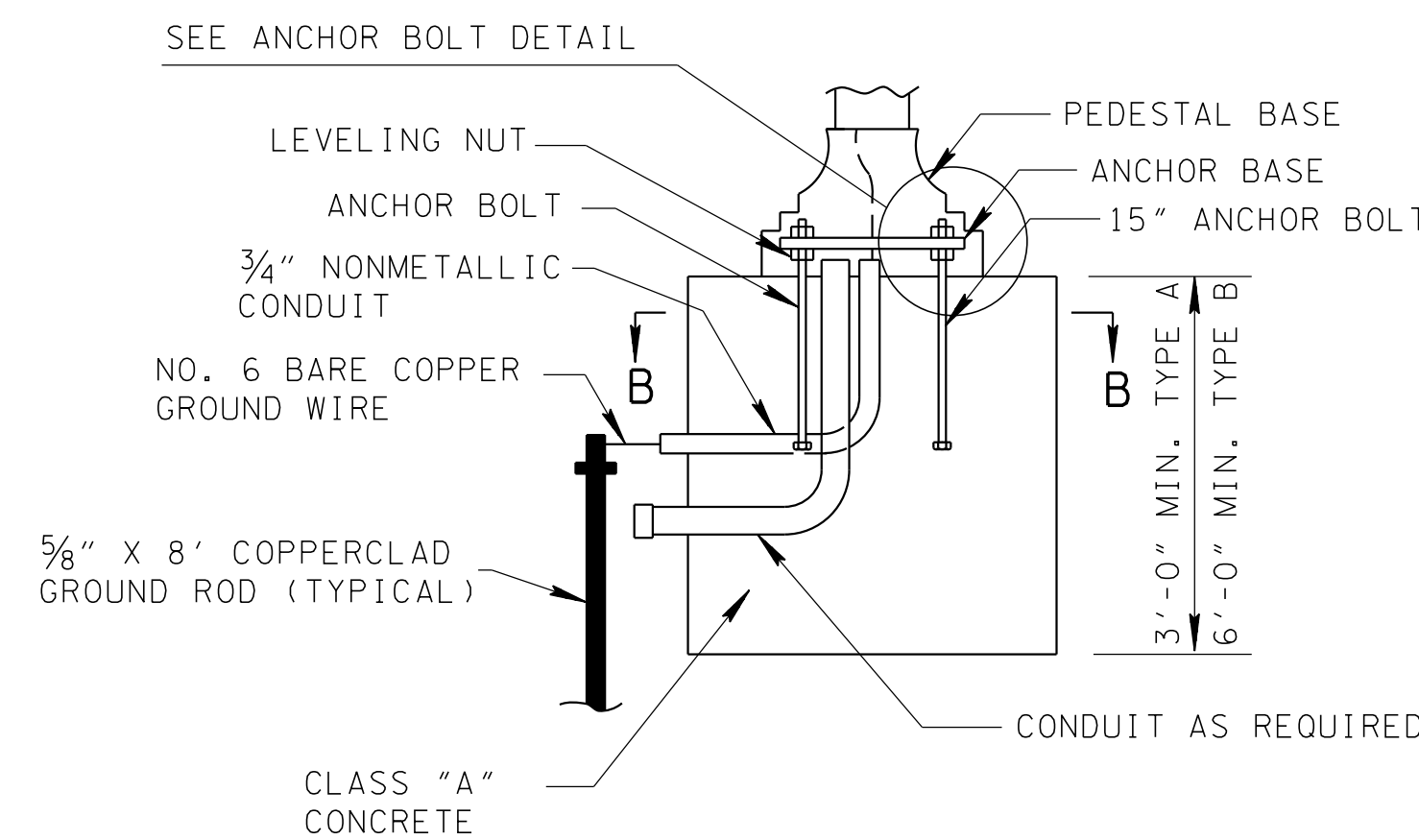
PEDESTAL POLE TYPE B

FOR PEDESTAL POLE FOOTING SEE 2' DIAMETER FOOTING ON T-SG-10

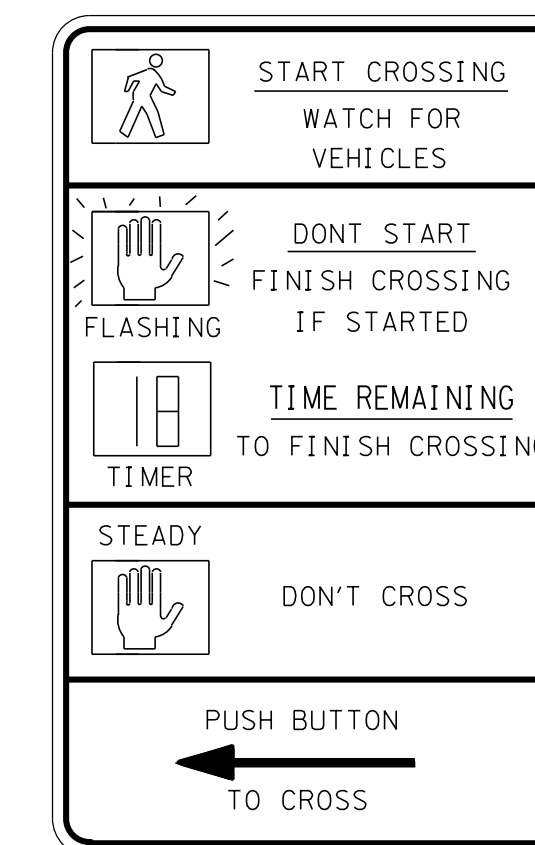
\* IF PEDESTRIAN DISPLAYS ARE PROVIDED ON SAME POLE, THE MINIMUM HEIGHT OF THE VEHICULAR DISPLAY SHALL BE AT LEAST ONE FOOT ABOVE THE TOP OF THE PEDESTRIAN DISPLAY, HOUSING, AND BRACKETS.



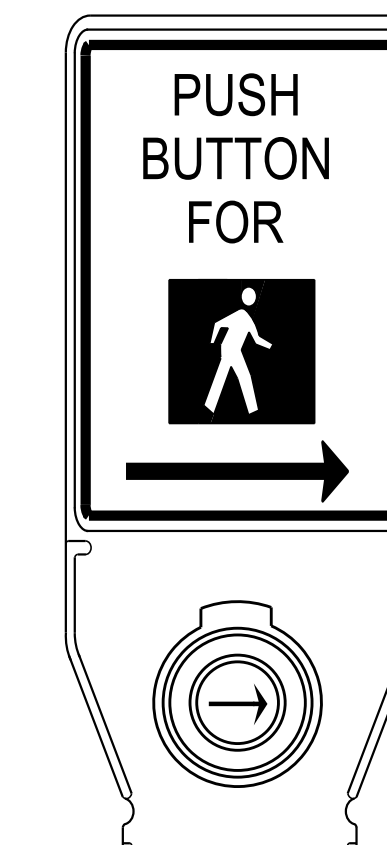
FOUNDATION DETAIL PEDESTRIAN PUSHBUTTON POST



SECTION B-B FOUNDATION DETAIL FOR STEEL PEDESTAL POLE TYPE A



R10-3E (9"X15")



R10-3 (MOD.) (5.44"X14.09")

PEDESTRIAN PUSHBUTTON SIGNS LEFT & RIGHT

- LEGEND - WHITE "WALK" (FIGURE) ON BLACK  
 ORANGE "DONT WALK" (HAND) ON BLACK  
 ALL ELSE BLACK  
 BACKGROUND - WHITE (REF.)  
 LOCATION - IMMEDIATELY ABOVE PUSHBUTTON

- MATERIAL - TYPE II REFLECTIVE SHEETING  
 1) MOUNTED ON 0.064" MINIMUM THICK FLAT SHEET ALUMINUM AND BANDED TO WOOD POLES, STEEL POLES, OR PEDESTAL POLES.

PEDESTRIAN GENERAL NOTES

- (A) WHERE PEDESTRIAN SIGNAL HEADS ARE PROVIDED AT PEDESTRIAN STREET CROSSINGS, THEY SHALL INCLUDE ACCESSIBLE PEDESTRIAN SIGNALS AND PEDESTRIAN PUSHBUTTONS COMPLYING WITH SECTIONS 4E.08 THROUGH 4E.13 OF THE MUTCD (INCORPORATED BY REFERENCE, SEE R104.2). OPERABLE PARTS SHALL COMPLY WITH R403.
- (B) PUSHBUTTONS AT SIGNALIZED CROSSWALKS SHALL INCORPORATE A LOCATOR TONE MEETING THE REQUIREMENTS OF MUTCD SECTION 4E.12, SUBSECTION 04 THROUGH 06. AN ACCESSIBLE PEDESTRIAN SIGNAL AND PEDESTRIAN PUSHBUTTON IS AN INTEGRATED DEVICE THAT COMMUNICATES INFORMATION ABOUT THE WALK AND DON'T WALK INTERVALS AT SIGNALIZED INTERSECTIONS IN NON -VISUAL FORMATS (I.E. AUDIBLE TONES AND VIBROTACTILE SURFACES) TO PEDESTRIANS WHO ARE BLIND OR HAVE LOW VISION.
- (C) PEDESTRIAN PUSHBUTTON SHALL PROVIDE TACTILE VIBRATING ARROW BUTTON AND AUDIBLE SOUND.
- (D) THE COST OF PEDESTRIAN PUSHBUTTON SHALL INCLUDE THE FRAME, SIGN, ADA COMPLIANT PUSHBUTTON, AND MOUNTING HARDWARE.

730-26.11 COUNTDOWN PEDESTRIAN SIGNAL HEAD W/ AUDIBLE PUSHBUTTON & 15" SIGN