



STATE OF TENNESSEE
DEPARTMENT OF TRANSPORTATION
STRUCTURES DIVISION
SUITE 1100, JAMES K. POLK BUILDING
NASHVILLE, TENNESSEE 37243-0349
(615) 741-3351

BUTCH ELEY
DEPUTY GOVERNOR &
TDOT COMMISSIONER

BILL LEE
GOVERNOR

TO: Structures Division Engineers, Managers, and Consultants

FROM: Ted A. Kniazewycz, P.E., F.ASCE *TAK*
Civil Engineering Director – Structures Division

DATE: November 14, 2022

RE: Structural Design Memorandum SDM-22-03
Approval of Deck Form Supports

This memorandum is being reissued due to recent shop drawings having been approved that are not in compliance with this policy.

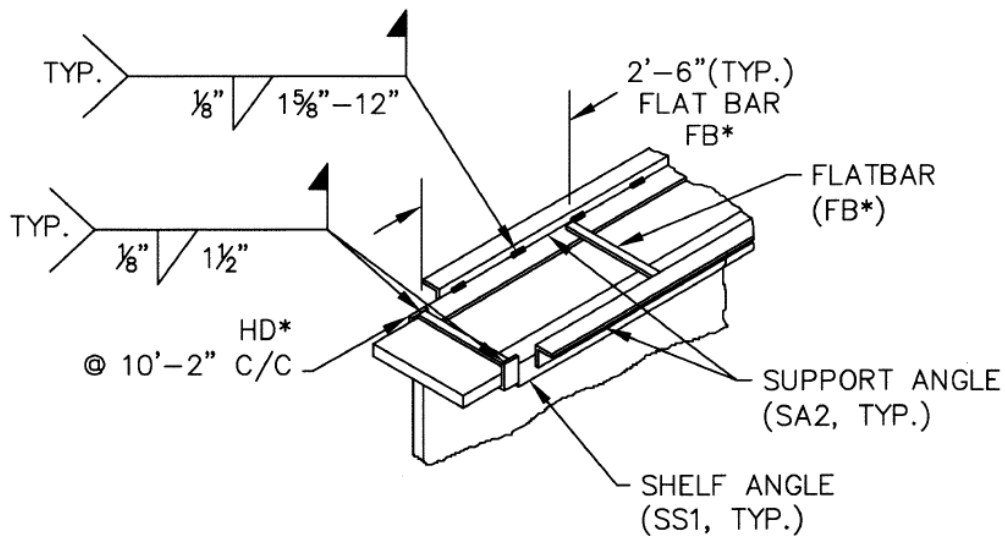
For Metal Deck Form Supports:

Shop drawings for metal deck forms on steel girders shall have details similar to the details shown below. Note the presence of the Shelf Angle (SS1). It has been noted that suppliers have omitted this angle and the support angle is being welded directly to the flat bar. This is not acceptable according to the current Structures Division office policy. The shelf angles protect the top flange from arc strikes and weld spatter. In addition, no cutting or burning of the flat bars to avoid splice bolts will be allowed. The flat bar may be tilted to fit between bolts. All pieces shall be galvanized.

For Precast Concrete Panel Supports:

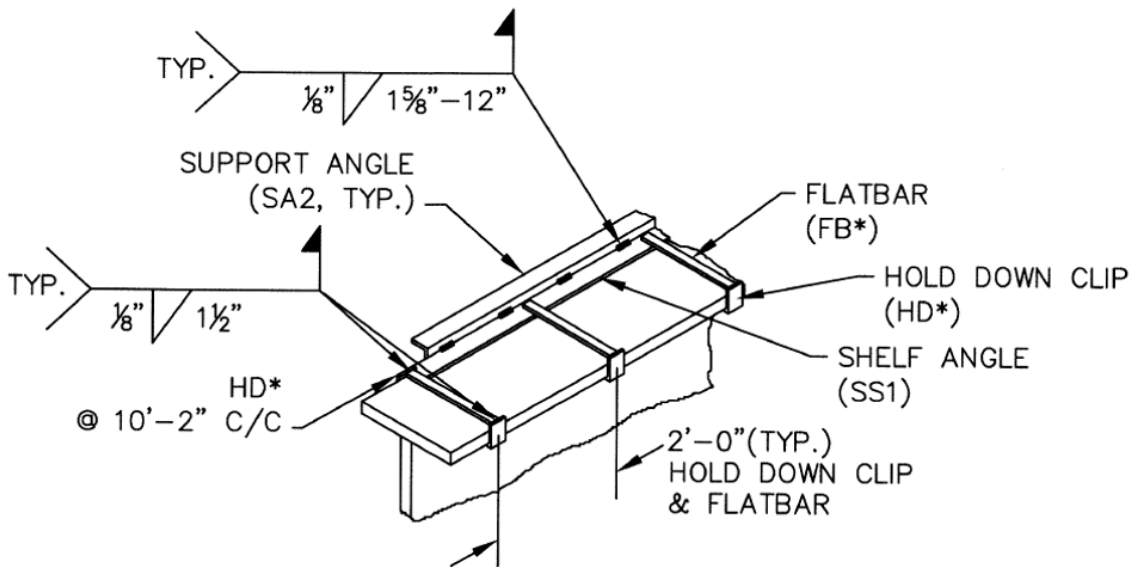
Details shall be in accordance with STD-4-1 thru 3.

Acceptable Metal Deck Form Support Detail: (Dimensions shown below are examples only.)



TYPICAL DETAIL

@ ALL INTERIOR STEEL GIRDERS



TYPICAL DETAIL

@ ALL EXTERIOR STEEL GIRDERS

NOTE: WHEN WELDING FLAT BARS TO HOLD-DOWN CLIPS, CARE SHALL BE TAKEN TO PREVENT ARC STRIKES FROM DAMAGING THE TOP FLANGE OF THE STEEL GIRDER. THIS SHALL BE ACCOMPLISHED BY PROVIDING SHIELDING, BY WELDING THE FLAT BAR TO THE HOLD-DOWN CLIP IN THE SHOP, OR BY OTHER METHODS APPROVED BY TDOT STRUCTURES.