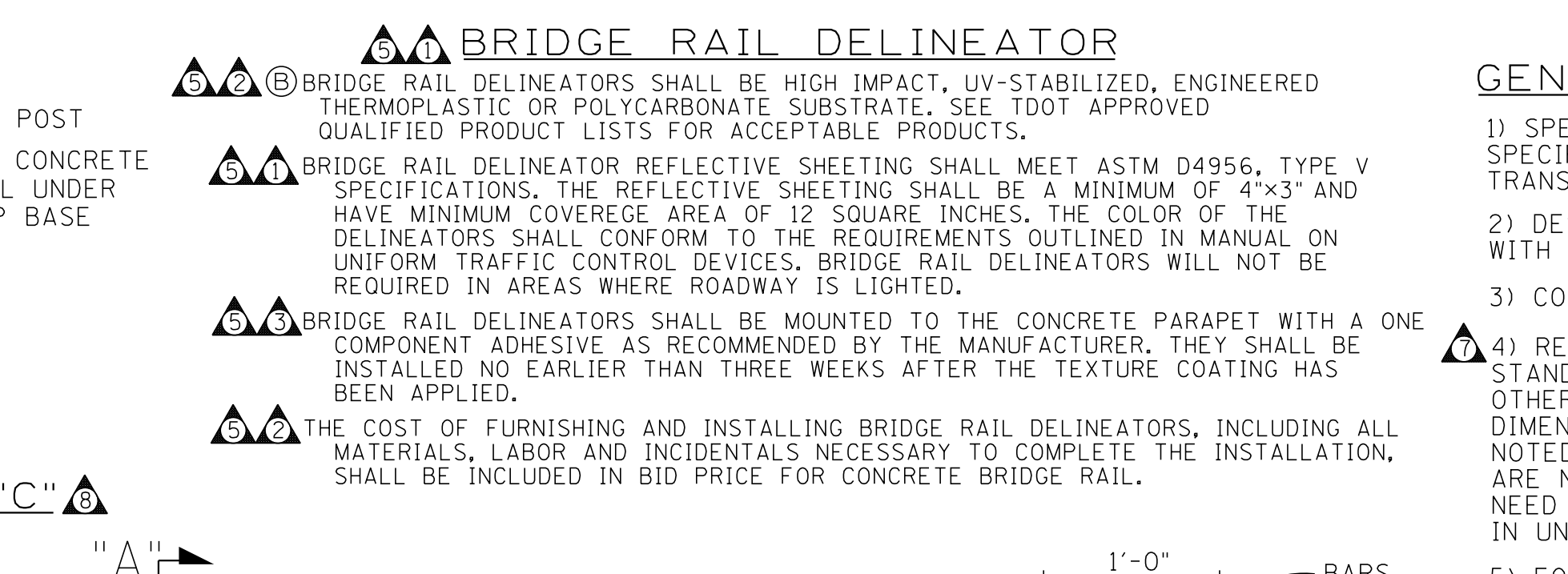
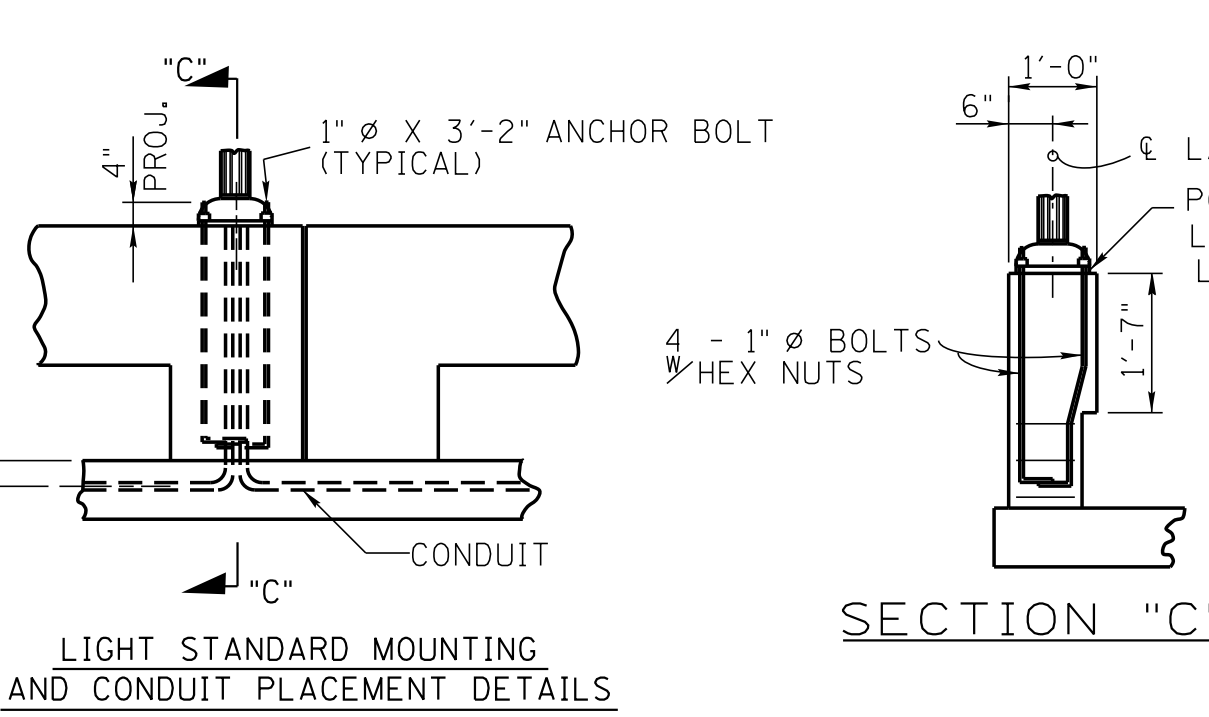
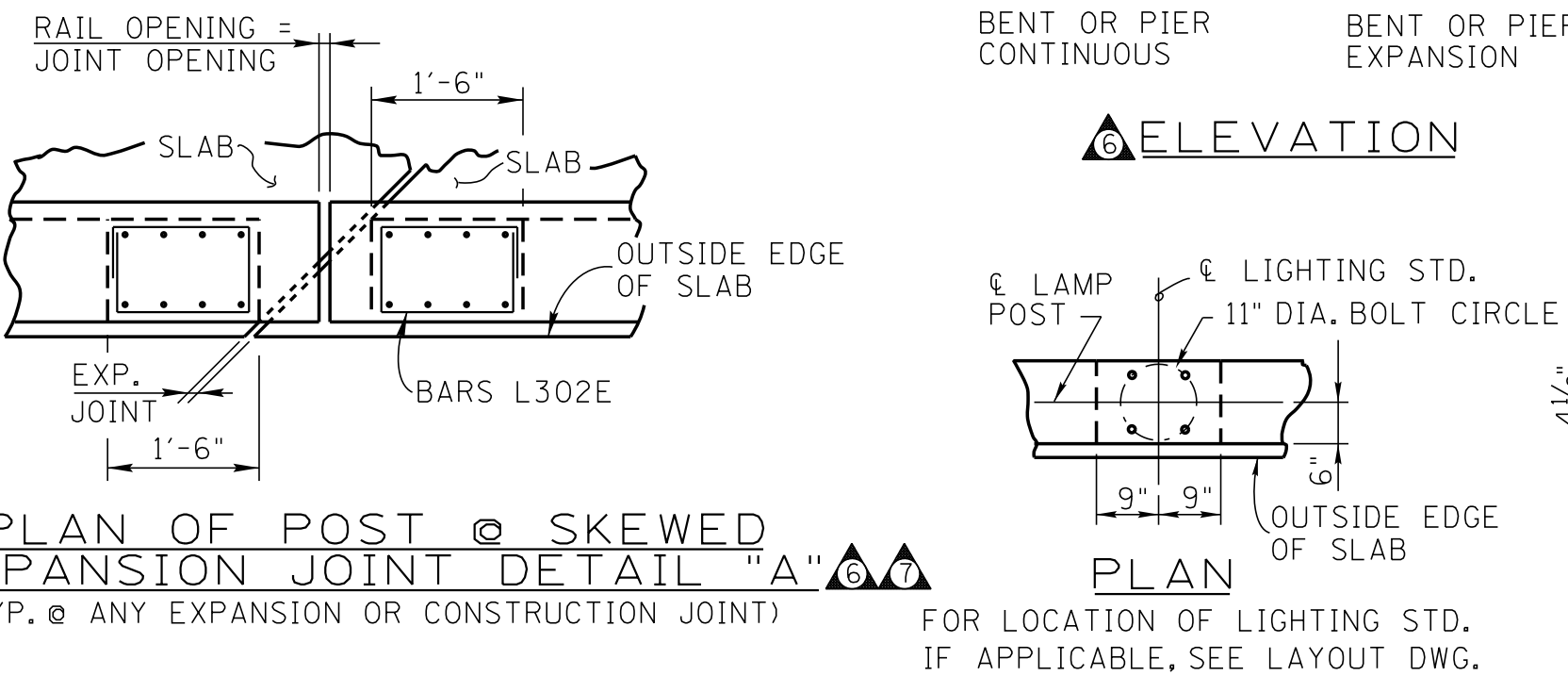
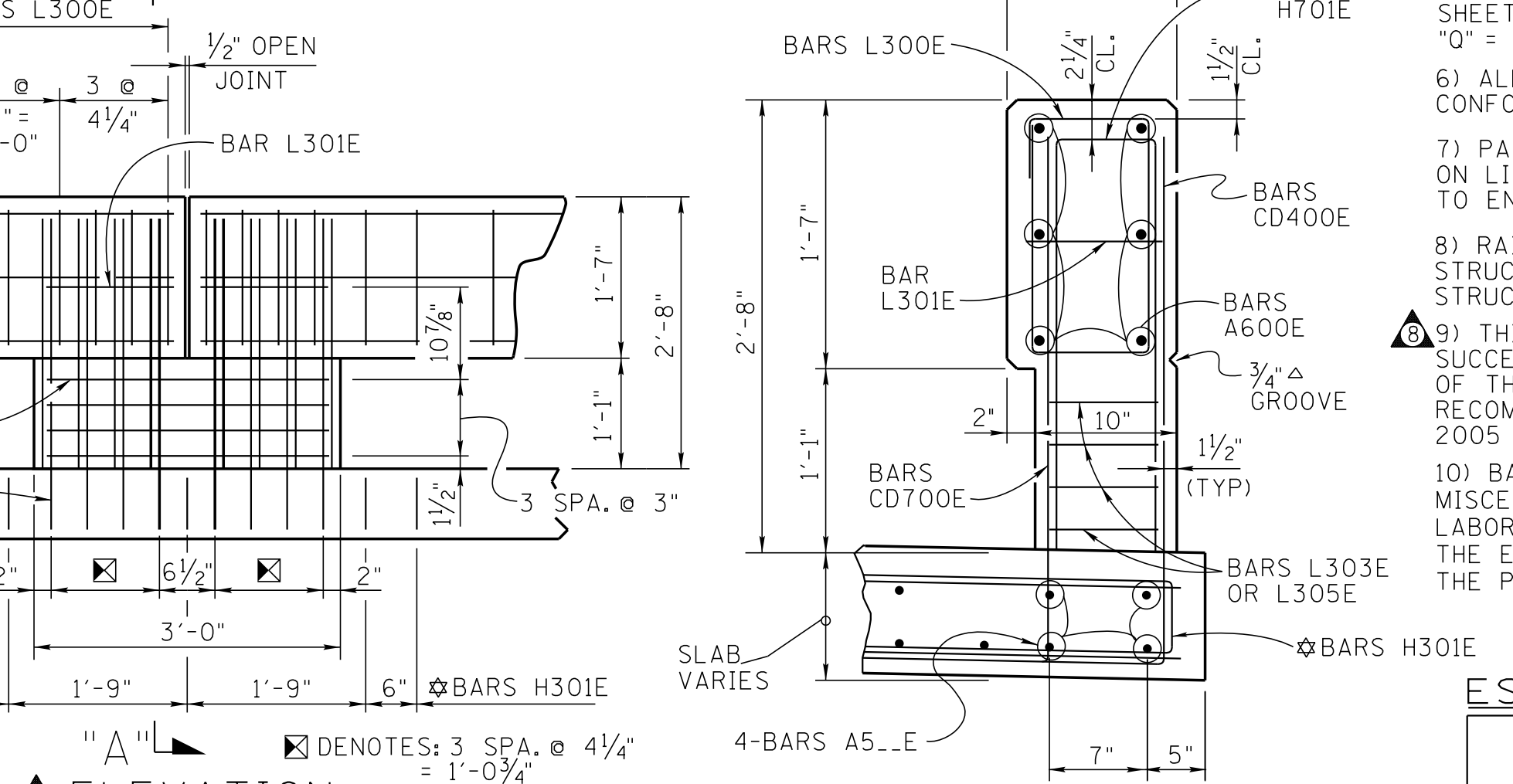
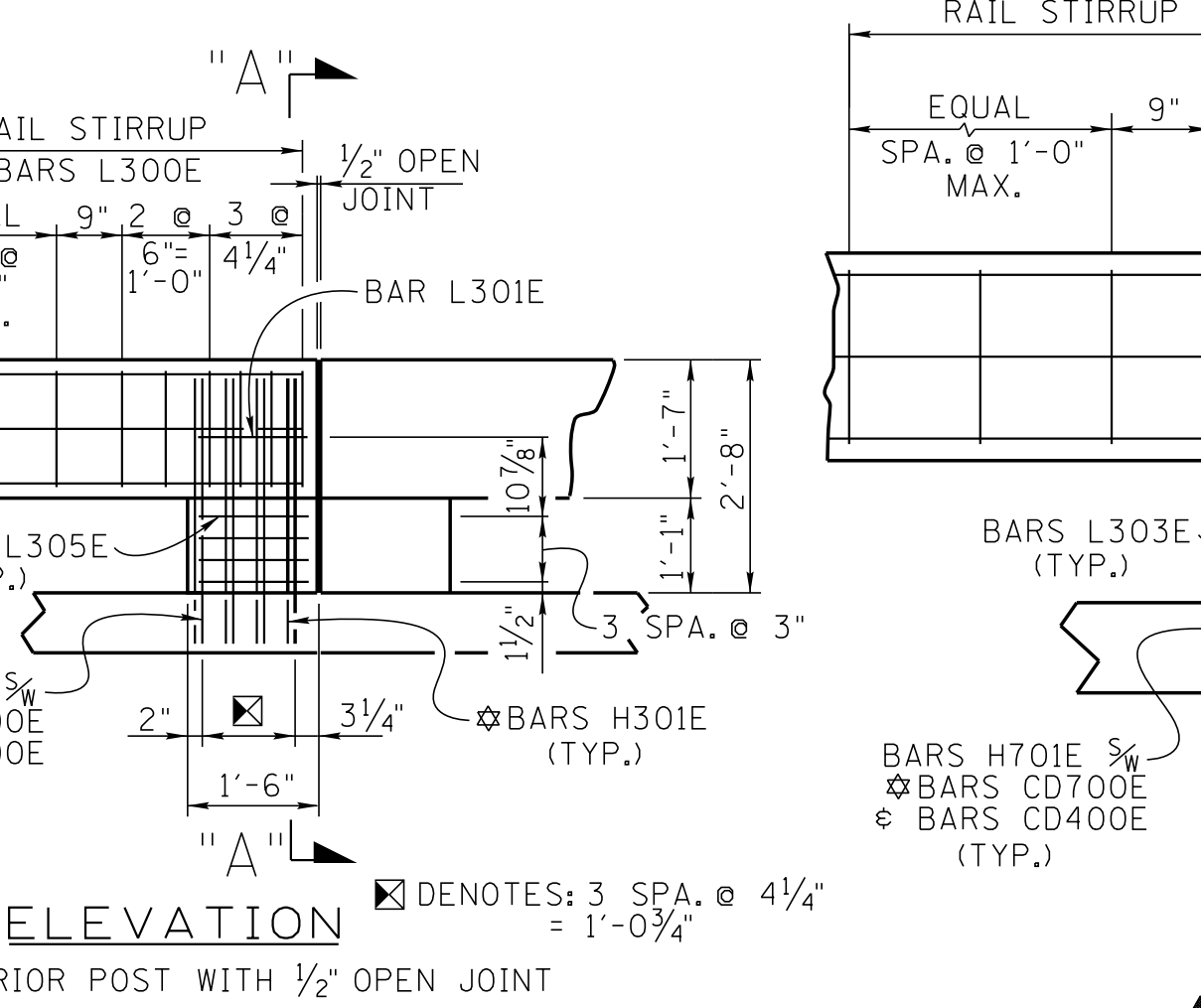
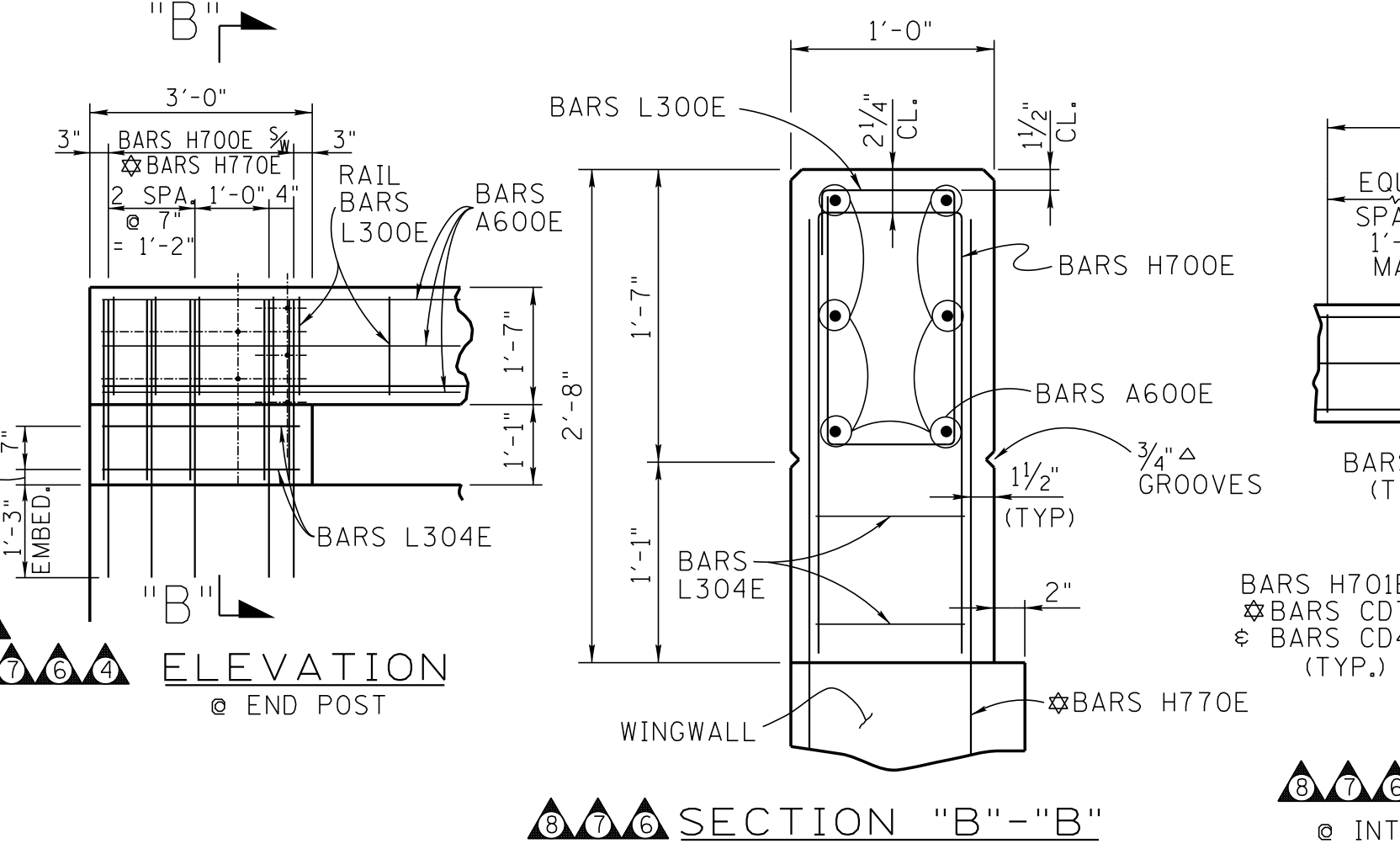


PROJECT NO.	YEAR	SHEET NO.	
	1987		
REVISIONS			
NO.	DATE	BY	BRIEF DESCRIPTION
1	10-25-93	R.M.D.	COLOR OF DELINEATOR
2	12-20-93	RMD	ADDED ALT. MOUNT FOR DELINEATOR
3	3-28-94	MAH	REVISED NOTE
4	12-18-95	BRB	REVISED SPACING OF WINGPOST REINF. AND REVISED LENGTH OF BOLT
5	5-21-99	CMH	REVISED NOTE @ E DELINEATORS
6	7-31-00	CMH	REVISED ELEVATION SHOWING JOINT LOCATION @ BACKFACE OF ENDWALL. EXPANSION JOINT DETAIL "A", BAR DETAILS INTERIOR & WING POST REINFORCING
7	11-1-10	JHW	EPOXY COAT STEEL & NOTE
8	6-2-14	JHW	CHANGED HT. TO 2'-8"; GEN. REV.
9	4-15-20	JHW	REVISED GUARDRAIL ATTACHMENTS REMOVED PLATE DETAIL AND REMOVED PLAN OF OPTIONAL GUARDRAIL ATTACHMENT

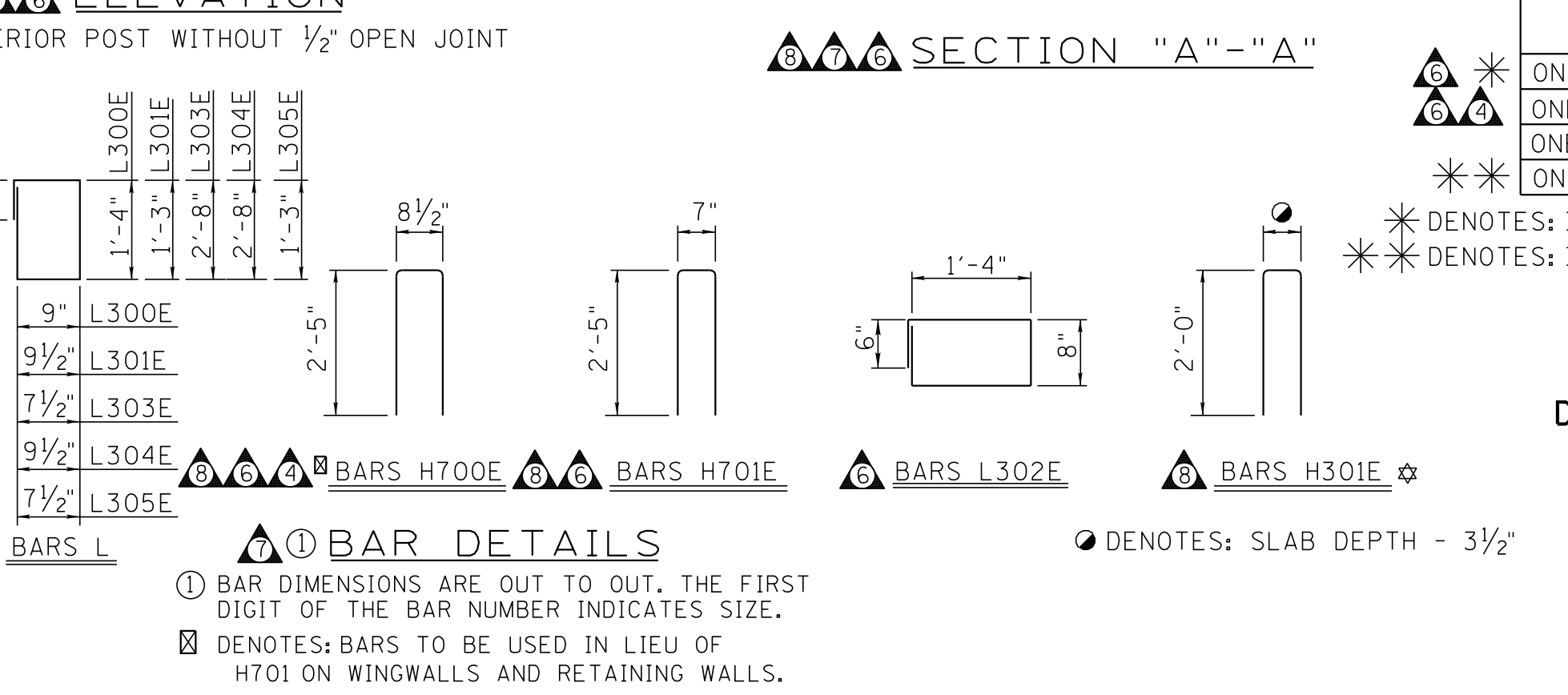
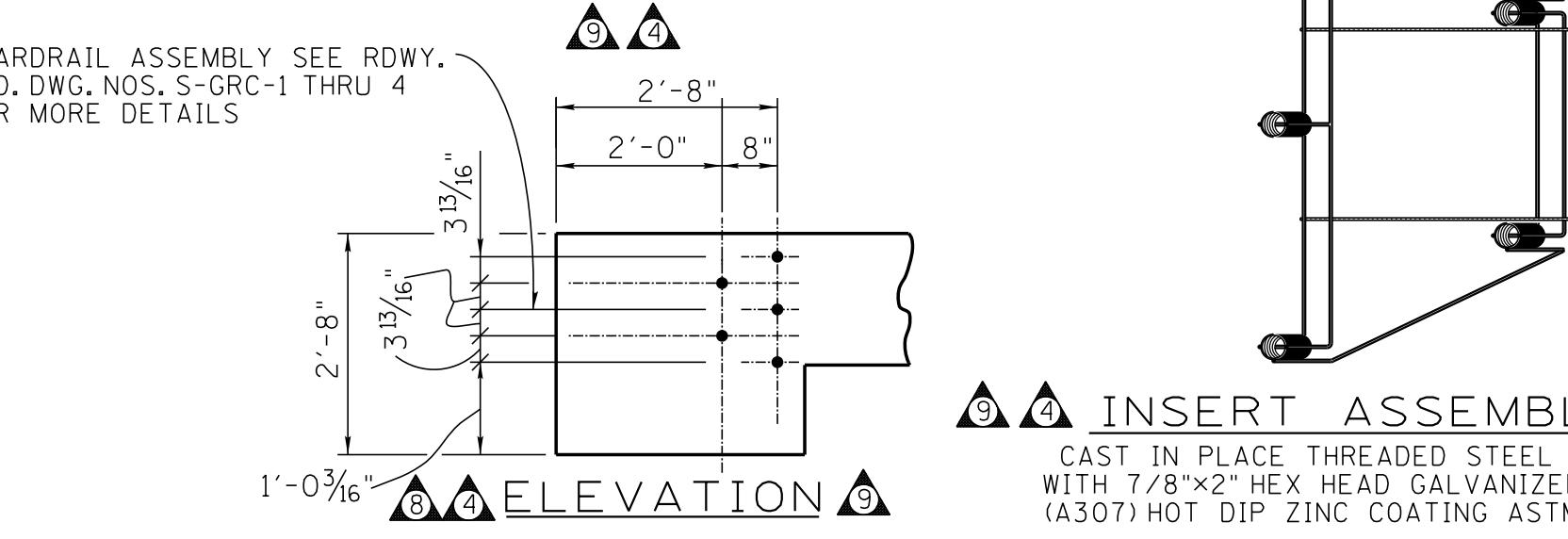


- GENERAL NOTES:**
- SPECIFICATIONS: STANDARD ROAD AND BRIDGE SPECIFICATIONS OF THE TENNESSEE DEPT. OF TRANSPORTATION CURRENT EDITION.
 - DESIGN SPECIFICATIONS: AASHTO CURRENT EDITION WITH ADDENDA.
 - CONCRETE: TO BE CLASS "A".
 - REINFORCING STEEL: TO BE ASTM A615 GRADE 60. STANDARD CRSI HOOK DETAILS APPLY UNLESS OTHERWISE NOTED ON THE BILL OF STEEL. SPACING DIMENSIONS ARE CENTER TO CENTER UNLESS OTHERWISE NOTED ON DETAIL DRAWINGS. IF BARS IN BRIDGE DECK ARE NOT EPOXY COATED, THEN THE BARS IN THE RAIL NEED NOT BE EPOXY COATED. COST TO BE INCLUDED IN UNIT PRICE BID FOR RAIL.
 - FOR DIMENSIONS "Q" AND "L" SEE LAYOUT SHEET OF STRUCTURES. MAX. "L" = 10'-0" "Q" = OUT TO OUT WINGPOST.
 - ALL POSTS SHALL BE VERTICAL. RAIL SHALL CONFORM TO LINE AND GRADE OF ROADWAY.
 - PAYMENT FOR CONCRETE RAIL SHALL BE BASED ON LINEAR FEET FROM END OF WINGPOST TO END OF WINGPOST.
 - RAILING SHALL NOT BE CONSTRUCTED ON ANY STRUCTURE UNTIL THE FALSEWORK HAS BEEN STRUCK.
 - THIS RAIL IS SIMILAR TO ONE THAT HAS BEEN SUCCESSFULLY CRASH TESTED TO THE SATISFACTION OF THE FEDERAL HIGHWAY ADMINISTRATION AND IS RECOMMENDED FOR USE IN FHWA BRIDGE RAIL GUIDE 2005 - LEVEL TL-4.
 - BASIS OF PAYMENT SHALL INCLUDE ALL MISCELLANEOUS ITEMS TO COMPENSATE FOR ALL LABOR, MATERIALS, TOOLS AND INCIDENTALS FOR THE ENTIRE CONCRETE RAIL SHALL BE INCLUDED IN THE PRICE BID FOR ITEM 620-06.



ESTIMATED QUANTITIES

ITEMS	CLASS "A" CONCRETE CY.	EPOXY COATED REINF. STEEL LB.
ONE INTER. POST, 90°	0.2762	140.7
ONE WING POST, 90°	0.2963	96.5
ONE LINEAR FT. RAIL	0.0586	10.8
ONE INTER. POST, 90°	0.1381	64.6



FOR USE WHEN GUARDRAIL ATTACHMENTS REQUIRED

DESIGNED BY SEE GEN. NOTE NO. 9 DATE
 DRAWN BY K. PHILLIPS & M. SURDAM DATE 5-11-87
 SUPERVISED BY JWF AND RMD DATE 5-11-87
 CHECKED BY DATE

MINOR REVISION - FHWA APPROVAL NOT REQUIRED

STATE OF TENNESSEE
 DEPARTMENT OF TRANSPORTATION
 STANDARD CONCRETE RAIL
 1987

CORRECT *Edward P. Wasserman*
 ENGINEER OF STRUCTURES

BAR DIMENSIONS ARE OUT TO OUT, THE FIRST DIGIT OF THE BAR NUMBER INDICATES SIZE.
 DENOTES: BARS TO BE USED IN LIEU OF H701 ON WINGWALLS AND RETAINING WALLS.
 BARS H770E TO BE INCLUDED IN REINFORCING QUANTITIES AND BILL OF STEEL FOR WINGWALLS.
 BARS H301E, CD700E & CD400E TO BE INCLUDED IN REINFORCING QUANTITIES AND BILL OF STEEL FOR SUPERSTRUCTURE.
 NOTE: BARS LISTED IN ABOVE NOTES ARE NOT INCLUDED IN WING POST OR INTERIOR POST QUANTITIES SHOWN THIS SHEET.