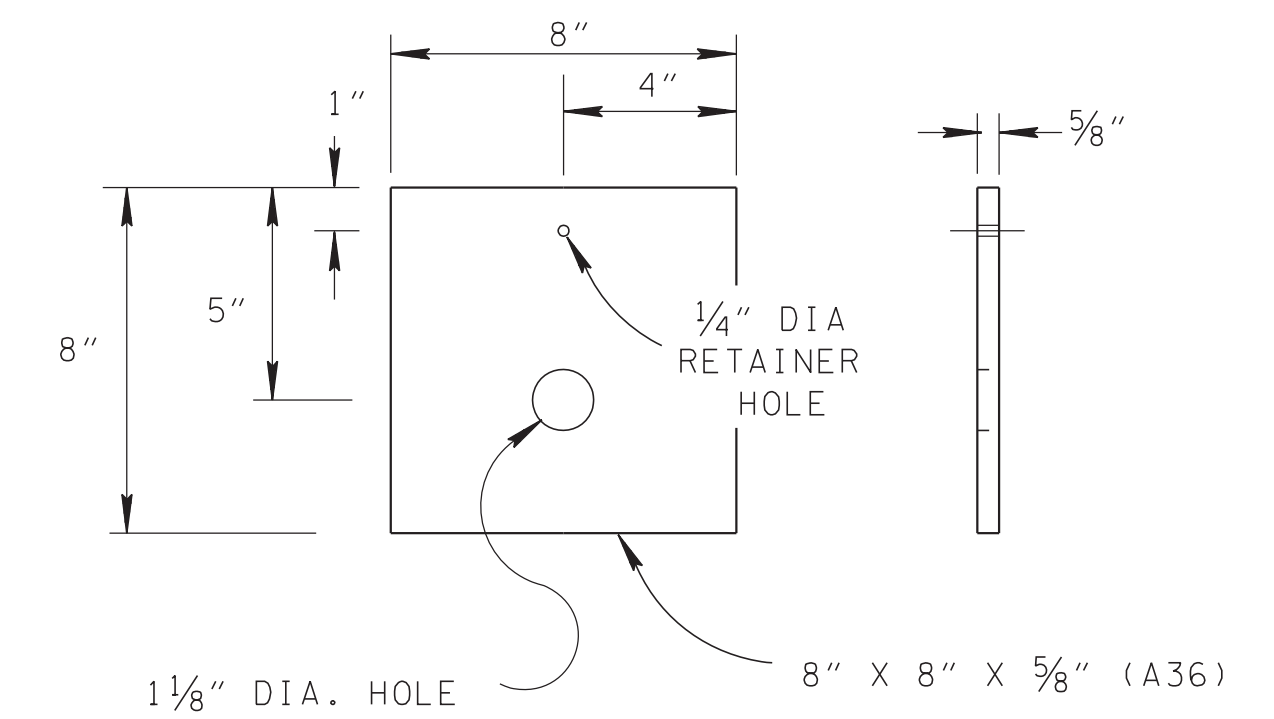
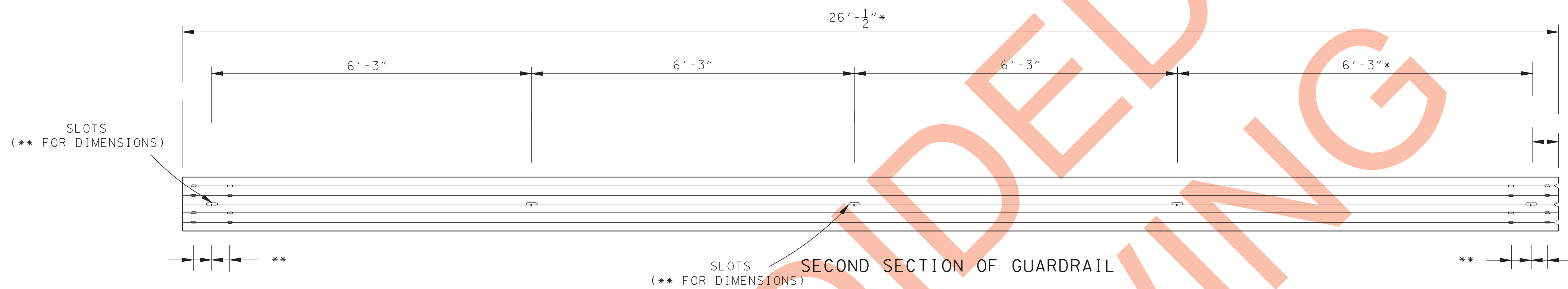
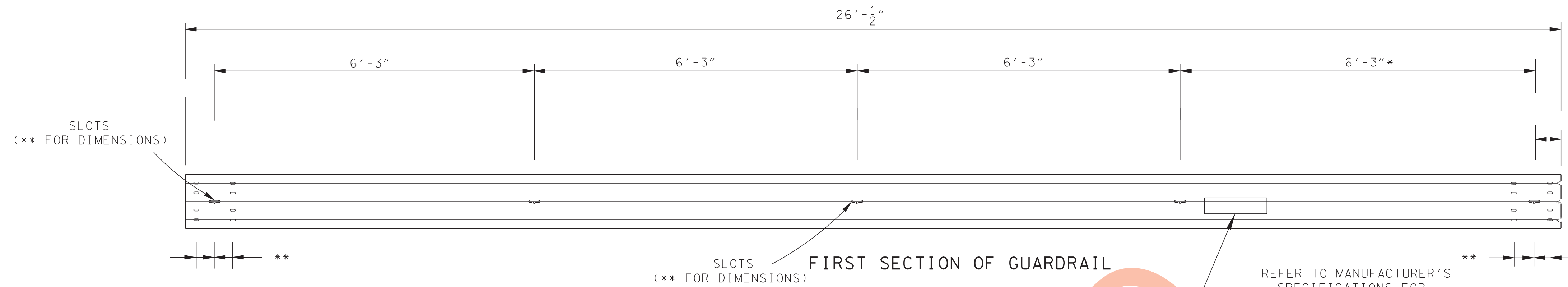
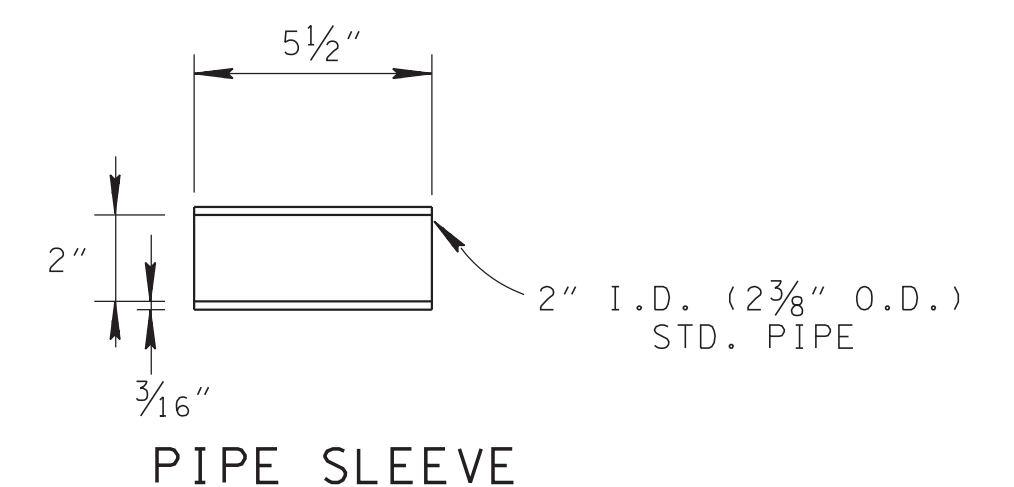


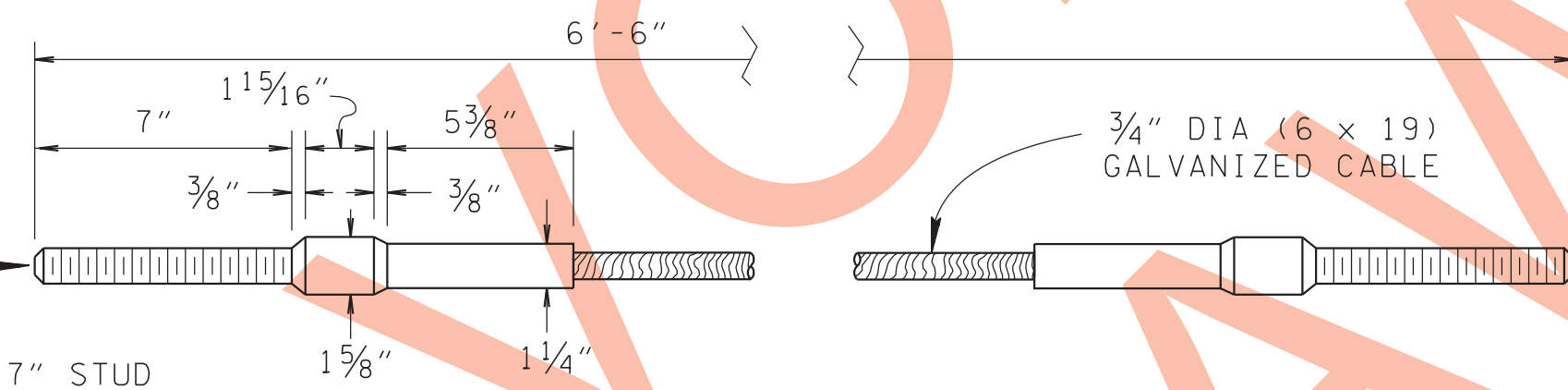
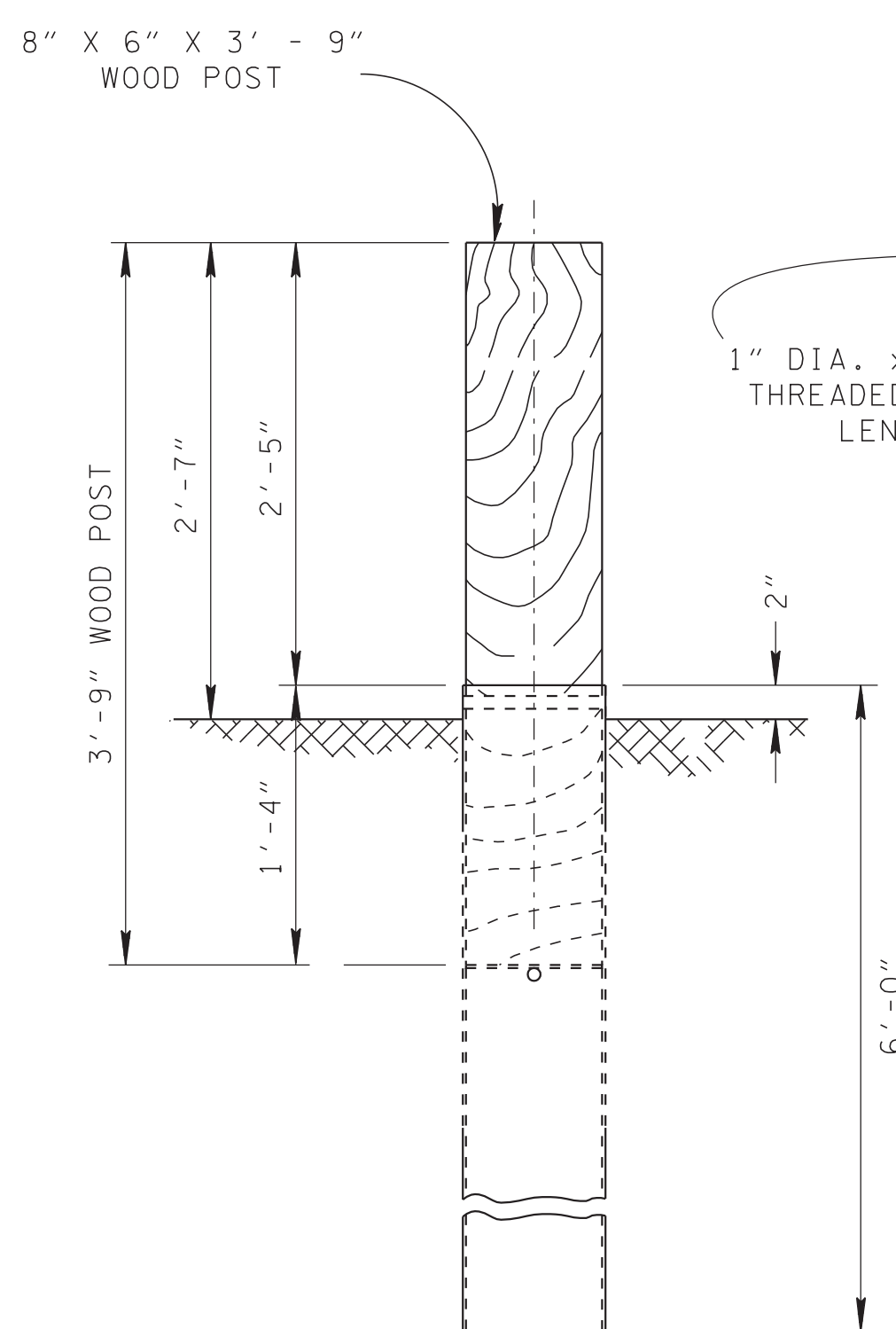
EXTRUDER/IMPACT HEAD W-BEAM GUARDRAIL ELEMENT DETAILS



BEARING PLATE DETAIL
FOR BEARING PLATE PLACEMENT THE 5" SIDE SHOULD BE INSTALLED UP.



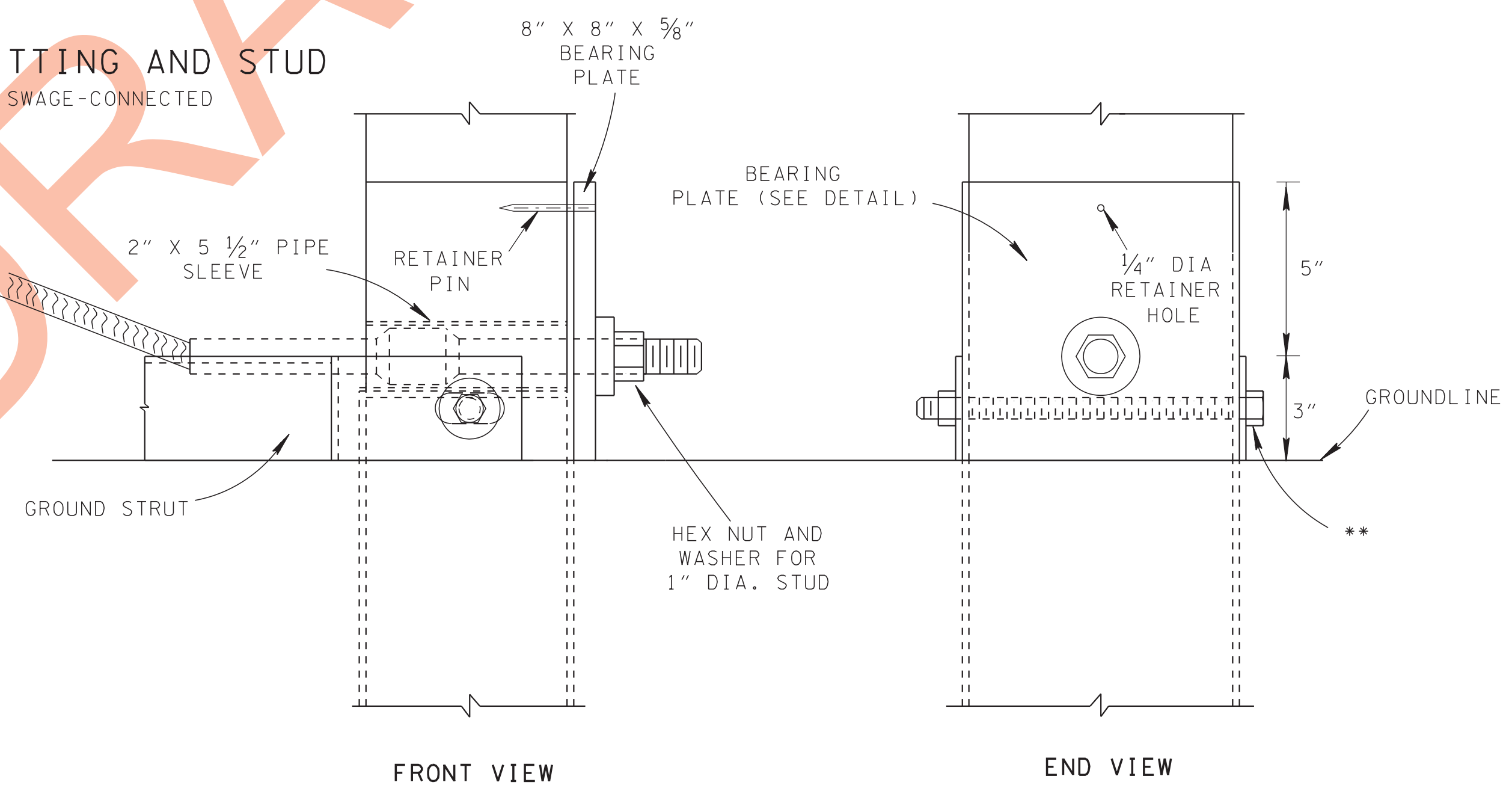
SPECIAL INSTALLATION NOTES
SEE SPECIAL INSTALLATION NOTES AND GENERAL NOTE D ON S-GR-43



STANDARD SWAGE FITTING AND STUD
NOTE: CABLE TO BE SWAGE-CONNECTED

* MAY VARY DEPENDING ON TYPE AND MANUFACTURER. REFER TO SHOP DRAWINGS.

** DENOTES "SEE MANUFACTURER'S SHOP DRAWINGS"



FRONT VIEW END VIEW

- GENERAL NOTES**
- (A) THE NO. 1 AND NO. 2 BREAKAWAY POSTS WILL HAVE A 6" x 8" (NOMINAL) CROSS-SECTION AREA. ALL POSTS SHALL BE ERECTED SO THAT THE GUARDRAIL WILL HAVE A TOP-OF-RAIL HEIGHT OF 2'-3".
 - (B) ALL HOLES IN WOOD POSTS ARE TO BE DRILLED BEFORE PRESERVATIVE TREATMENT.
 - (C) ALL CUTTING, DRILLING, AND WELDING OF STEEL COMPONENTS SHALL BE DONE BEFORE GALVANIZING.
 - (D) THE FINISHED CABLE ASSEMBLY WILL NOT BE ACCEPTABLE UNLESS IT IS IN TENSION WITH NO SAG.
 - (E) SEE STANDARD DRAWING NOS. S-GR-43 FOR ADDITIONAL DETAILS AND GENERAL NOTES.
 - (F) THE STEEL TUBES ARE TO BE DRIVEN INTO GROUND BEFORE THE WOODEN POSTS ARE INSERTED.
 - (G) A RETAINER PIN TO BE INSTALLED TO KEEP THE BEARING PLATE IN UPRIGHT POSITION ON WOOD POST DURING THE ASSEMBLY.

NO. 1 & 2 BREAKAWAY POSTS WITH TUBE SLEEVE (SEE GENERAL NOTE D ON S-GR-43)