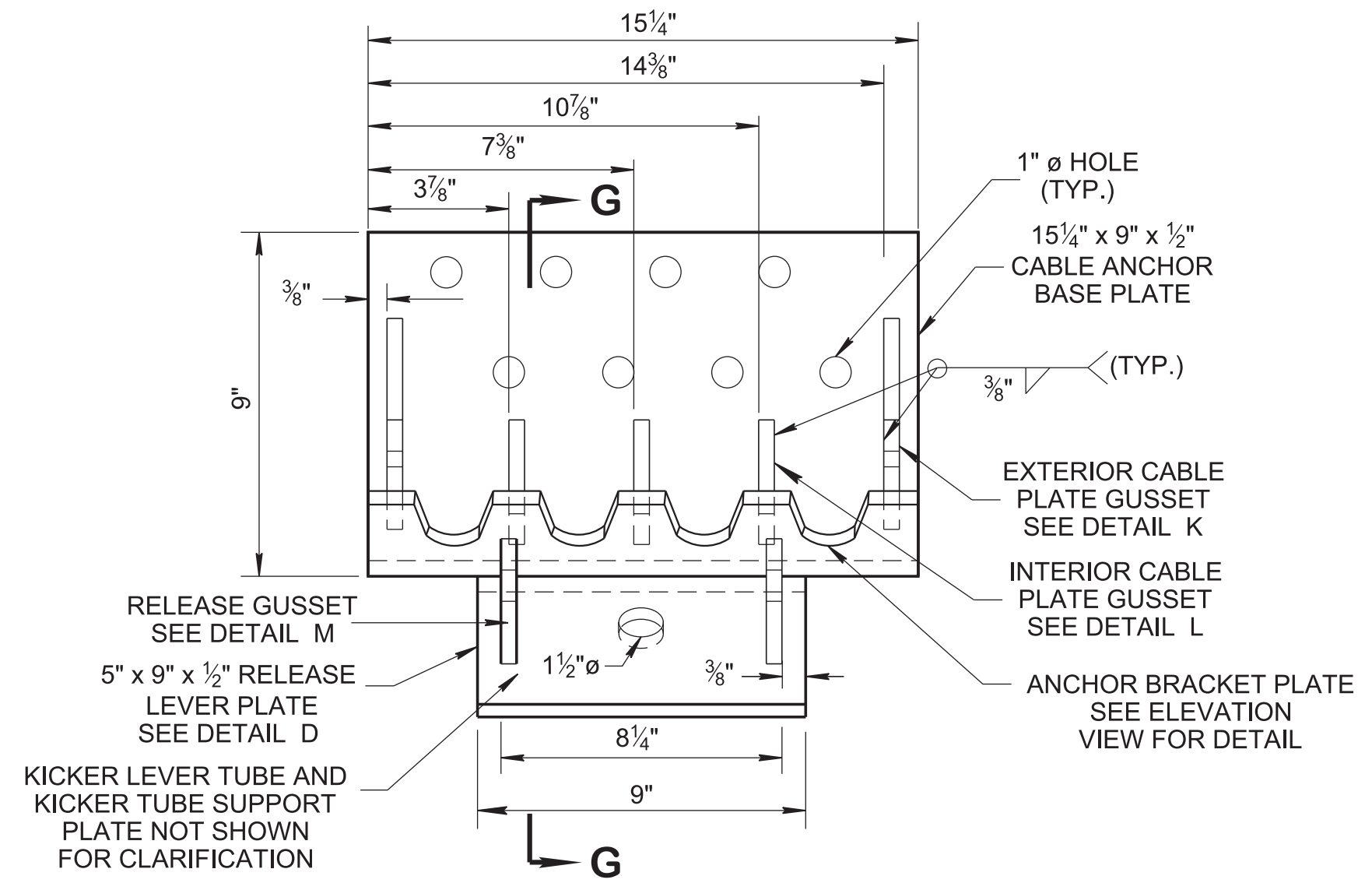
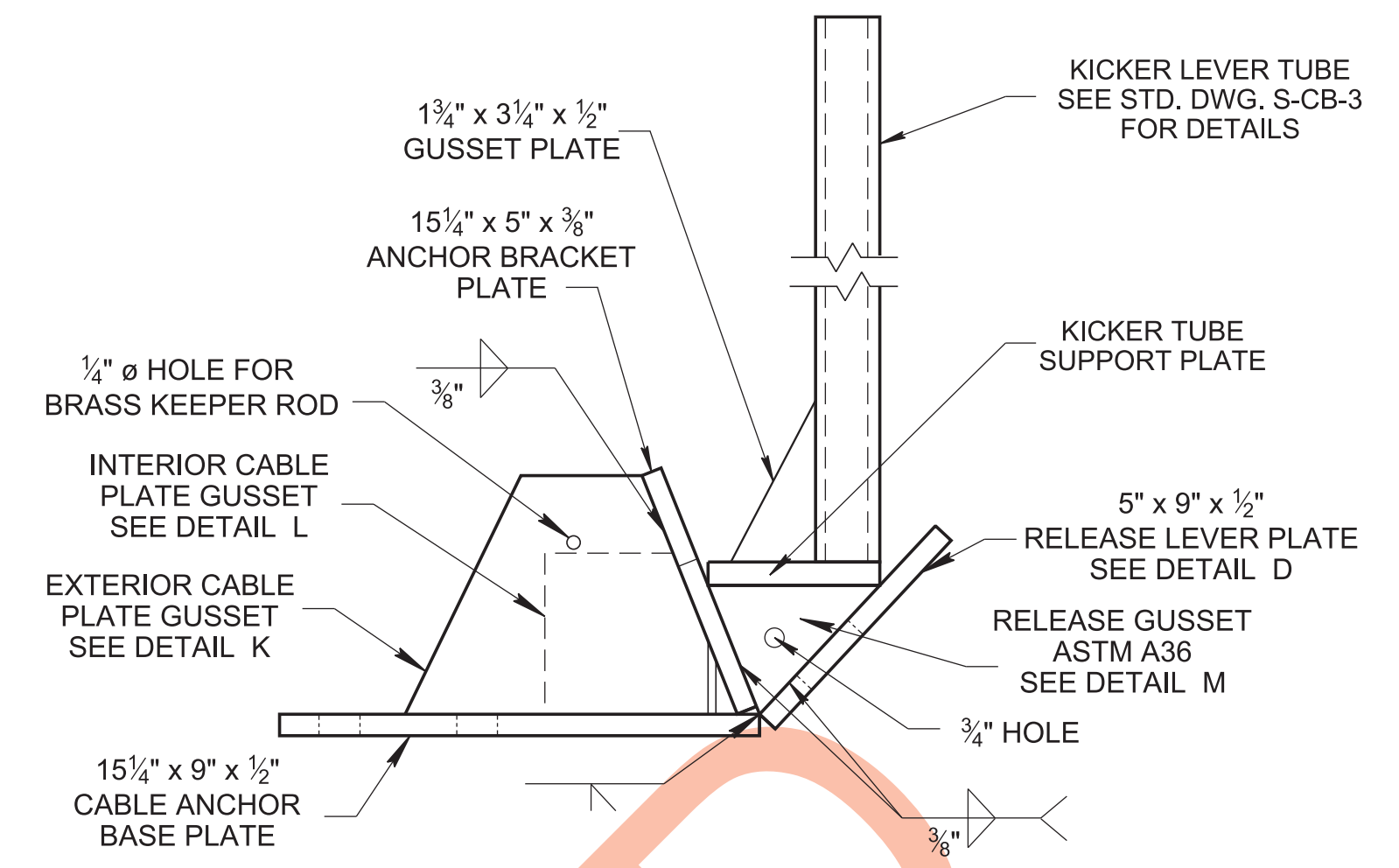


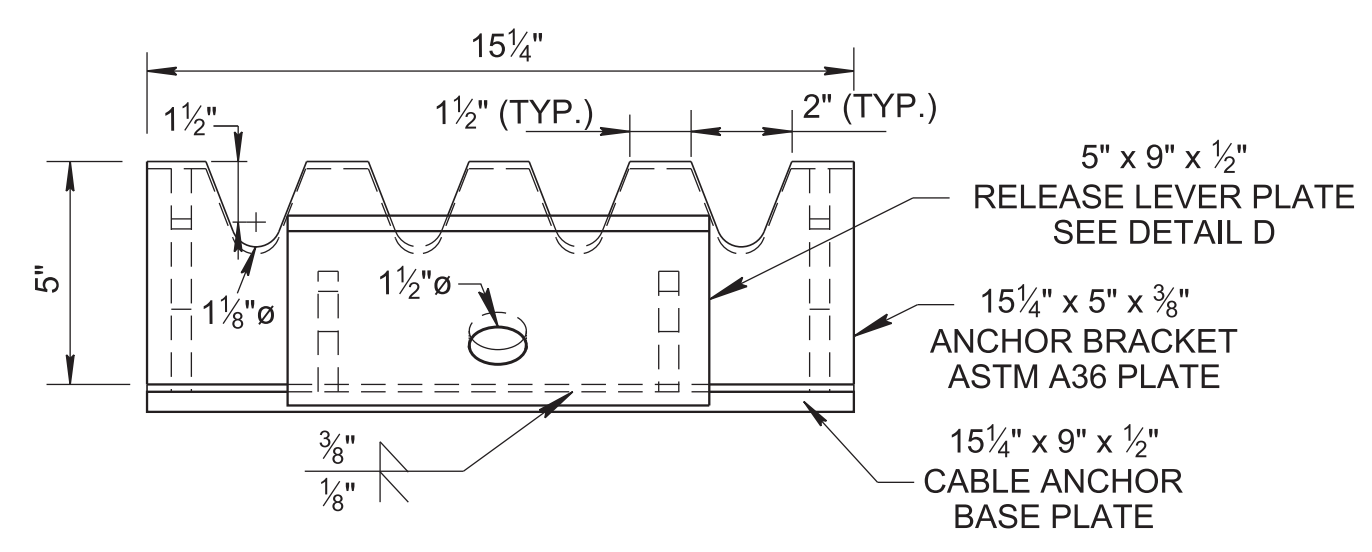
7/16/2021 11:29:14 AM
 P:\StandDraw\DESIGN STANDARDS\Standards Library\Standard Roadway Drawings - CURRENT\In Progress\10-106.00 Safety Design and Guardrails IP\106.02 Cable Barrier IP\SCB3A-20210603.dgn



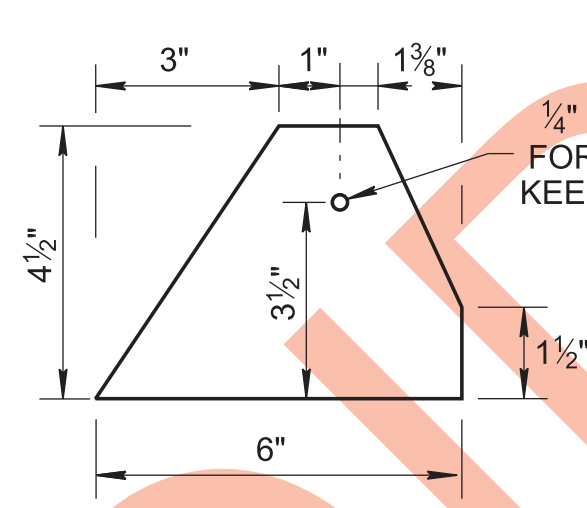
PLAN VIEW



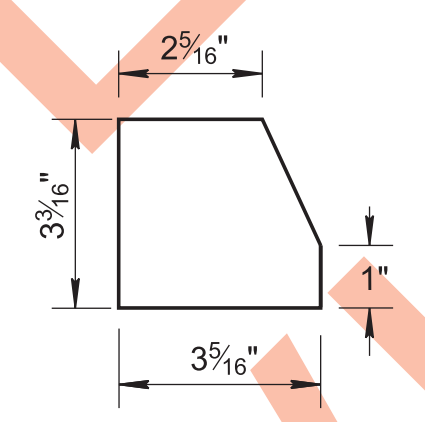
SECTION G-G



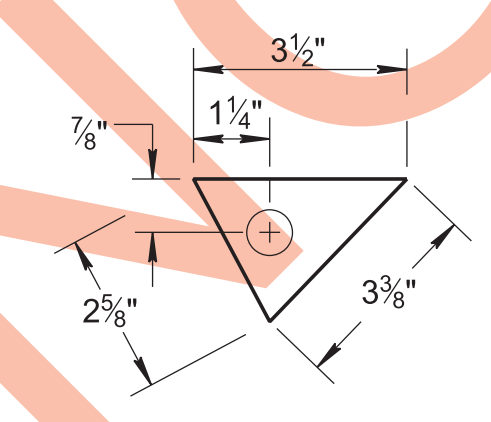
ELEVATION VIEW



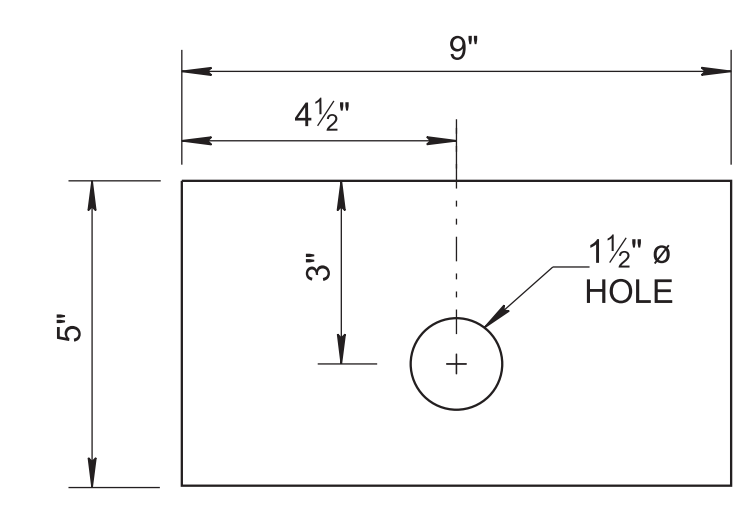
DETAIL K
1/2" THICK EXTERIOR
CABLE PLATE GUSSET



DETAIL L
1/2" THICK INTERIOR
CABLE PLATE GUSSET

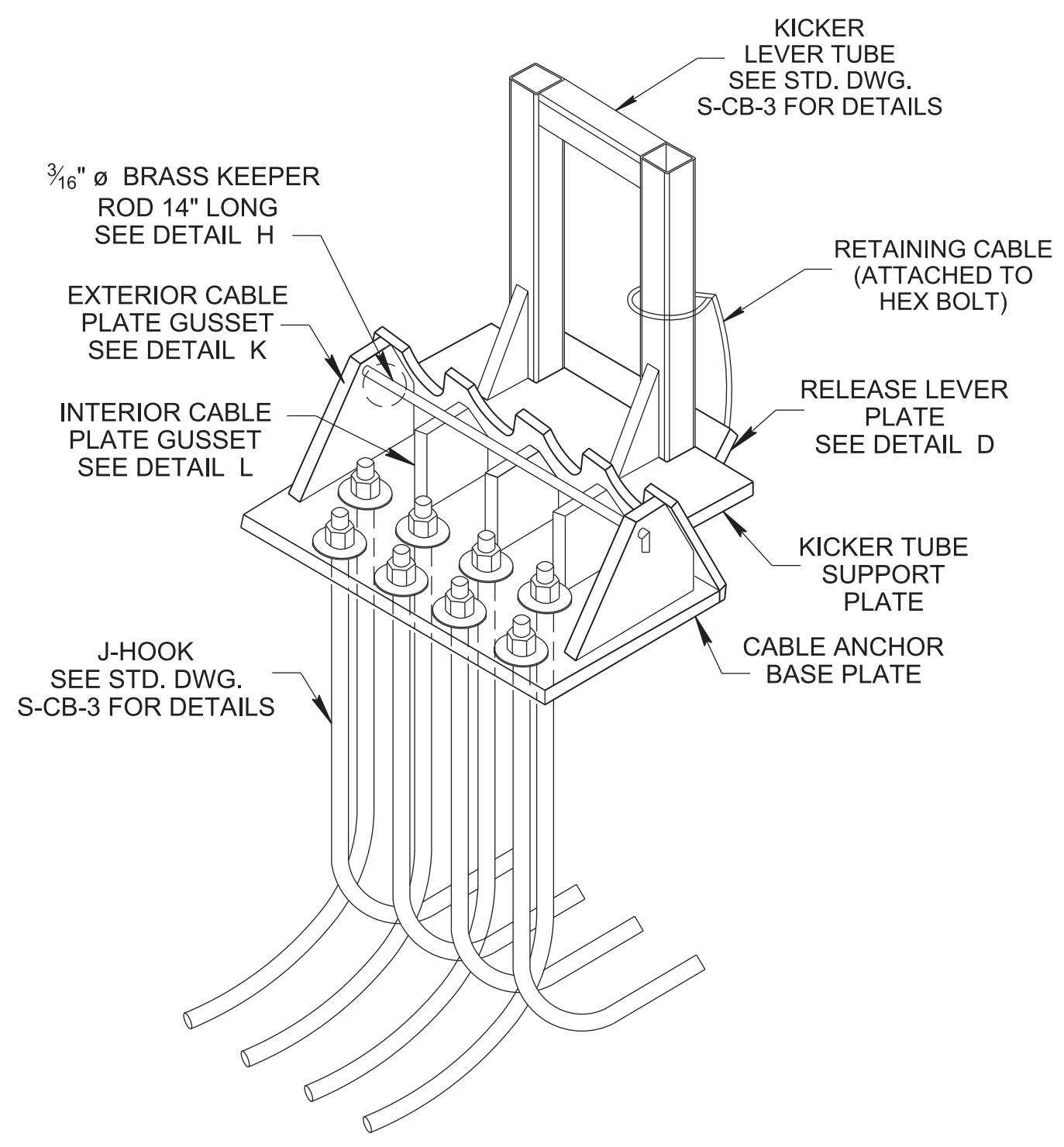


DETAIL M
1/2" THICK
RELEASE GUSSET

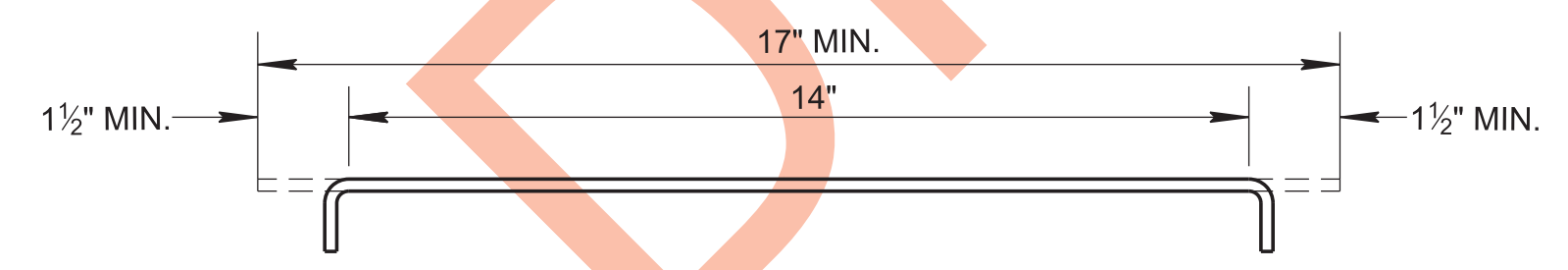


DETAIL D
1/2" THICK
RELEASE LEVER PLATE

CABLE ANCHOR BRACKET COMPONENT DETAILS



ISOMETRIC VIEW



DETAIL H
3/16" Ø BRASS KEEPER ROD
TO BE BENT IN THE FIELD

(Note: brass rod to be placed after all cables are installed and tensioned. Slide rod through the 1/4" hole in anchor bracket, leaving a minimum of 1 1/2" on each side of the anchor bracket. Bend brass rod down on each side of anchor bracket to secure.)

GENERAL NOTES

- (A) ALL TUBES SHALL BE ASTM A500 GRADE B AND SHALL BE GALVANIZED. ALL BOLTS, NUTS AND WASHERS SHALL BE GALVANIZED AND ALL STEEL PLATES SHALL CONFORM TO ASTM A36. ALL CABLE ANCHORS SHALL BE GALVANIZED FOLLOWING FABRICATION. ALL CUTTING, DRILLING, AND WELDING OF STEEL COMPONENTS SHALL BE DONE BEFORE GALVANIZED.
- (B) ALL WELDING SHALL BE PERFORMED BY A WELDER QUALIFIED IN ACCORDANCE WITH THE AASHTO/AWS D1.5M/D1.5 BRIDGE WELDING CODE (LATEST EDITION).
- (C) REFER TO STANDARD DRAWINGS S-CB-2, S-CB-3, S-CB-4 AND S-CB-5 FOR ADDITIONAL DETAILS.
- (D) THE DETAILS SHOWN ON THIS DRAWING ARE BASED ON RESULTS OF FULL SCALE CRASH TESTS TO MASH TEST 3-11. REFER TO ENGINEER SHOP DRAWINGS FOR DETAILS NOT SHOWN ON THIS DRAWING.
- (E) PAYMENT:
FURNISHING AND INSTALLING CONCRETE ANCHOR FOUNDATIONS, POSTS, POST ASSEMBLIES, SQUARE TUBES, HARDWARE INCLUDING THREADED RODS, NUTS AND BOLTS, WASHERS AND ALL PLATES SHALL BE PAID UNDER ITEM NUMBER 705-06.41 CABLE BARRIER ANCHOR (MASH TL-3) EACH.

STATE OF TENNESSEE
 STANDARD
 DRAWING
DEPARTMENT OF TRANSPORTATION

**CABLE BARRIER
 ANCHOR
 BRACKET
 DETAILS**