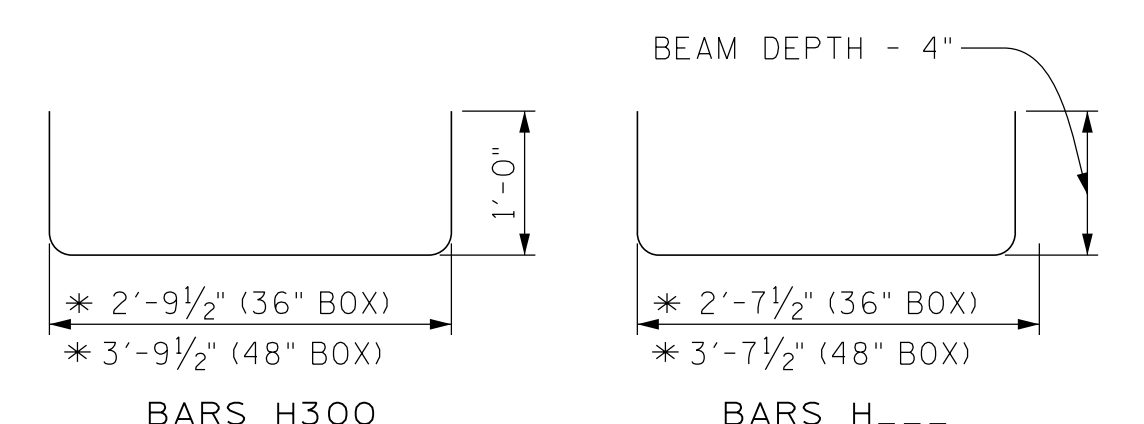
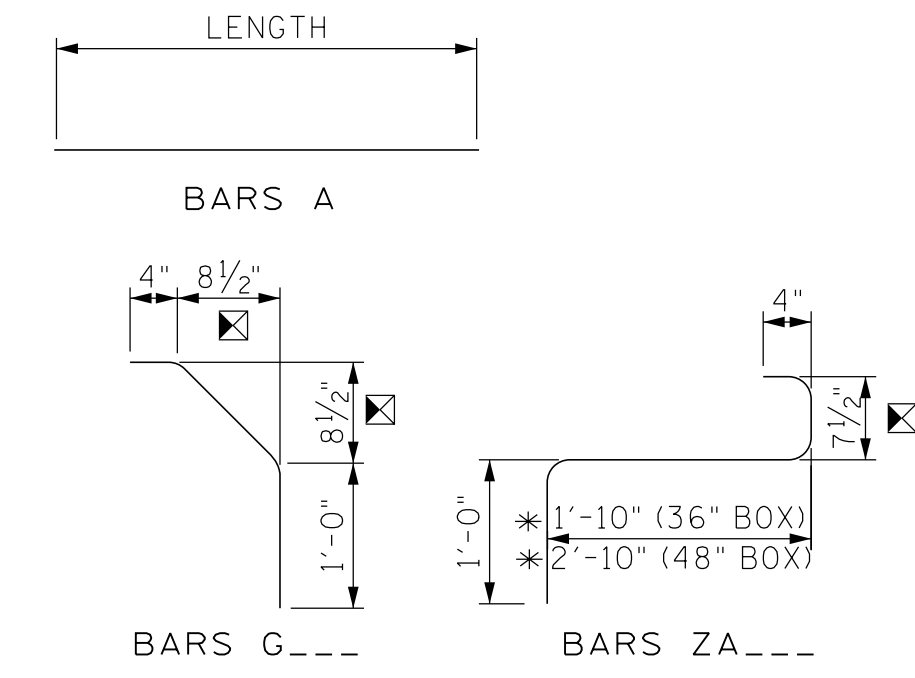
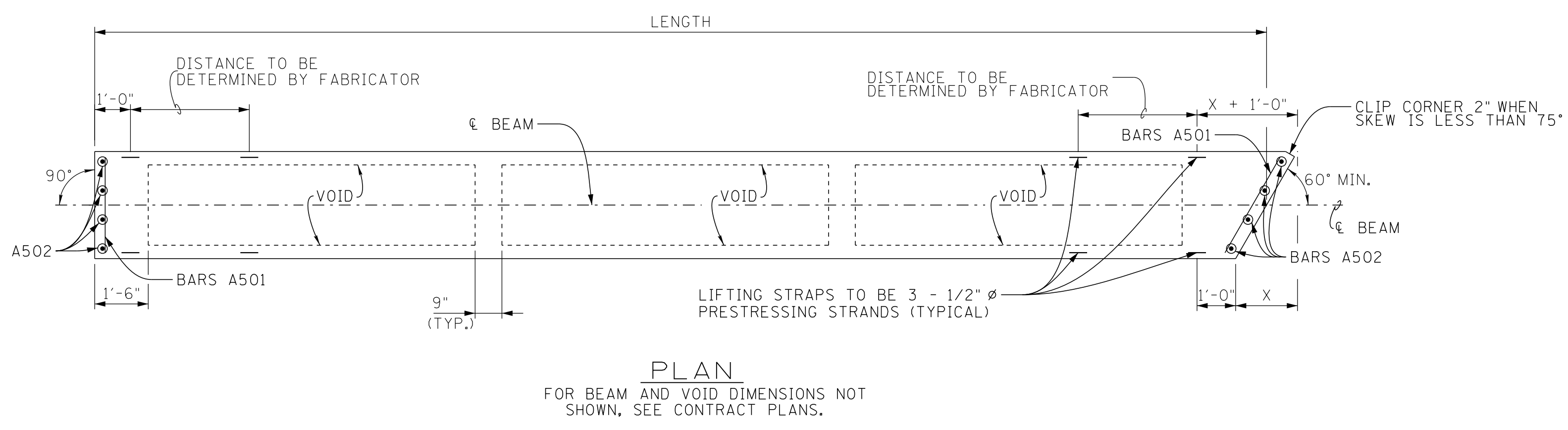
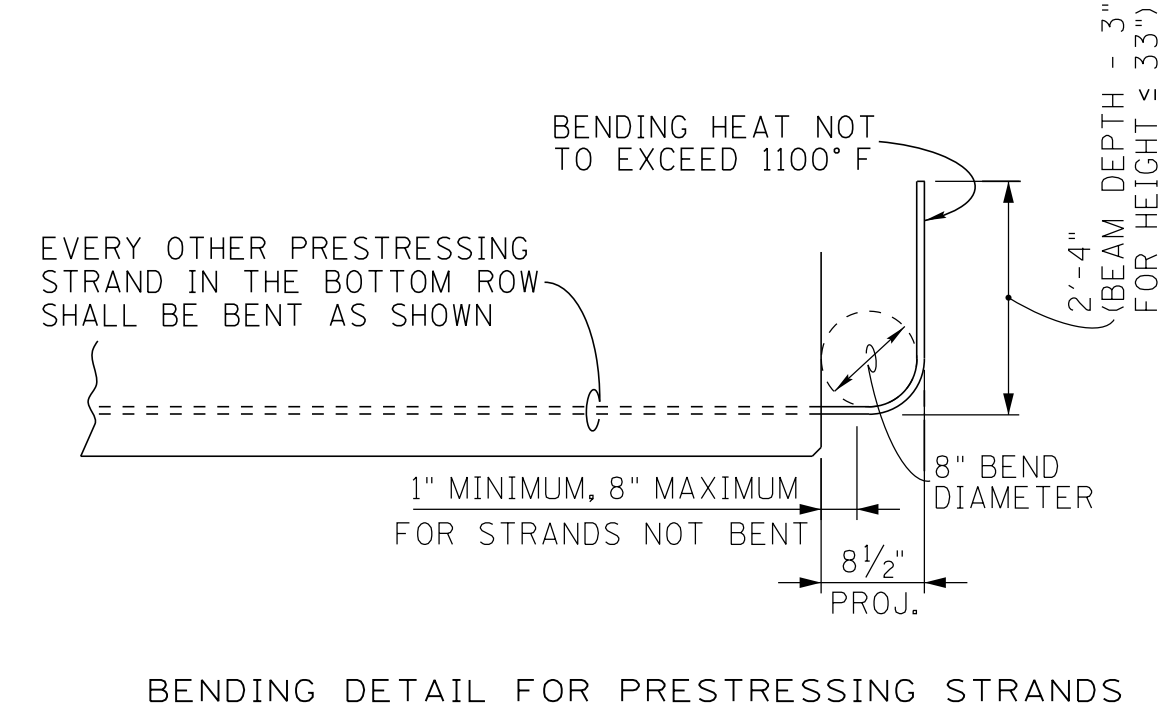
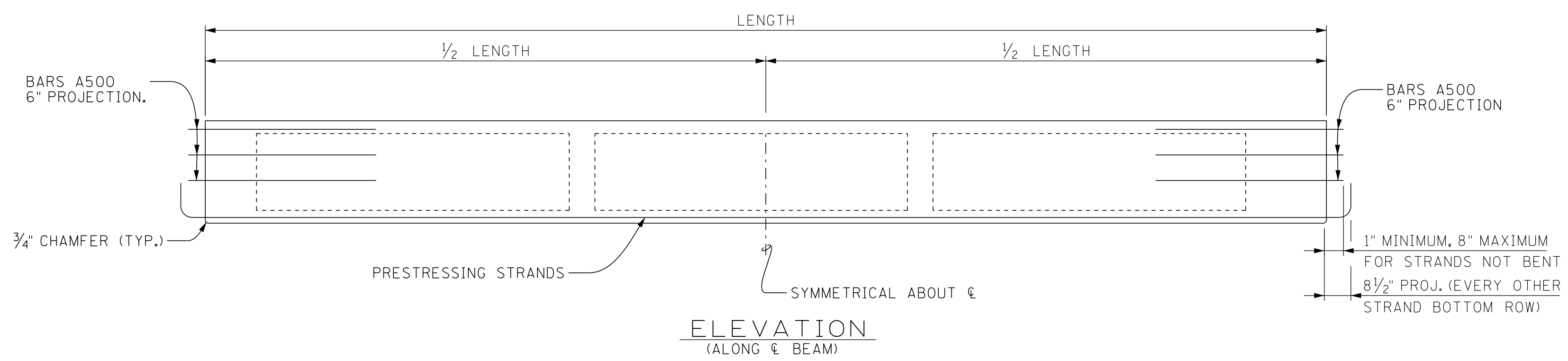
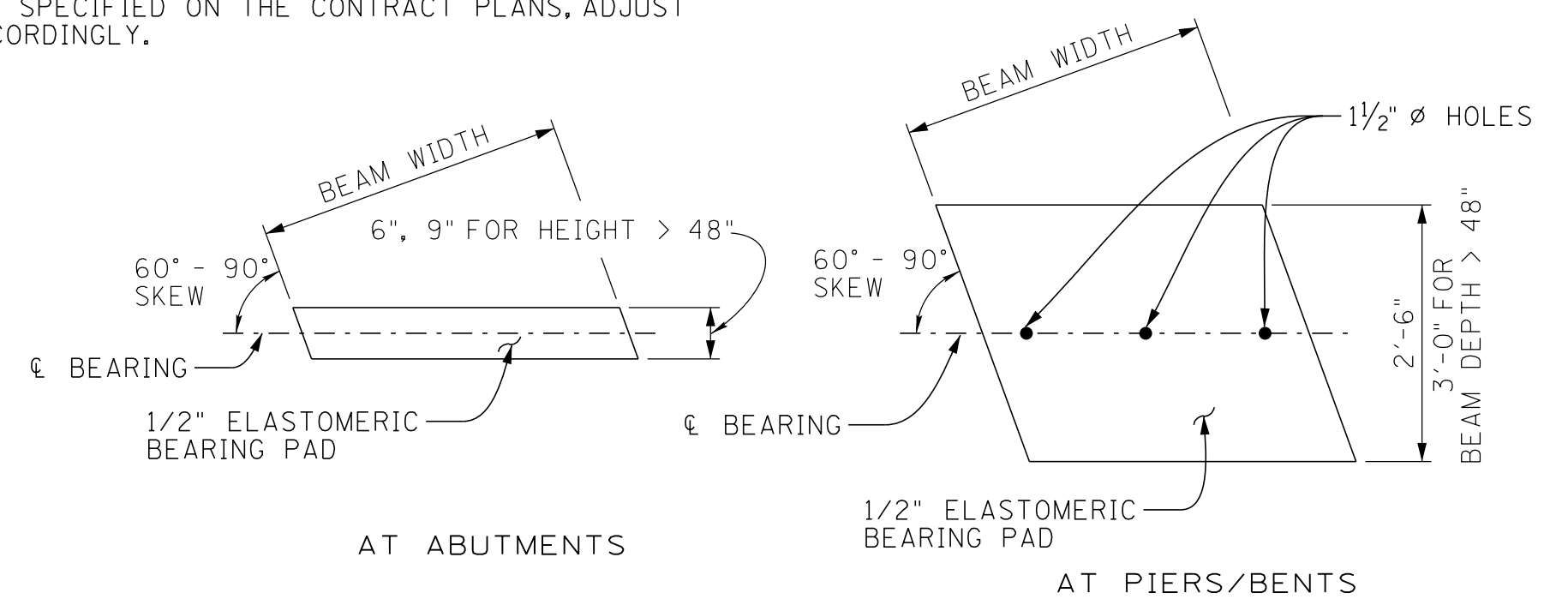
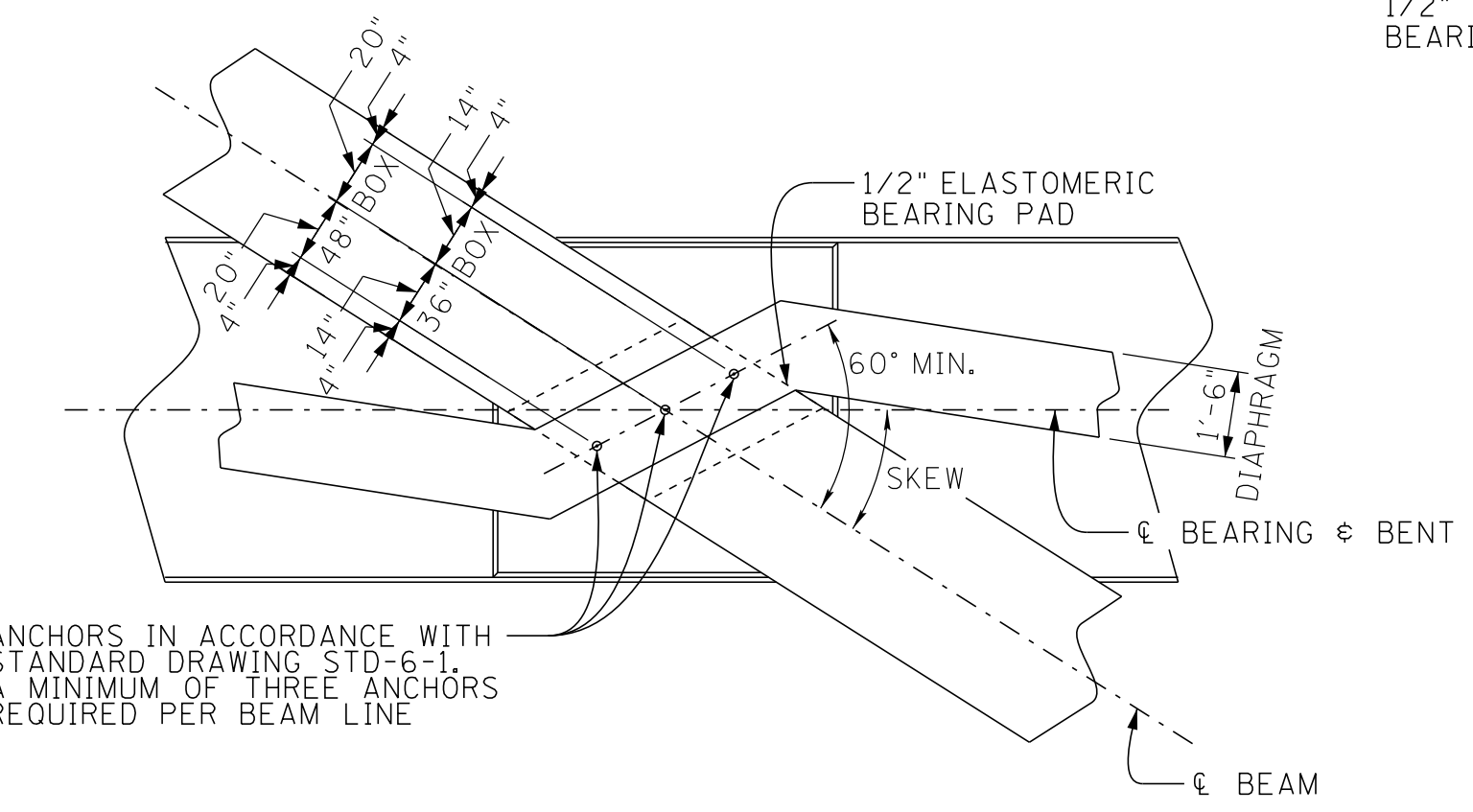
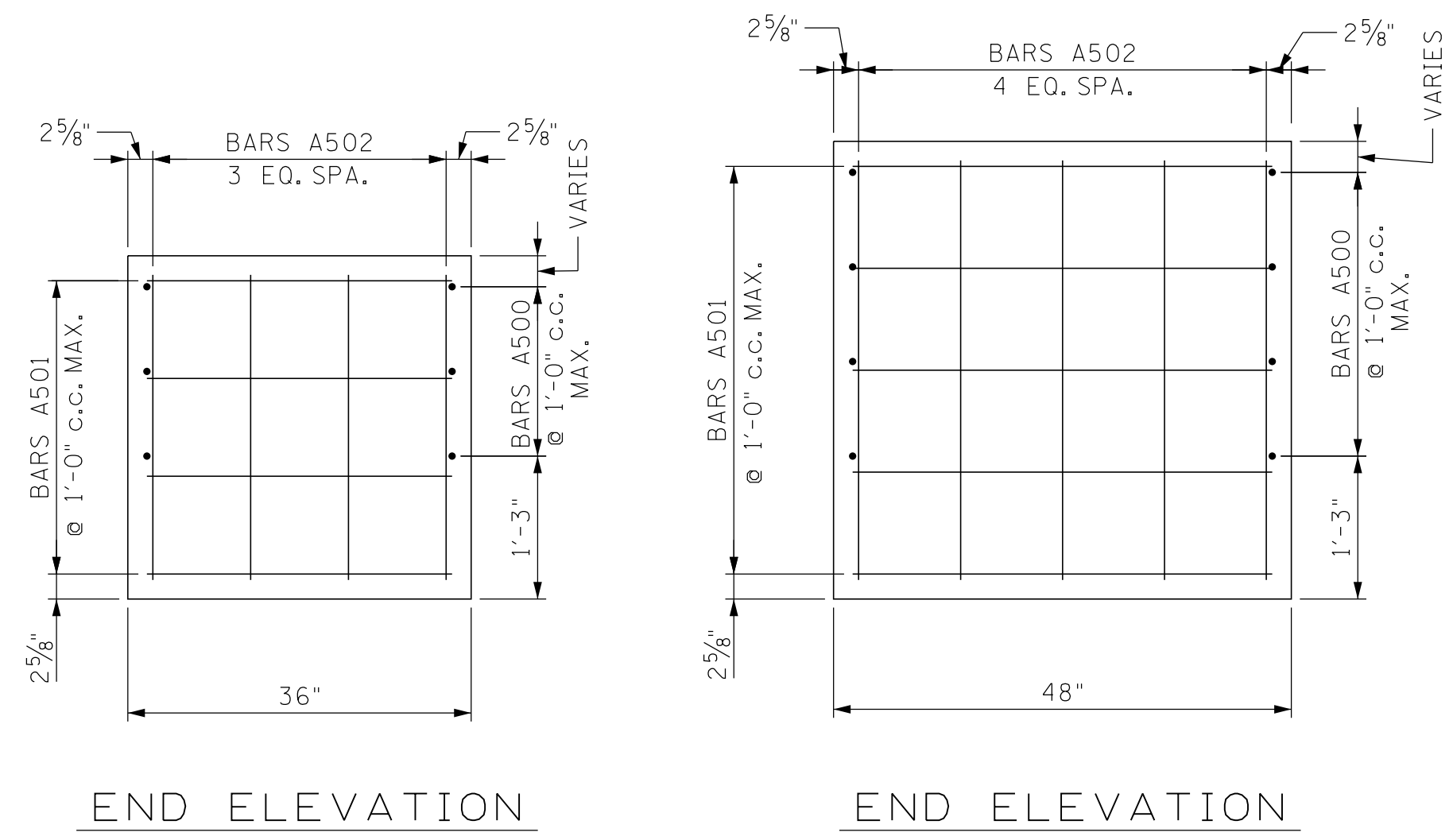


PROJECT NO.	YEAR	SHEET NO.	
	2020		
REVISIONS			
NO.	DATE	BY	BRIEF DESCRIPTION
1	3-6-24	ALP	GENERAL REVISIONS



\* NOTE: BENDING DIMENSIONS ARE SHOWN FOR 90° SKEW. ADJUST FOR 75° - 90° SKEWS AND FOR FLARED BARS WITH 60° - 75° SKEWS.  
 ☒ DENOTES: DIMENSIONS BASED ON 5" PROJECTION. IF A LARGER PROJECTION IS SPECIFIED ON THE CONTRACT PLANS, ADJUST DIMENSION ACCORDINGLY.

- BEAM NOTES:**
- 1) THE TOP OF ALL BEAMS ARE TO BE ROUGH FLOATED AT APPROXIMATELY THE TIME OF INITIAL SET. THE TOP OF THE BEAMS SHALL BE CLEAN, FREE OF LAITANCE, AND INTENTIONALLY ROUGHENED IN THE TRANSVERSE DIRECTION TO AN AMPLITUDE OF 1/4".
  - 2) MILD STEEL REINFORCEMENT SHALL BE ASTM A615 GRADE 60.
  - 3) ALL PRESTRESSING STRANDS SHALL BE ASTM A416 GRADE 270 7-WIRE UNCOATED LOW RELAXATION PRESTRESSING STRANDS.
  - 4) AN INITIAL FORCE AS SPECIFIED IN THE CONTRACT PLANS SHALL BE APPLIED TO EACH STRAND IN ALL BEAMS.
  - 5) AFTER THE BEAM IS REMOVED FROM THE PRESTRESSING BED, BARS PROJECTING FROM THE ENDS OF THE BEAM SHALL BE COLD BENT (DO NOT HEAT). THE MINIMUM DIAMETER OF THE BEND SHALL BE IN ACCORDANCE WITH STANDARD CRSI HOOK DETAILS.
  - 6) THE PRESTRESSING STRANDS SHALL BE LEFT PROJECTING AS SHOWN IN THE BENDING DETAILS FROM THE ENDS OF THE BEAMS. THE STRANDS SHALL BE CUT WITHOUT HEATING ADJACENT STRANDS. THERE SHALL NOT BE ANY PROTECTIVE COATING PLACED ON THE ENDS OF THE BEAM OR ON THE PROJECTING STRANDS.
  - 7) COST OF ELASTOMERIC BEARING PADS AND RUBBER BONDING CEMENT TO BE INCLUDED IN THE COST OF THE PRESTRESSED BEAMS.
  - 8) THE SEQUENCE FOR TRANSFER OF STRESS OR THE CUTTING OF STRANDS SHALL BE IN ACCORDANCE WITH ARTICLE 615.14 OF THE "STANDARD SPECIFICATIONS FOR ROAD AND BRIDGE CONSTRUCTION" AND SHALL BE SHOWN ON THE APPROVED SHOP DRAWINGS. AT NO TIME SHALL MORE THAN 1/6 OF THE TOTAL PRESTRESSING FORCE BE ECCENTRIC ABOUT THE CENTERLINE OF THE BEAM.
  - 9) 1" DIA. WEEP HOLES SHALL BE PROVIDED AT THE LOW POINT OF EACH CELL. VENT HOLES SHALL BE PROVIDED IN THE TOP OF EACH CELL DURING FABRICATION TO RELIEVE GAS PRESSURES THAT OCCUR DURING CURING. THE VENT HOLES SHALL BE PLUGGED AFTER CURING IS COMPLETE.



USE 1/2" THICK ELASTOMERIC BEARING PADS UNLESS SHOWN OTHERWISE ON THE CONTRACT PLANS.

ANCHORS IN ACCORDANCE WITH STANDARD DRAWING STD-6-1. A MINIMUM OF THREE ANCHORS REQUIRED PER BEAM LINE

STATE OF TENNESSEE  
DEPARTMENT OF TRANSPORTATION  
**1** STANDARD DETAILS  
FOR  
PRESTRESSED  
BOX BEAMS  
2020

PIN NO.: \_\_\_\_\_  
 DESIGN BY: ALP DATE: //  
 DRAWN BY: KDM DATE: //  
 SUPERVISED BY: TAK DATE: //  
 CHECKED BY: TAK DATE: //

CORRECT *Del A Krivogay*  
ENGINEER OF STRUCTURES