

TRAUMATIC BRAIN INJURY IN TENNESSEE

OVERVIEW OF TN REGISTRY PATIENTS IN 2021



7,838
PATIENTS WERE REPORTED TO THE REGISTRY WITH A TBI



32%

PATIENTS DISCHARGED FROM THE HOSPITAL REQUIRED EXTENDED CARE



64%

TBIs OCCURRED IN PATIENTS OVER 50 YEARS OF AGE



88%

TBI PATIENTS WERE DISCHARGED FROM THE HOSPITAL ALIVE



76% TBI PATIENTS WERE TENNESSEE RESIDENTS



60% PATIENTS WERE MALE

ETHNIC MINORITIES SUSTAIN A TBI AT A YOUNGER AGE



HISPANIC



NON HISPANIC BLACK



NON HISPANIC WHITE

THE AVERAGE AGE OF **HISPANIC AND NON HISPANIC BLACK** TBI REGISTRY PATIENTS WAS AT LEAST **14 YEARS YOUNGER** THAN NON HISPANIC WHITE TBI REGISTRY PATIENTS.

WORK-RELATED TBI

51%

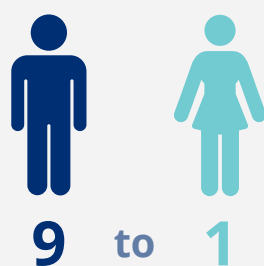
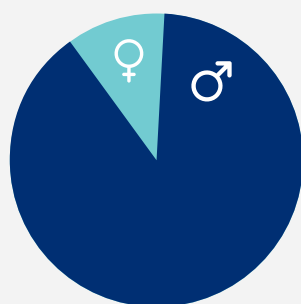
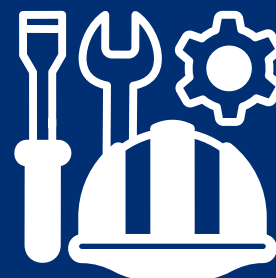
MOST WORK-RELATED INJURIES WERE SKULL FRACTURES

52%

WORK-RELATED INJURIES WERE DUE TO UNINTENTIONAL FALLS

69%

MOST WORK-RELATED INJURIES WERE MODERATE



FOR TBI REGISTRY PATIENTS WITH WORK-RELATED INJURIES, THERE WERE NINE MALES TO EVERY ONE FEMALE

6%

HISPANIC

1%

NH BLACK

1%

NH WHITE

HISPANIC PATIENTS HAD THE HIGHEST NUMBER OF WORK-RELATED INJURIES, COMPARED TO NON HISPANIC BLACK AND NON HISPANIC WHITE PATIENTS

IN 2021, 190 OR 2% OF TBIs WERE WORK-RELATED

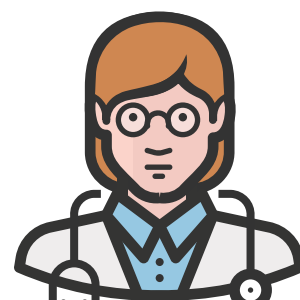
TBI OUTREACH INITIATIVES ARE NEEDED FOR MINORITY PATIENTS



NON-HISPANIC BLACKS HAD THE HIGHEST RATE OF TBI IN 2020



HISPANICS HAVE THE HIGHEST PORTION OF WORK-RELATED TBI IN TENNESSEE



OUT OF 139 PROVIDERS SURVEYED, ONLY 37% REPORTED SERVING MINORITY PATIENTS

TBI RESOURCES

TBI PROGRAM

<https://www.tn.gov/health/health-program-areas/fhw/vipp/tbi.html>



SERVICE COORDINATION

<https://www.tn.gov/health/health-program-areas/fhw/vipp/tbi/support-groups.html>

TRAUMATIC BRAIN INJURY (TBI) HOTLINE

1-800-882-0611

TN

Department of Health



Department of Health Authorization No. 355988. This Electronic publication was promulgated at zero cost. August 2023