



2015

DRIVE YOUR COUNTY TO THE TOP TEN:

Accelerating Action Towards Improving County Health

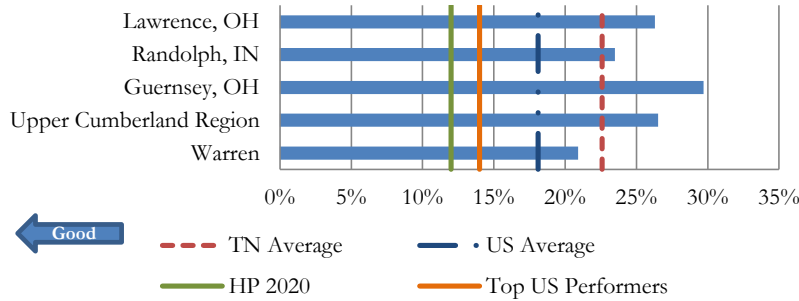
Warren County



Demographics

Population:	39,965	<18 YOA:	23.85%	65+ YOA:	16.42%	% Rural:	61.38%
Unemployment:	9.20%	% Females:	50.60%	% Males:	49.40%	Graduation Rate:	92.00
Single parent households:	33.83%	MHI:	\$36,327				

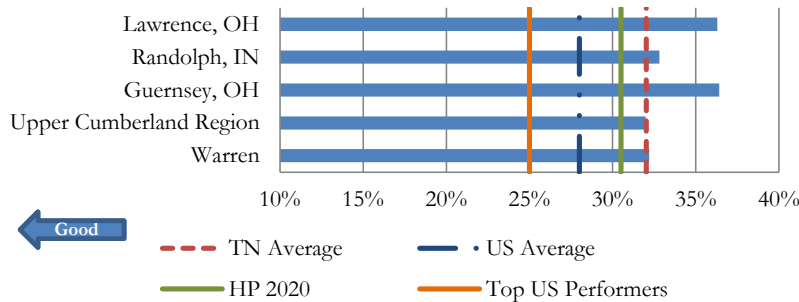
Adult Smoking



Top Third

Measure	Value
Diabetic Monitoring	88.96%
Adult Smoking	20.90%
Physical Inactivity	30.70%
Long Commute - Driving Alone	26.90%
Driving Alone to Work	82.20%
Mammography Screening	63.64%
Access to Exercise Opportunities	69.94%
Severe Housing Problems	12.43%
Primary Care Physicians	1897:1
Mental Health Providers	1537:1

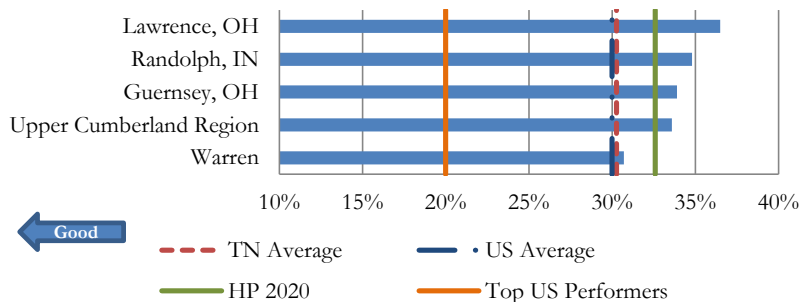
Adult Obesity



Middle Third

Measure	Value
Dentists	2664:1
Food Environment Index	7.40
Social Associations	11.80
Low Birthweight	8.55%
High School Graduation	92.00%
Income Inequality	4.50
Violent Crime	335.01
Adult Obesity	32.20%
Unemployment	9.20%
Children in Poverty	29.00%

Physical Inactivity



Bottom Third

Measure	Value
Uninsured	19.81%
Drinking Water Violations	14.01%
Alcohol-Impaired Driving Deaths	44.00%
Teen Births	62.11
Poor Physical Health Days	5.80
Poor or Fair Health	26.50%
Poor Mental Health Days	4.90
Some College	38.86%
Sexually Transmitted Infections	404.10
Preventable Hospital Stays	104.67

YOA: Years of Age. MHI: Median Household Income. HP 2020: Healthy People 2020 Goal. Adult Smoking: Percentage of adults who are current smokers. Source: Behavioral Risk Factor Surveillance System; 2006-2012. Adult Obesity: Percentage of adults that report a BMI of 30 or more. Source: CDC Diabetes Interactive Atlas; 2011. Physical Inactivity: Percentage of adults aged 20 and over reporting no leisure-time physical activity. Source: CDC Diabetes Interactive Atlas; 2011. Prepared by the Division of Policy, Planning and Assessment, Office of Performance Management, Tennessee Department of Health. Nashville, TN. opm.health@tn.gov or 615-741-5001.



Health Outcomes	Length of Life	Health Outcomes								
		Rank	10th Ranked	Value	10th Ranked Value	Difference	Shift in Value	US Average	Peer County	Peer Value
Health Outcomes	Premature Death Years of potential life lost before age 75 per 100,000 population (age-adjusted)	51	Lewis	10068.36	7769.75	2298.61	↑Bad ↓Good	6,811.00	Guernsey, OH	8186.66
		For every 100 people in the county, 1 people in the county need to live one year closer to age 75.							Randolph, IN	7617.48
		Source	National Center for Health Statistics - Mortality files		Year(s)	2010-2012		Lawrence, OH	9705.35	
	Poor or Fair Health Percentage of adults reporting fair or poor health (age-adjusted)	70	Putnam	26.50%	16.60%	9.90%	↑Bad ↓Good	12.40%	Guernsey, OH	15.40%
		Improve the health of 10 out of every 100 people in the county who, in general, report being in poor or fair health.							Randolph, IN	20.10%
		Source	Behavioral Risk Factor Surveillance System		Year(s)	2006-2012		Lawrence, OH	27.90%	
	Poor Physical Health Days* Average number of physically unhealthy days reported in past 30 days (age-adjusted)	72	Chester	5.80	3.40	2.40	↑Bad ↓Good	3.70	Guernsey, OH	4.20
		Engage people in the county on ways to reduce number of poor physical health days reported by residents by 3 days per month.							Randolph, IN	5.00
		Source	Behavioral Risk Factor Surveillance System		Year(s)	2006-2012		Lawrence, OH	7.10	
	Poor Mental Health Days Average number of mentally unhealthy days reported in past 30 days (age-adjusted)	70	Henderson	4.90	2.80	2.10	↑Bad ↓Good	3.50	Guernsey, OH	4.40
		Engage people in the county on ways to reduce number of poor physical health days reported by residents by 3 days per month.							Randolph, IN	3.60
		Source	Behavioral Risk Factor Surveillance System		Year(s)	2006-2012		Lawrence, OH	6.10	
Low Birthweight Percentage of live births with low birthweight (< 2500 grams)	39	Lewis	8.55%	7.29%	1.26%	↑Bad ↓Good	8.10%	Guernsey, OH	8.32%	
	Reduce the number of low birth weight babies by 2 for every 100 live births.							Randolph, IN	8.35%	
	Source	National Center for Health Statistics - Natality files		Year(s)	2006-2012		Lawrence, OH	10.89%		
Health Factors	Adult Smoking Percentage of adults who are current smokers	17	Knox	20.90%	18.50%	2.40%	↑Bad ↓Good	18.10%	Guernsey, OH	29.70%
		Get 12 out of every 100 current adult smokers in the county to quit smoking.							Randolph, IN	23.50%
		Source	Behavioral Risk Factor Surveillance System		Year(s)	2006-2012		Lawrence, OH	26.30%	
	Adult Obesity Percentage of adults that report a BMI of 30 or more	47	Hamilton	32.20%	29.10%	3.10%	↑Bad ↓Good	28.00%	Guernsey, OH	36.40%
		Get 10 out of every 100 current obese adults in the county to reduce their BMI below 30.							Randolph, IN	32.80%
		Source	CDC Diabetes Interactive Atlas		Year(s)	2011		Lawrence, OH	36.30%	
	Food Environment Index Index of factors that contribute to a healthy food environment, 0 (worst) to 10 (best)	34	Williamson	7.40	8.9	1.5	↑Good ↓Bad	7.60	Guernsey, OH	7.20
		Increase the county's food index score by 1.5.							Randolph, IN	6.90
		Source	USDA Food Environment Atlas, Map the Meal Gap		Year(s)	2012		Lawrence, OH	7.30	

Prepared by the Division of Policy, Planning and Assessment, Office of Performance Management, Tennessee Department of Health, Nashville, TN. April 2015. opm.health@tn.gov or 615-741-5001. The full report can be accessed at: <http://health.tn.gov/statistics/specialprojects.htm>. All data is from the University of Wisconsin Population Health Institute and Robert Wood Johnson Foundation's, 2015 *County Health Rankings and Roadmaps* report. Difference statements represent the absolute value using the following formula: ["Value" - "10th Ranked Value"]. The action statements are based on the assumption that no new additional cases occur. All rankings and action statements presented in this report must be interpreted with caution due to various limitations of each measurement. Further information with regards to the strengths and limitations of each measurement may be found by clicking the hyperlink found in the description of each measurement.

Health Factors

Health Behaviors

Physical Inactivity	Rank	10th Ranked	Value	10th Ranked Value	Difference	Shift in Value	US Average	Peer County	Peer Value
	18	Wilson	30.70%	28.50%	2.20%	↑Bad ↓Good	30.00%	Guernsey, OH	33.90%
Percentage of adults aged 20 and over reporting no leisure-time physical activity	Get 8 out of every 100 currently physically inactive adults to exercise during leisure time.							Randolph, IN	34.80%
Source	CDC Diabetes Interactive Atlas			Year(s)	2011		Lawrence, OH	36.50%	
Access to Exercise Opportunities	Rank	10th Ranked	Value	10th Ranked Value	Difference	Shift in Value	US Average	Peer County	Peer Value
	23	Loudon	69.94%	78.50%	8.56%	↑Good ↓Bad	77.00%	Guernsey, OH	48.47%
Percentage of population with adequate access to locations for physical activity	Consider how to remove barriers to access exercise locations to reach an additional 8.56 percent of the county's population.							Randolph, IN	32.15%
Source	Business Analyst, Delorme, ESRI, & US Census Tigerline Files			Year(s)	2010 & 2013		Lawrence, OH	95.51%	
Excessive Drinking	Rank	1st Ranked	Value	1st Ranked Value	Difference	Shift in Value	US Average	Peer County	Peer Value
	NA	Greene	NA	3.30%	NA	↑Bad ↓Good	15.00%	Guernsey, OH	13.80%
Percentage of adults reporting binge or heavy drinking	No information available							Randolph, IN	16.00%
Source	Behavioral Risk Factor Surveillance System			Year(s)	2006-2012		Lawrence, OH	13.30%	
Alcohol-Impaired Driving Deaths	Rank	10th Ranked	Value	10th Ranked Value	Difference	Shift in Value	US Average	Peer County	Peer Value
	86	McNairy	44.00%	18.75%	25.25%	↑Bad ↓Good	32.00%	Guernsey, OH	33.33%
Percentage of driving deaths with alcohol involvement	Reduce the number of alcohol related driving deaths by 25.25 percent.							Randolph, IN	17.65%
Source	Fatality Analysis Reporting System			Year(s)	2009-2013		Lawrence, OH	35.29%	
Sexually Transmitted Infections	Rank	10th Ranked	Value	10th Ranked Value	Difference	Shift in Value	US Average	Peer County	Peer Value
	69	Scott	404.10	144.30	259.80	↑Bad ↓Good	458.00	Guernsey, OH	268.70
Number of newly diagnosed chlamydia cases per 100,000 population	Consider ways to educate 7 out of every 10 persons self-reporting to be involved in any sexual contact to commit to using safe sex practices to prevent the infection of Chlamydia.							Randolph, IN	232.40
Source	National Center for HIV/AIDS, Viral Hepatitis, STD, & TB Prevention			Year(s)	2012		Lawrence, OH	215.70	
Teen Births	Rank	10th Ranked	Value	10th Ranked Value	Difference	Shift in Value	US Average	Peer County	Peer Value
	83	Putnam	62.11	37.04	25.07	↑Bad ↓Good	31.00	Guernsey, OH	40.89
Teen birth rate per 1,000 female population, ages 15-19	For every 100 teenage females (ages 15 to 19 years) in the county, consider ways to prevent 41 teen(s) from becoming pregnant.							Randolph, IN	45.17
Source	National Center for Health Statistics - Natality files			Year(s)	2006-2012		Lawrence, OH	48.78	

Clinical Care

Uninsured	Rank	10th Ranked	Value	10th Ranked Value	Difference	Shift in Value	US Average	Peer County	Peer Value
	92	Blount	19.81%	14.64%	5.17%	↑Bad ↓Good	18.00%	Guernsey, OH	14.71%
Percentage of population under age 65 without health insurance	Get 27 out of every 100 currently uninsured adults ages 18-64 to obtain health insurance.							Randolph, IN	17.78%
Source	Small Area Health Insurance Estimates			Year(s)	2012		Lawrence, OH	14.06%	
Primary Care Physicians	Rank	10th Ranked	Value	10th Ranked Value	Difference	Shift in Value	US Average	Peer County	Peer Value
	29	Anderson	1897:1	1397:1	500	↑Bad ↓Good	1,355.00	Guernsey, OH	1991:1
Ratio of population to primary care physicians	To reach a population-to-provider ratio at or exceeding that of the 10th ranking county, 8 primary care providers would need to be recruited to the county. More importantly, if the county's value is greater than 3,500, this county would be considered a Health Professional Shortage Area.							Randolph, IN	4303:1
Source	Area Health Resource File/American Medical Association			Year(s)	2012		Lawrence, OH	2142:1	
Dentists	Rank	10th Ranked	Value	10th Ranked Value	Difference	Shift in Value	US Average	Peer County	Peer Value
	32	Maury	2664:1	1675:1	989	↑Bad ↓Good	1,663.00	Guernsey, OH	2086:1
Ratio of population to dentists	To reach a population-to-provider ratio at or exceeding that of the 10th ranking county, 9 dental care providers would need to be recruited to the county. More importantly, if the county's value is greater than 5,000, this county would be considered a Health Professional Shortage Area.							Randolph, IN	5125:1
Source	Area Health Resource File/American Medical Association			Year(s)	2013		Lawrence, OH	3642:1	

Health Factors	Clinical Care	Mental Health Providers	Rank	10th Ranked	Value	10th Ranked Value	Difference	Shift in Value	US Average	Peer County	Peer Value
		Ratio of population to mental health providers	29	McNairy	1537:1	688:1	849	↑Bad ↓Good	753	Guernsey, OH	1132:1
To reach a population-to-provider ratio at or exceeding that of the 10th ranking county, 33 mental health providers would need to be recruited to the county. More importantly, if the county's value is greater than 30,000, this county would be considered a Health Professional Shortage Area.								Randolph, IN	4271:1		
Source	CMS, National Provider Identification file			Year(s)	2014		Lawrence, OH	2135:1			
Preventable Hospital Stays Number of hospital stays for ambulatory-care sensitive conditions per 1,000 Medicare enrollees	Rank	10th Ranked	Value	10th Ranked Value	Difference	Shift in Value	US Average	Peer County	Peer Value		
	69	Marshall	104.67	58.47	46.20	↑Bad ↓Good	65.00	Guernsey, OH	116.49		
	For every 100 Medicare enrollees, prevent 1 Medicare enrollees from being hospitalized for ambulatory-care sensitive conditions.								Randolph, IN	80.22	
Source	Dartmouth Atlas of Health Care			Year(s)	2012		Lawrence, OH	91.63			
Diabetic Monitoring Percentage of diabetic Medicare enrollees ages 65-75 that receive HbA1c monitoring	Rank	5th Ranked	Value	5th Ranked Value	Difference	Shift in Value	US Average	Peer County	Peer Value		
	9	Sullivan	88.96%	89.89%	0.94%	↑Good ↓Bad	84.00%	Guernsey, OH	78.74%		
	For every 100 diabetic Medicare enrollees, get 1 additional Medicare enrollees to receive HbA1c screening.								Randolph, IN	86.45%	
Source	Dartmouth Atlas of Health Care			Year(s)	2012		Lawrence, OH	79.39%			
Mammography Screening Percentage of female Medicare enrollees ages 67-69 that receive mammography screening	Rank	10th Ranked	Value	10th Ranked Value	Difference	Shift in Value	US Average	Peer County	Peer Value		
	21	Knox	63.64%	65.71%	2.08%	↑Good ↓Bad	63.00%	Guernsey, OH	63.84%		
	For every 100 female Medicare enrollees, get 3 additional Medicare enrollees to receive their mammography screening.								Randolph, IN	64.69%	
Source	Dartmouth Atlas of Health Care			Year(s)	2012		Lawrence, OH	56.79%			
High School Graduation Percentage of ninth-grade cohort that graduates in four years	Rank	10th Ranked	Value	10th Ranked Value	Difference	Shift in Value	US Average	Peer County	Peer Value		
	44	Carroll	92.00%	95.32%	3.32%	↑Good ↓Bad	80.00%	Guernsey, OH	90.71%		
	For every 100 ninth graders, assist 4 additional ninth graders to graduate within four years.								Randolph, IN	90.00%	
Source	data.gov, supplemented w/ National Center for Education Statistics			Year(s)	2011-2012		Lawrence, OH	90.96%			
Some College Percentage of adults ages 25-44 years with some post-secondary education	Rank	10th Ranked	Value	10th Ranked Value	Difference	Shift in Value	US Average	Peer County	Peer Value		
	70	Shelby	38.86%	62.09%	23.24%	↑Good ↓Bad	63.00%	Guernsey, OH	47.78%		
	For every 100 adults between 25-44 years of age, assist 2324 additional adults to complete some coursework at the collegiate level.								Randolph, IN	54.49%	
Source	American Community Survey			Year(s)	2009-2013		Lawrence, OH	48.43%			
Unemployment Percentage of population ages 16 and older unemployed but seeking work	Rank	10th Ranked	Value	10th Ranked Value	Difference	Shift in Value	US Average	Peer County	Peer Value		
	47	Blount	9.20%	6.89%	2.31%	↑Bad ↓Good	8.10%	Guernsey, OH	8.23%		
	For every 100 persons ages 16 years and older, help 3 persons successfully find employment.								Randolph, IN	8.56%	
Source	Bureau of Labor Statistics			Year(s)	2013		Lawrence, OH	7.88%			
Children in Poverty Percentage of children under age 18 in poverty	Rank	10th Ranked	Value	10th Ranked Value	Difference	Shift in Value	US Average	Peer County	Peer Value		
	48	Montgomery	29.00%	21.40%	7.60%	↑Bad ↓Good	23.00%	Guernsey, OH	33.90%		
	For every 100 children (under 18 years) in poverty, help 27 children to find assistance to get out of poverty.								Randolph, IN	26.20%	
Source	Small Area Income and Poverty Estimates			Year(s)	2013		Lawrence, OH	28.50%			
Income Inequality Ratio of household income at the 80th percentile to income at the 20th percentile	Rank	10th Ranked	Value	10th Ranked Value	Difference	Shift in Value	US Average	Peer County	Peer Value		
	44	Williamson	4.50	4.11	0.39	↑Bad ↓Good	NA	Guernsey, OH	4.46		
	To reach a household income ratio at or below that of the 10th ranking county reduce the gap between the 80th percentile and 20th percentile by 1 household(s).								Randolph, IN	4.11	
Source	American Community Survey			Year(s)	2009-2013		Lawrence, OH	4.66			

Health Factors

Clinical Care

Social & Economic Factors

Health Factors

Social & Economic Factors

Children in Single-Parent Households	Rank	10th Ranked	Value	10th Ranked Value	Difference	Shift in Value	US Average	Peer County	Peer Value
	65	Cheatham	33.83%	25.43%	8.40%	↑Bad ↓Good	21.00%	Guernsey, OH	32.44%
Percentage of children that live in a household headed by single parent	For every 100 single parent households in the county, investigate ways to encourage 25 households to be a multi-parent household.							Randolph, IN	34.99%
Source	American Community Survey		Year(s)	2009-2013		Lawrence, OH	37.50%		
Social Associations	Rank	10th Ranked	Value	10th Ranked Value	Difference	Shift in Value	US Average	Peer County	Peer Value
34	Henry	11.80	16.70	4.90	↑Good ↓Bad	33.00%	Guernsey, OH	16.07	
Number of membership associations per 10,000 population	For every 100 people in the county, increase the number of membership associations by 1.							Randolph, IN	18.98
Source	County Business Patterns		Year(s)	2012		Lawrence, OH	11.11		
Violent Crime	Rank	10th Ranked	Value	10th Ranked Value	Difference	Shift in Value	US Average	Peer County	Peer Value
46	Carter	335.01	206.33	128.68	↑Bad ↓Good	387.00	Guernsey, OH	141.84	
Number of reported violent crime offenses per 100,000 population	For every 100 persons in the county, prevent 39 people from committing a violent crime.							Randolph, IN	24.93
Source	Uniform Crime Reporting - FBI		Year(s)	2010-2012		Lawrence, OH	166.55		
Injury Deaths	Rank	10th Ranked	Value	10th Ranked Value	Difference	Shift in Value	US Average	Peer County	Peer Value
52	Fayette	93.54	68.81	24.72	↑Bad ↓Good	59.00	Guernsey, OH	66.36	
Number of deaths due to injury per 100,000 population	For every 1,000 population consider ways to prevent 265 deaths as a result of intentional and unintentional injury.							Randolph, IN	55.88
Source	CDC WONDER mortality data		Year(s)	2008-2012		Lawrence, OH	71.71		
Air Pollution - Particulate Matter	Rank	10th Ranked	Value	10th Ranked Value	Difference	Shift in Value	US Average	Peer County	Peer Value
63	Greene	13.92	13.14	0.78	↑Bad ↓Good	11.10	Guernsey, OH	13.73	
Average daily density of fine particulate matter in micrograms per cubic meter (PM2.5)	Reduce the average daily measure of fine particulate matter by 0.78 micrograms per cubic meter (PM2.5).							Randolph, IN	13.46
Source	CDC WONDER Environmental data		Year(s)	2011		Lawrence, OH	13.13		

Physical Environment

Drinking Water Violations	Rank	1st Ranked	Value	1st Ranked Value	Difference	Shift in Value	US Average	Peer County	Peer Value
88	Anderson	14.01%	0.00%	14.01%	↑Bad ↓Good	8.00%	Guernsey, OH	1.37%	
Percentage of population potentially exposed to water exceeding a violation limit during the past year	For every 100 persons in the county exposed to water violations, assist 1 person(s) from exposure to health-based violations in public water systems.							Randolph, IN	0.00%
Source	Safe Drinking Water Information System		Year(s)	FY2013-14		Lawrence, OH	0.00%		
Severe Housing Problems	Rank	10th Ranked	Value	10th Ranked Value	Difference	Shift in Value	US Average	Peer County	Peer Value
27	Lewis	12.43%	10.96%	1.47%	↑Bad ↓Good	19.00%	Guernsey, OH	12.38%	
Percentage of households with at least 1 of 4 housing problems: overcrowding, high housing costs, or lack of kitchen or plumbing facilities	For every 100 persons in the county experiencing housing problems, help 12 person(s) to find housing assistance.							Randolph, IN	12.18%
Source	Comprehensive Housing Affordability Strategy (CHAS) data		Year(s)	2007-2011		Lawrence, OH	12.62%		
Driving Alone to Work	Rank	10th Ranked	Value	10th Ranked Value	Difference	Shift in Value	US Average	Peer County	Peer Value
20	Davidson	82.20%	80.03%	2.17%	↑Bad ↓Good	76.00%	Guernsey, OH	85.44%	
Percentage of the workforce that drives alone to work	For every 100 persons that currently drive alone to work, convince 3 to carpool or take mass-transportation.							Randolph, IN	83.25%
Source	American Community Survey		Year(s)	2009-2013		Lawrence, OH	88.89%		
Long Commute - Driving Alone	Rank	10th Ranked	Value	10th Ranked Value	Difference	Shift in Value	US Average	Peer County	Peer Value
18	Hamilton	26.90%	25.10%	1.80%	↑Bad ↓Good	34.00%	Guernsey, OH	26.40%	
Among workers who commute in their car alone, the percentage that commute more than 30 minutes	For every 100 persons that currently drive more than 30 minutes alone to work, convince 7 to carpool or take mass-transportation.							Randolph, IN	33.40%
Source	American Community Survey		Year(s)	2009-2013		Lawrence, OH	29.60%		