



# 2015

## DRIVE YOUR COUNTY TO THE TOP TEN:

Accelerating Action Towards Improving County Health

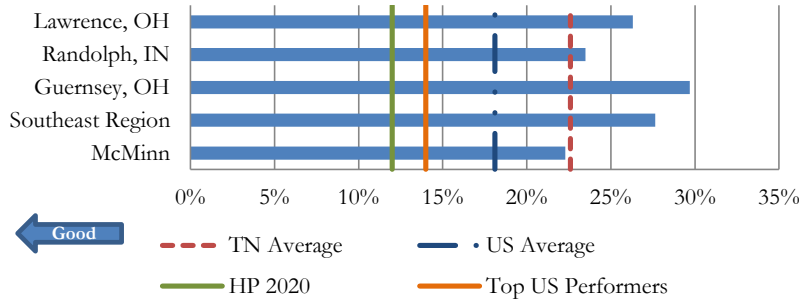
## McMinn County



Demographics

<b>Population:</b>	52,341	<b>&lt;18 YOA:</b>	21.74%	<b>65+ YOA:</b>	18.40%	<b>% Rural:</b>	60.34%
<b>Unemployment:</b>	9.19%	<b>% Females:</b>	51.22%	<b>% Males:</b>	48.78%	<b>Graduation Rate:</b>	92.00
<b>Single parent households:</b>	29.05%	<b>MHI:</b>	\$40,543				

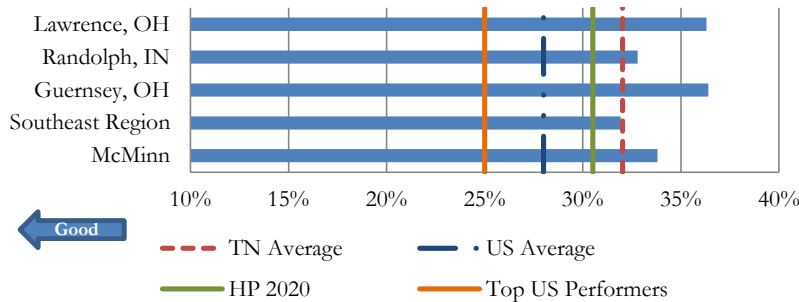
### Adult Smoking



### Top Third

Measure	Value
Drinking Water Violations	0.00%
Excessive Drinking	5.30%
Social Associations	15.64
Children in Poverty	24.60%
Severe Housing Problems	12.12%
Adult Smoking	22.30%
Preventable Hospital Stays	75.17
Long Commute - Driving Alone	28.20%
Low Birthweight	8.24%
Dentists	2617:1

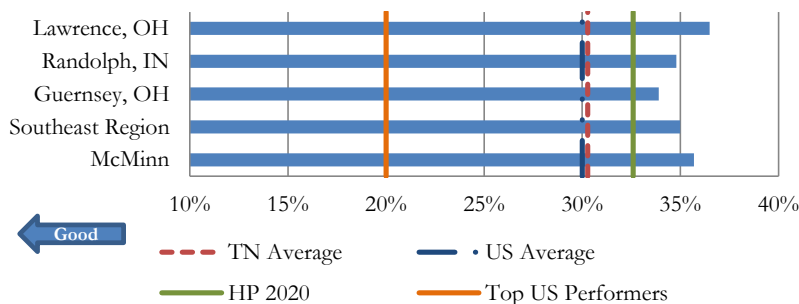
### Adult Obesity



### Middle Third

Measure	Value
Mammography Screening	61.91%
Children in Single-Parent Households	29.05%
Teen Births	47.90
Mental Health Providers	1939:1
Income Inequality	4.44
Air Pollution - Particulate Matter	13.52
Primary Care Physicians	2097:1
High School Graduation	92.00%
Driving Alone to Work	84.75%
Unemployment	9.19%

### Physical Inactivity



### Bottom Third

Measure	Value
Poor or Fair Health	30.50%
Violent Crime	531.20
Poor Physical Health Days	6.20
Physical Inactivity	35.70%
Poor Mental Health Days	4.70

YOA: Years of Age. MHI: Median Household Income. HP 2020: Healthy People 2020 Goal. Adult Smoking: Percentage of adults who are current smokers. Source: Behavioral Risk Factor Surveillance System; 2006-2012. Adult Obesity: Percentage of adults that report a BMI of 30 or more. Source: CDC Diabetes Interactive Atlas; 2011. Physical Inactivity: Percentage of adults aged 20 and over reporting no leisure-time physical activity. Source: CDC Diabetes Interactive Atlas; 2011. Prepared by the Division of Policy, Planning and Assessment, Office of Performance Management, Tennessee Department of Health. Nashville, TN. opm.health@tn.gov or 615-741-5001.



Health Outcomes	Length of Life	Premature Death									
		Rank	10th Ranked	Value	10th Ranked Value	Difference	Shift in Value	US Average	Peer County	Peer Value	
		52	Lewis	10086.80	7769.75	2317.05	↑Bad ↓Good	6,811.00	Guernsey, OH	8186.66	
		For every 100 people in the county, 1 people in the county need to live one year closer to age 75.							Randolph, IN	7617.48	
		Source		National Center for Health Statistics - Mortality files		Year(s)		2010-2012	Lawrence, OH	9705.35	
	Quality of Life	Poor or Fair Health									
		Rank	10th Ranked	Value	10th Ranked Value	Difference	Shift in Value	US Average	Peer County	Peer Value	
		85	Putnam	30.50%	16.60%	13.90%	↑Bad ↓Good	12.40%	Guernsey, OH	15.40%	
		Improve the health of 14 out of every 100 people in the county who, in general, report being in poor or fair health.							Randolph, IN	20.10%	
		Source		Behavioral Risk Factor Surveillance System		Year(s)		2006-2012	Lawrence, OH	27.90%	
	Quality of Life	Poor Physical Health Days*									
		Rank	10th Ranked	Value	10th Ranked Value	Difference	Shift in Value	US Average	Peer County	Peer Value	
		75	Chester	6.20	3.40	2.80	↑Bad ↓Good	3.70	Guernsey, OH	4.20	
		Engage people in the county on ways to reduce number of poor physical health days reported by residents by 3 days per month.							Randolph, IN	5.00	
		Source		Behavioral Risk Factor Surveillance System		Year(s)		2006-2012	Lawrence, OH	7.10	
	Quality of Life	Poor Mental Health Days									
		Rank	10th Ranked	Value	10th Ranked Value	Difference	Shift in Value	US Average	Peer County	Peer Value	
		64	Henderson	4.70	2.80	1.90	↑Bad ↓Good	3.50	Guernsey, OH	4.40	
		Engage people in the county on ways to reduce number of poor physical health days reported by residents by 2 days per month.							Randolph, IN	3.60	
		Source		Behavioral Risk Factor Surveillance System		Year(s)		2006-2012	Lawrence, OH	6.10	
	Quality of Life	Low Birthweight									
		Rank	10th Ranked	Value	10th Ranked Value	Difference	Shift in Value	US Average	Peer County	Peer Value	
		26	Lewis	8.24%	7.29%	0.95%	↑Bad ↓Good	8.10%	Guernsey, OH	8.32%	
		Reduce the number of low birth weight babies by 1 for every 100 live births.							Randolph, IN	8.35%	
		Source		National Center for Health Statistics - Natality files		Year(s)		2006-2012	Lawrence, OH	10.89%	
Health Factors	Health Behaviors	Adult Smoking									
		Rank	10th Ranked	Value	10th Ranked Value	Difference	Shift in Value	US Average	Peer County	Peer Value	
		23	Knox	22.30%	18.50%	3.80%	↑Bad ↓Good	18.10%	Guernsey, OH	29.70%	
			Get 18 out of every 100 current adult smokers in the county to quit smoking.							Randolph, IN	23.50%
			Source		Behavioral Risk Factor Surveillance System		Year(s)		2006-2012	Lawrence, OH	26.30%
		Health Behaviors	Adult Obesity								
	Rank		10th Ranked	Value	10th Ranked Value	Difference	Shift in Value	US Average	Peer County	Peer Value	
	62		Hamilton	33.80%	29.10%	4.70%	↑Bad ↓Good	28.00%	Guernsey, OH	36.40%	
			Get 14 out of every 100 current obese adults in the county to reduce their BMI below 30.							Randolph, IN	32.80%
		Source		CDC Diabetes Interactive Atlas		Year(s)		2011	Lawrence, OH	36.30%	
	Health Behaviors	Food Environment Index									
Rank		1st Ranked	Value	1st Ranked Value	Difference	Shift in Value	US Average	Peer County	Peer Value		
51		Williamson	7.20	8.9	1.7	↑Good ↓Bad	7.60	Guernsey, OH	7.20		
		Increase the county's food index score by 1.7.							Randolph, IN	6.90	
		Source		USDA Food Environment Atlas, Map the Meal Gap		Year(s)		2012	Lawrence, OH	7.30	

Prepared by the Division of Policy, Planning and Assessment, Office of Performance Management, Tennessee Department of Health, Nashville, TN. April 2015. opm.health@tn.gov or 615-741-5001. The full report can be accessed at: <http://health.tn.gov/statistics/specialprojects.htm>. All data is from the University of Wisconsin Population Health Institute and Robert Wood Johnson Foundation's, 2015 *County Health Rankings and Roadmaps* report. Difference statements represent the absolute value using the following formula: ["Value" - "10th Ranked Value"]. The action statements are based on the assumption that no new additional cases occur. All rankings and action statements presented in this report must be interpreted with caution due to various limitations of each measurement. Further information with regards to the strengths and limitations of each measurement may be found by clicking the hyperlink found in the description of each measurement.

Health Factors

Health Behaviors

Physical Inactivity	Rank	10th Ranked	Value	10th Ranked Value	Difference	Shift in Value	US Average	Peer County	Peer Value
	71	Wilson	35.70%	28.50%	7.20%	↑Bad ↓Good	30.00%	Guernsey, OH	33.90%
<a href="#">Percentage of adults aged 20 and over reporting no leisure-time physical activity</a>	Get 21 out of every 100 currently physically inactive adults to exercise during leisure time.							Randolph, IN	34.80%
Source	CDC Diabetes Interactive Atlas			Year(s)	2011		Lawrence, OH	36.50%	
Access to Exercise Opportunities	Rank	10th Ranked	Value	10th Ranked Value	Difference	Shift in Value	US Average	Peer County	Peer Value
	53	Loudon	50.98%	78.50%	27.52%	↑Good ↓Bad	77.00%	Guernsey, OH	48.47%
<a href="#">Percentage of population with adequate access to locations for physical activity</a>	Consider how to remove barriers to access exercise locations to reach an additional 27.52 percent of the county's population.							Randolph, IN	32.15%
Source	Business Analyst, Delorme, ESRI, & US Census Tigerline Files			Year(s)	2010 & 2013		Lawrence, OH	95.51%	
Excessive Drinking	Rank	1st Ranked	Value	1st Ranked Value	Difference	Shift in Value	US Average	Peer County	Peer Value
	5	Greene	5.30%	3.30%	2.00%	↑Bad ↓Good	15.00%	Guernsey, OH	13.80%
<a href="#">Percentage of adults reporting binge or heavy drinking</a>	Get 38 out of every 100 adults in the county that currently drink to excess (binge and heavy drinkers) to stop drinking more than one (women) or two (men) drinks per day on average.							Randolph, IN	16.00%
Source	Behavioral Risk Factor Surveillance System			Year(s)	2006-2012		Lawrence, OH	13.30%	
Alcohol-Impaired Driving Deaths	Rank	10th Ranked	Value	10th Ranked Value	Difference	Shift in Value	US Average	Peer County	Peer Value
	62	McNairy	31.75%	18.75%	13.00%	↑Bad ↓Good	32.00%	Guernsey, OH	33.33%
<a href="#">Percentage of driving deaths with alcohol involvement</a>	Reduce the number of alcohol related driving deaths by 13 percent.							Randolph, IN	17.65%
Source	Fatality Analysis Reporting System			Year(s)	2009-2013		Lawrence, OH	35.29%	
Sexually Transmitted Infections	Rank	10th Ranked	Value	10th Ranked Value	Difference	Shift in Value	US Average	Peer County	Peer Value
	47	Scott	295.70	144.30	151.40	↑Bad ↓Good	458.00	Guernsey, OH	268.70
<a href="#">Number of newly diagnosed chlamydia cases per 100,000 population</a>	Consider ways to educate 6 out of every 10 persons self-reporting to be involved in any sexual contact to commit to using safe sex practices to prevent the infection of Chlamydia.							Randolph, IN	232.40
Source	National Center for HIV/AIDS, Viral Hepatitis, STD, & TB Prevention			Year(s)	2012		Lawrence, OH	215.70	
Teen Births	Rank	10th Ranked	Value	10th Ranked Value	Difference	Shift in Value	US Average	Peer County	Peer Value
	36	Putnam	47.90	37.04	10.86	↑Bad ↓Good	31.00	Guernsey, OH	40.89
<a href="#">Teen birth rate per 1,000 female population, ages 15-19</a>	For every 100 teenage females (ages 15 to 19 years) in the county, consider ways to prevent 23 teen(s) from becoming pregnant.							Randolph, IN	45.17
Source	National Center for Health Statistics - Natality files			Year(s)	2006-2012		Lawrence, OH	48.78	

Clinical Care

Uninsured	Rank	10th Ranked	Value	10th Ranked Value	Difference	Shift in Value	US Average	Peer County	Peer Value
	61	Blount	17.28%	14.64%	2.64%	↑Bad ↓Good	18.00%	Guernsey, OH	14.71%
<a href="#">Percentage of population under age 65 without health insurance</a>	Get 16 out of every 100 currently uninsured adults ages 18-64 to obtain health insurance.							Randolph, IN	17.78%
Source	Small Area Health Insurance Estimates			Year(s)	2012		Lawrence, OH	14.06%	
Primary Care Physicians	Rank	10th Ranked	Value	10th Ranked Value	Difference	Shift in Value	US Average	Peer County	Peer Value
	41	Anderson	2097:1	1397:1	700	↑Bad ↓Good	1,355.00	Guernsey, OH	1991:1
<a href="#">Ratio of population to primary care physicians</a>	To reach a population-to-provider ratio at or exceeding that of the 10th ranking county, 13 primary care providers would need to be recruited to the county. More importantly, if the county's value is greater than 3,500, this county would be considered a Health Professional Shortage Area.							Randolph, IN	4303:1
Source	Area Health Resource File/American Medical Association			Year(s)	2012		Lawrence, OH	2142:1	
Dentists	Rank	10th Ranked	Value	10th Ranked Value	Difference	Shift in Value	US Average	Peer County	Peer Value
	30	Maury	2617:1	1675:1	942	↑Bad ↓Good	1,663.00	Guernsey, OH	2086:1
<a href="#">Ratio of population to dentists</a>	To reach a population-to-provider ratio at or exceeding that of the 10th ranking county, 12 dental care providers would need to be recruited to the county. More importantly, if the county's value is greater than 5,000, this county would be considered a Health Professional Shortage Area.							Randolph, IN	5125:1
Source	Area Health Resource File/American Medical Association			Year(s)	2013		Lawrence, OH	3642:1	

Health Factors	Clinical Care	Mental Health Providers		Rank	10th Ranked	Value	10th Ranked Value	Difference	Shift in Value	US Average	Peer County	Peer Value
		<a href="#">Ratio of population to mental health providers</a>		36	McNairy	1939:1	688:1	1251	↑Bad ↓Good	753	Guernsey, OH	1132:1
		<b>To reach a population-to-provider ratio at or exceeding that of the 10th ranking county, 50 mental health providers would need to be recruited to the county. More importantly, if the county's value is greater than 30,000, this county would be considered a Health Professional Shortage Area.</b>									Randolph, IN	4271:1
		Source			CMS, National Provider Identification file			Year(s)		2014	Lawrence, OH	2135:1
		Preventable Hospital Stays		Rank	10th Ranked	Value	10th Ranked Value	Difference	Shift in Value	US Average	Peer County	Peer Value
<a href="#">Number of hospital stays for ambulatory-care sensitive conditions per 1,000 Medicare enrollees</a>		25	Marshall	75.17	58.47	16.70	↑Bad ↓Good	65.00	Guernsey, OH	116.49		
		<b>For every 100 Medicare enrollees, prevent 1 Medicare enrollees from being hospitalized for ambulatory-care sensitive conditions.</b>									Randolph, IN	80.22
		Source			Dartmouth Atlas of Health Care			Year(s)		2012	Lawrence, OH	91.63
		Diabetic Monitoring		Rank	10th Ranked	Value	10th Ranked Value	Difference	Shift in Value	US Average	Peer County	Peer Value
<a href="#">Percentage of diabetic Medicare enrollees ages 65-75 that receive HbA1c monitoring</a>		49	Crockett	86.65%	88.92%	2.28%	↑Good ↓Bad	84.00%	Guernsey, OH	78.74%		
		<b>For every 100 diabetic Medicare enrollees, get 3 additional Medicare enrollees to receive HbA1c screening.</b>									Randolph, IN	86.45%
		Source			Dartmouth Atlas of Health Care			Year(s)		2012	Lawrence, OH	79.39%
		Mammography Screening		Rank	10th Ranked	Value	10th Ranked Value	Difference	Shift in Value	US Average	Peer County	Peer Value
<a href="#">Percentage of female Medicare enrollees ages 67-69 that receive mammography screening</a>		34	Knox	61.91%	65.71%	3.80%	↑Good ↓Bad	63.00%	Guernsey, OH	63.84%		
		<b>For every 100 female Medicare enrollees, get 4 additional Medicare enrollees to receive their mammography screening.</b>									Randolph, IN	64.69%
		Source			Dartmouth Atlas of Health Care			Year(s)		2012	Lawrence, OH	56.79%
		High School Graduation		Rank	10th Ranked	Value	10th Ranked Value	Difference	Shift in Value	US Average	Peer County	Peer Value
<a href="#">Percentage of ninth-grade cohort that graduates in four years</a>		44	Carroll	92.00%	95.32%	3.32%	↑Good ↓Bad	80.00%	Guernsey, OH	90.71%		
		<b>For every 100 ninth graders, assist 4 additional ninth graders to graduate within four years.</b>									Randolph, IN	90.00%
		Source			data.gov, supplemented w/ National Center for Education Statistics			Year(s)		2011-2012	Lawrence, OH	90.96%
		Some College		Rank	10th Ranked	Value	10th Ranked Value	Difference	Shift in Value	US Average	Peer County	Peer Value
<a href="#">Percentage of adults ages 25-44 years with some post-secondary education</a>		50	Shelby	44.14%	62.09%	17.96%	↑Good ↓Bad	63.00%	Guernsey, OH	47.78%		
		<b>For every 100 adults between 25-44 years of age, assist 1796 additional adults to complete some coursework at the collegiate level.</b>									Randolph, IN	54.49%
		Source			American Community Survey			Year(s)		2009-2013	Lawrence, OH	48.43%
		Unemployment		Rank	10th Ranked	Value	10th Ranked Value	Difference	Shift in Value	US Average	Peer County	Peer Value
<a href="#">Percentage of population ages 16 and older unemployed but seeking work</a>		46	Blount	9.19%	6.89%	2.30%	↑Bad ↓Good	8.10%	Guernsey, OH	8.23%		
		<b>For every 100 persons ages 16 years and older, help 3 persons successfully find employment.</b>									Randolph, IN	8.56%
		Source			Bureau of Labor Statistics			Year(s)		2013	Lawrence, OH	7.88%
		Children in Poverty		Rank	10th Ranked	Value	10th Ranked Value	Difference	Shift in Value	US Average	Peer County	Peer Value
<a href="#">Percentage of children under age 18 in poverty</a>		18	Montgomery	24.60%	21.40%	3.20%	↑Bad ↓Good	23.00%	Guernsey, OH	33.90%		
		<b>For every 100 children (under 18 years) in poverty, help 14 children to find assistance to get out of poverty.</b>									Randolph, IN	26.20%
		Source			Small Area Income and Poverty Estimates			Year(s)		2013	Lawrence, OH	28.50%
		Income Inequality		Rank	10th Ranked	Value	10th Ranked Value	Difference	Shift in Value	US Average	Peer County	Peer Value
<a href="#">Ratio of household income at the 80th percentile to income at the 20th percentile</a>		36	Williamson	4.44	4.11	0.33	↑Bad ↓Good	NA	Guernsey, OH	4.46		
		<b>To reach a household income ratio at or below that of the 10th ranking county reduce the gap between the 80th percentile and 20th percentile by 1 household(s).</b>									Randolph, IN	4.11
		Source			American Community Survey			Year(s)		2009-2013	Lawrence, OH	4.66

Health Factors

Clinical Care

Social & Economic Factors

Health Factors

Social & Economic Factors

Children in Single-Parent Households	Rank	10th Ranked	Value	10th Ranked Value	Difference	Shift in Value	US Average	Peer County	Peer Value
	35	Cheatham	29.05%	25.43%	3.62%	↑Bad ↓Good	21.00%	Guernsey, OH	32.44%
<a href="#">Percentage of children that live in a household headed by single parent</a>	For every 100 single parent households in the county, investigate ways to encourage 13 households to be a multi-parent household.							Randolph, IN	34.99%
Source	American Community Survey		Year(s)		2009-2013		Lawrence, OH	37.50%	
Social Associations	Rank	10th Ranked	Value	10th Ranked Value	Difference	Shift in Value	US Average	Peer County	Peer Value
13	Henry	15.64	16.70	1.05	↑Good ↓Bad	33.00%	Guernsey, OH	16.07	
<a href="#">Number of membership associations per 10,000 population</a>	For every 100 people in the county, increase the number of membership associations by 1.							Randolph, IN	18.98
Source	County Business Patterns		Year(s)		2012		Lawrence, OH	11.11	
Violent Crime	Rank	10th Ranked	Value	10th Ranked Value	Difference	Shift in Value	US Average	Peer County	Peer Value
79	Carter	531.20	206.33	324.87	↑Bad ↓Good	387.00	Guernsey, OH	141.84	
<a href="#">Number of reported violent crime offenses per 100,000 population</a>	For every 100 persons in the county, prevent 62 people from committing a violent crime.							Randolph, IN	24.93
Source	Uniform Crime Reporting - FBI		Year(s)		2010-2012		Lawrence, OH	166.55	
Injury Deaths	Rank	10th Ranked	Value	10th Ranked Value	Difference	Shift in Value	US Average	Peer County	Peer Value
49	Fayette	91.67	68.81	22.86	↑Bad ↓Good	59.00	Guernsey, OH	66.36	
<a href="#">Number of deaths due to injury per 100,000 population</a>	For every 1,000 population consider ways to prevent 250 deaths as a result of intentional and unintentional injury.							Randolph, IN	55.88
Source	CDC WONDER mortality data		Year(s)		2008-2012		Lawrence, OH	71.71	
Air Pollution - Particulate Matter	Rank	10th Ranked	Value	10th Ranked Value	Difference	Shift in Value	US Average	Peer County	Peer Value
38	Greene	13.52	13.14	0.38	↑Bad ↓Good	11.10	Guernsey, OH	13.73	
<a href="#">Average daily density of fine particulate matter in micrograms per cubic meter (PM2.5)</a>	Reduce the average daily measure of fine particulate matter by 0.38 micrograms per cubic meter (PM2.5).							Randolph, IN	13.46
Source	CDC WONDER Environmental data		Year(s)		2011		Lawrence, OH	13.13	

Physical Environment

Drinking Water Violations	Rank	1st Ranked	Value	1st Ranked Value	Difference	Shift in Value	US Average	Peer County	Peer Value
1	Anderson	0.00%	0.00%	0.00%	↑Bad ↓Good	8.00%	Guernsey, OH	1.37%	
<a href="#">Percentage of population potentially exposed to water exceeding a violation limit during the past year</a>	No Action Required							Randolph, IN	0.00%
Source	Safe Drinking Water Information System		Year(s)		FY2013-14		Lawrence, OH	0.00%	
Severe Housing Problems	Rank	10th Ranked	Value	10th Ranked Value	Difference	Shift in Value	US Average	Peer County	Peer Value
21	Lewis	12.12%	10.96%	1.16%	↑Bad ↓Good	19.00%	Guernsey, OH	12.38%	
<a href="#">Percentage of households with at least 1 of 4 housing problems: overcrowding, high housing costs, or lack of kitchen or plumbing facilities</a>	For every 100 persons in the county experiencing housing problems, help 10 person(s) to find housing assistance.							Randolph, IN	12.18%
Source	Comprehensive Housing Affordability Strategy (CHAS) data		Year(s)		2007-2011		Lawrence, OH	12.62%	
Driving Alone to Work	Rank	10th Ranked	Value	10th Ranked Value	Difference	Shift in Value	US Average	Peer County	Peer Value
45	Davidson	84.75%	80.03%	4.72%	↑Bad ↓Good	76.00%	Guernsey, OH	85.44%	
<a href="#">Percentage of the workforce that drives alone to work</a>	For every 100 persons that currently drive alone to work, convince 6 to carpool or take mass-transportation.							Randolph, IN	83.25%
Source	American Community Survey		Year(s)		2009-2013		Lawrence, OH	88.89%	
Long Commute - Driving Alone	Rank	10th Ranked	Value	10th Ranked Value	Difference	Shift in Value	US Average	Peer County	Peer Value
25	Hamilton	28.20%	25.10%	3.10%	↑Bad ↓Good	34.00%	Guernsey, OH	26.40%	
<a href="#">Among workers who commute in their car alone, the percentage that commute more than 30 minutes</a>	For every 100 persons that currently drive more than 30 minutes alone to work, convince 11 to carpool or take mass-transportation.							Randolph, IN	33.40%
Source	American Community Survey		Year(s)		2009-2013		Lawrence, OH	29.60%	