

Sentinel Provider Influenza-Like Illness (ILI) Surveillance Summary For the Week of September 20-26, 2009 (Week 38)

Summary for	# Providers reporting	Total Providers	Total Regional ILI	Total Regional Patients	% ILI	Comparison to State*
Chattanooga-Hamilton County	3	4	26	578	4.5%	
East Tennessee Region	6	7	158	3118	5.1%	
Jackson-Madison County	0	1	0	0	0.0%	
Knoxville-Knox County	1	5	4	208	1.9%	
Mid-Cumberland Region	9	12	124	1823	6.8%	higher
Memphis-Shelby County	2	2	5	648	0.8%	lower
Nashville-Davidson County	4	5	86	1628	5.3%	
Northeast Region	2	3	3	658	0.5%	lower
South Central Region	1	3	0	109	0.0%	lower
Southeast Region	4	5	46	821	5.6%	
Sullivan County	1	2	5	83	6.0%	
Upper Cumberland Region	4	5	35	1172	3.0%	lower
West Tennessee Region	4	6	7	285	2.5%	
State of Tennessee	41	59	499	11131	4.48%	

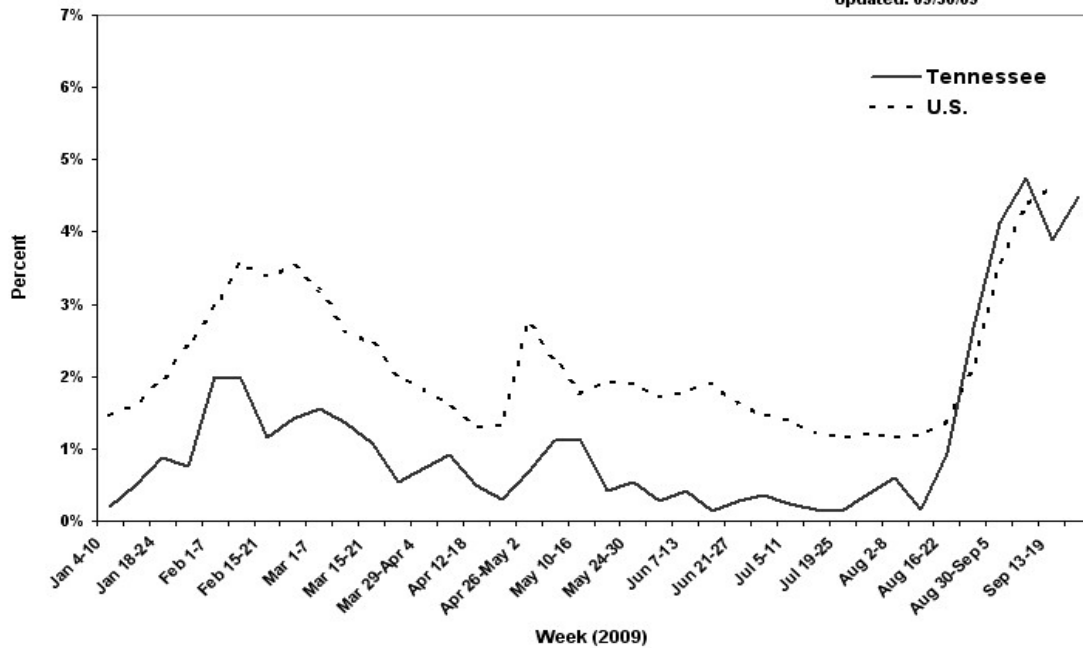
The percentage of patients with ILI reported by the TN SPN was 4.48% for Week 38 - up from 3.88% reported in Week 37. Of 149 specimens tested, 51 (34.2%) were positive by PCR for influenza: 100% were pandemic H1N1. Sentinel Providers (SPs): please note that CDC's ILI reporting format (not reflected in this summary report) will have new age groupings (0-4y, 5-24y, 25-49y, 50-64y, 65+y) for ILI reporting starting the week of October 4-10. The SPN Protocol (eff. Sept 1, 2009): SPs report ILI by the end of Tuesday following the end of the reporting week; collect and ship specimens from ILI cases on Mondays and/or Wednesdays (maximum 10/wk) using the SPN Specimen Collection Form dated 8/21/09.

The CDC reports that the percentage of patients visiting outpatient healthcare providers in the Sentinel Provider Network (SPN) with influenza-like-illness (ILI) when influenza viruses are not circulating is expected to fall at or below a specific SPN baseline [nationwide = 2.2%, East South Central region (AL, TN, MS, KY) = 2.4%]. When the percentage of patients with ILI exceeds this baseline, this suggests that influenza viruses may be circulating.

*The percentage of influenza-like-illness patients seen in each region is compared to the statewide average. Regions with percentages statistically-significantly different from the state average are noted as "higher" or "lower."

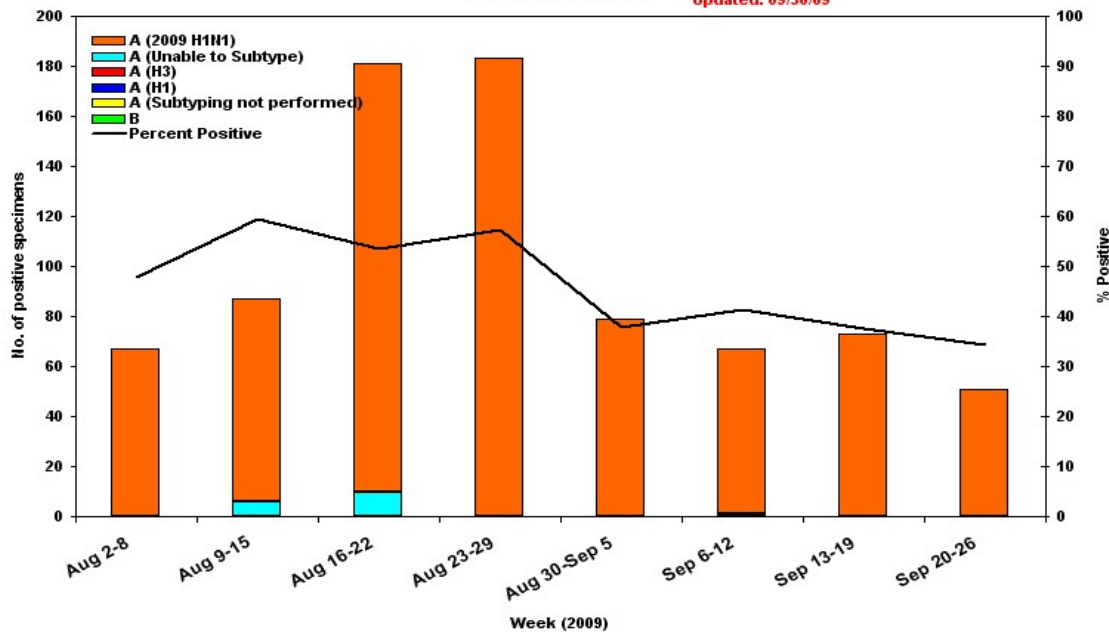
Percentage of Outpatient Visits Reported by the U.S. and Tennessee Outpatient Influenza-like Illness Surveillance Network (ILINet) as Influenza-like Illness

Updated: 09/30/09



Influenza Positive Tests Submitted to TN Dept. of Health Laboratory Services, Tennessee, 2009

Updated: 09/30/09



State Public Health Laboratory

Influenza PCR - specimens from all sources

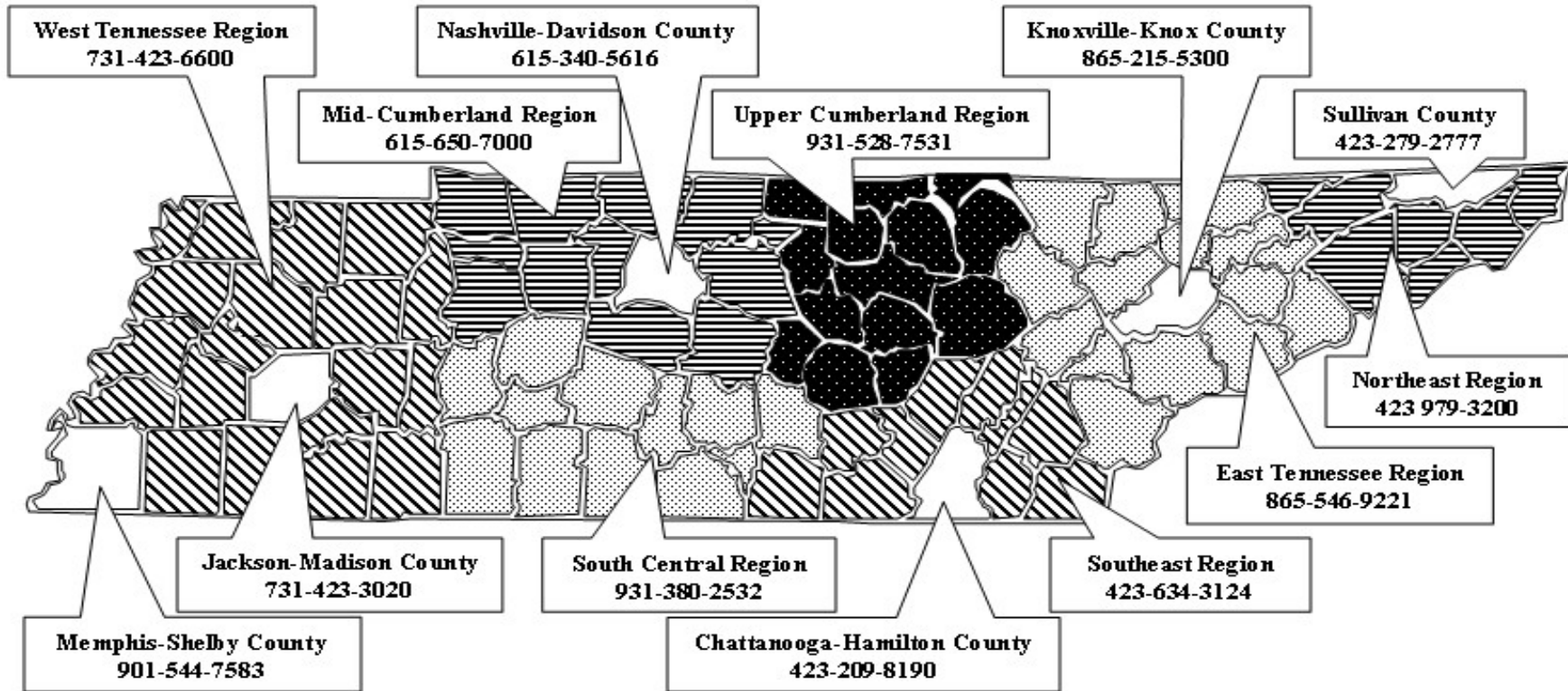
Month 2009	Report Week	# Rec'd	Pan H1N1	A (H1)	A (H3)	B
Sept.	35	209	79	0	0	0
	36	162	66	0	1	0
	37	194	73	0	0	0
	38	149	51	0	0	0
	39					
	40					
	41					
	42					
Nov.	43					

Laboratory testing is now done specifically for Seasonal A (H1) A(H3) & B virus subtypes, in addition to Pandemic A (H1). Non-subtyped and non-subtypable results are no longer reported in this chart or on the state map.

All Sentinel Provider specimens MUST now be accompanied by the SPN Influenza Submission form dated 8/21/2009, or testing will not be done.

This table shows all specimens tested by the State Lab. The state lab policy for influenza testing is at <http://health.state.tn.us/H1N1.htm#hcp>.

TENNESSEE SENTINEL PROVIDER NETWORK



Important Information

Novel influenza: www.cdc.gov or
<http://health.state.tn.us/H1N1.htm>

Submit weekly reports to:
www.ncid.cdc.gov/flu/ or Fax 888-232-1322

State Lab:

- Jerry Hindman or Susan McCool
615-262-6351 or 6374

SPN Questions:

- Regional SPN Coordinator (see map)
- Robb Garman or Robert Taylor
800-404-3006 or 615-741-7247