

**Life Expectancy in Tennessee
2004 -2006**

**Tennessee Department of Health
Office of Policy, Planning and Assessment
Surveillance, Epidemiology and Evaluation**

Report prepared by:

Fenggang Peng, MS, M. Appl. Stat.
Yinmei Li, MD, PhD
David Law, PhD

Surveillance, Epidemiology and Evaluation
Office of Policy, Planning and Assessment
Tennessee Department of Health

The authors would like to thank the Tennessee Department of Health's Division of Health Statistics for providing Birth and Death Statistical System data.

Suggested Citation:

Office of Policy, Planning and Assessment (2010). Life Expectancy in Tennessee, 2004-2006. Tennessee Department of Health, Nashville, TN.

Table of Contents

Summary	1
Introduction	1
Results	1
<i>Life Expectancy in Tennessee, 2004-2006</i>	1
<i>Changes in Life Expectancy from 1989-1991 to 2004-2006</i>	3
<i>Survivorship in Tennessee</i>	3
<i>Life Expectancy by Region</i>	6
Technical Notes	8
References	8
Appendices	9
<i>Appendix I. Life Expectancy Table for Tennessee Residents, 2004-2006</i>	9
<i>Appendix II. Life Expectancy Table for Tennessee Metro Regions, 2004-2006</i>	11
<i>Appendix III. Life Expectancy Table for Tennessee Rural Regions, 2004-2006</i>	13

Summary

This report presents life expectancy tables for Tennessee residents and for individual health department regions for the period 2004-2006. In 2004-2006, life expectancy at birth in Tennessee was 75.4 years for the total population; 72.4 for males and 78.4 for females; 76.1 for whites and 71.2 for blacks. Among the four gender-race groups, white females had the highest life expectancy at birth (79.0 years), followed by black females (74.8 years), white males (73.2 years), and black males (67.3 years). Compared to the period 1989-1991, life expectancy in 2004-2006 increased by 2.9 years for black males, 1.8 years for white males, and 1.6 years for black females, and decreased 0.1 years for white females. The life expectancy for Tennesseans was shorter than that in the United States for all gender and/or race groups. In individual health department regions, Mid-Cumberland (77.0 years) and Knox (76.9 years) had the longest life expectancy at birth for the total population while the Northwest region (74.0 years) had the shortest.

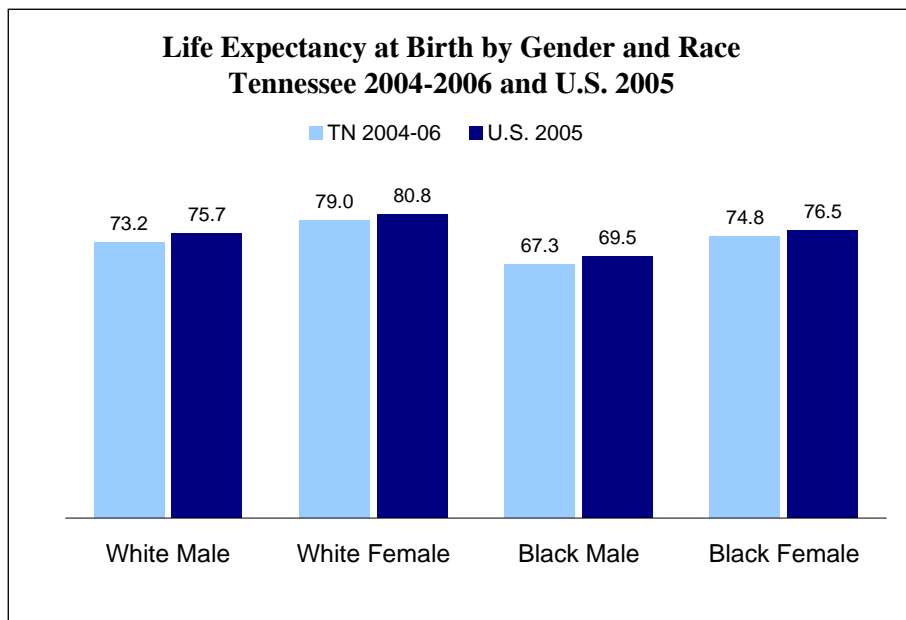
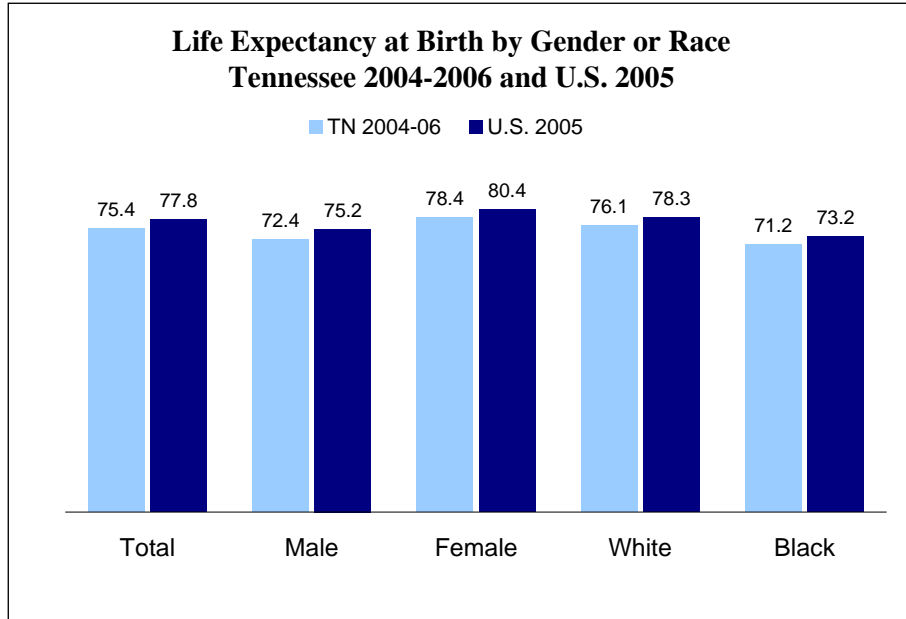
Introduction

A population's longevity can be measured by its life expectancy, which is the average number of years a person of a given age can be expected to live if current mortality rates continue to apply. Life expectancy is most often presented as life expectancy at birth, but can be calculated at other ages as well (e.g. 65 years). Life expectancy has been increasingly used to measure population health in recent years (1-3). Life expectancy at birth for the overall Tennessee population, and by gender or race, has been reported in several national reports (4, 5). However, there have not been in depth analyses at a sub-state level, such as by health department region. In this report we present life expectancy for Tennessee's overall population, as well as by gender and/or race, and for residents in each of the state's 14 Health Department regions for the period 2004-2006. We also compare Tennesseans' life expectancy at birth to that of the United States in 2005.

Results

Life Expectancy in Tennessee, 2004-2006

- Life expectancy at birth for the overall Tennessee population for 2004-2006 was 75.4 years. In other words, infants born during this time period would be expected, on average, to live to be 75.4 years of age.
- Life expectancy at birth for Tennessee females was 6 years longer than for males (78.4 and 72.4 years, respectively).
- Life expectancy at birth for Tennessee whites was almost 5 years longer than for blacks (76.1 and 71.2 years, respectively).
- White females had the longest life expectancy at birth (79.0 years), followed by black females (74.8 years), white males (73.2 years), and black males (67.3 years).



- Overall, Tennesseans born in 2004-2006 were expected to live 2.4 fewer years than their U.S. counterparts born in 2005 (life expectancy at birth of 77.8 years).
- Tennessee males were expected to live 2.8 fewer years; females 2.0 fewer years; blacks 2.0 fewer years; and whites 2.2 fewer years than their U.S. counterparts.
- A complete life table by single years of age (from 0 to 110 years) for Tennessee residents is located in Appendix I.

Changes in Life Expectancy from 1989-1991 to 2004-2006

- Life expectancy for the overall Tennessee population increased 1.1 years between the periods 1989-1991 and 2004-2006 (74.3 vs. 75.4 years, respectively) (4).
- Life expectancy increased by 2.0 years and 0.2 years for males and females, respectively.
- Life expectancy increased by 2.2 years and 0.8 years for blacks and whites, respectively.
- Among all gender-race groups the largest increase occurred among black males with 2.9 years of additional life, followed by white males (1.8 years) and black females (1.6 years). Life expectancy for white females decreased 0.1 years.

Life Expectancy at Birth for Tennessee Residents, 1989-91 vs. 2004-06 (4)

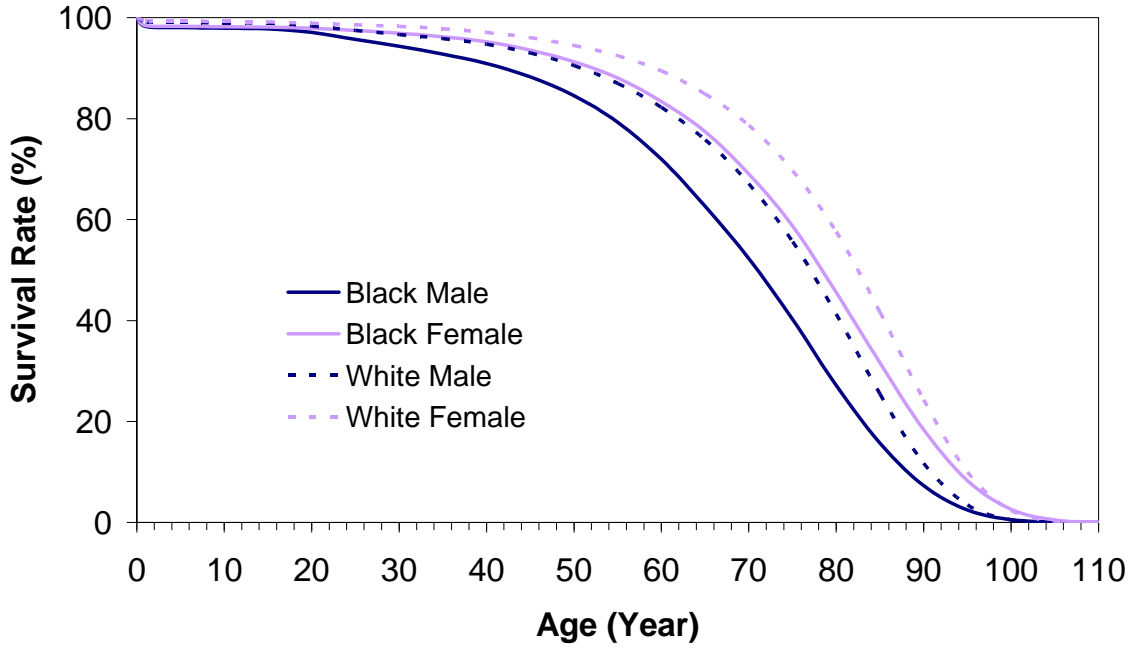
Race	Sex	1989-91	2004-06	Change
Overall*	Both	74.3	75.4	1.1
	Female	78.2	78.4	0.2
	Male	70.4	72.4	2.0
White	Both	75.3	76.1	0.8
	Female	79.1	79.0	-0.1
	Male	71.4	73.2	1.8
Black	Both	69.0	71.2	2.2
	Female	73.2	74.8	1.6
	Male	64.4	67.3	2.9

* Includes races other than white and black.

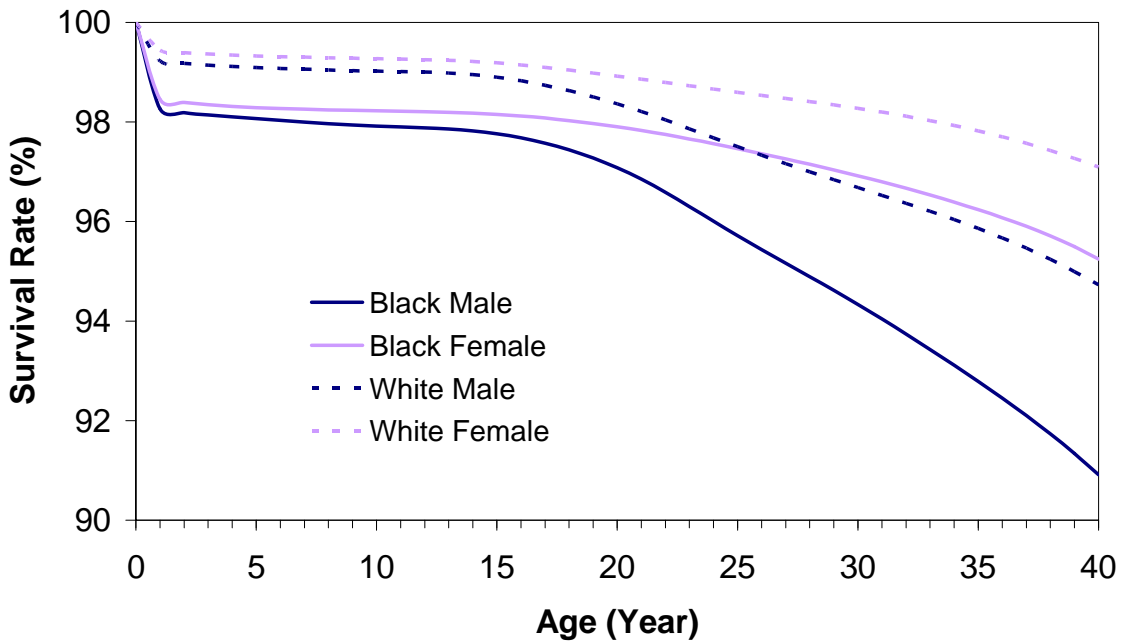
Survivorship in Tennessee

- Another measure related to life expectancy is survivorship, which is the probability of surviving at a given age.
- For Tennessee infants born in 2004-2006, the probability of surviving to their first birthday (i.e. 1 year) was 99.1%. In other words, 99.1% of infants born during this time period were expected to live until their first birthday.
- Probability of survival decreases slightly as age increases into adulthood. As middle age is reached (approximately 50 years of age), the probability of survival begins decreasing rapidly until approximately 95 years of age when it levels out again.
- The probability of surviving to the first birthday was lower for blacks than for whites.
- Among the four gender-race groups, the probability of survival was the lowest among black males and highest among white females at almost all ages.
- The probability of surviving from birth to 26 years of age was lower for black females than white males. However, the probability of surviving past ages of 26 years was higher for black females than white males.

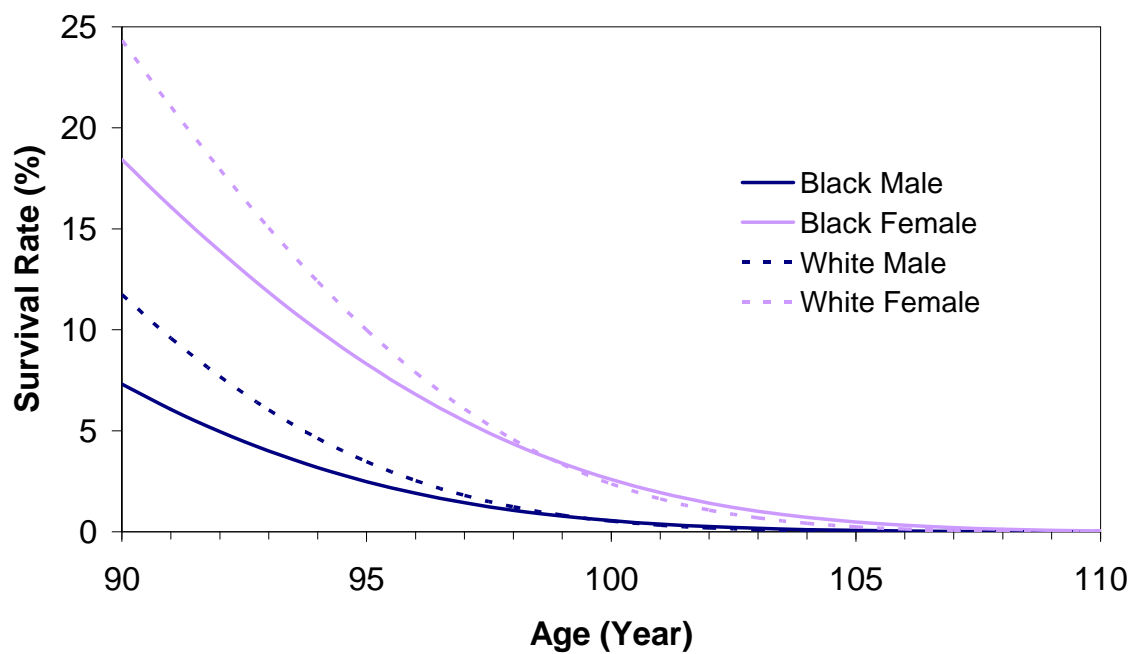
**Survival Rates by Gender and Race
Tennessee, 2004-2006, 0-110 Years of Age**



**Survival Rates by Gender and Race
Tennessee, 2004-2006, 0-40 Years of Age**

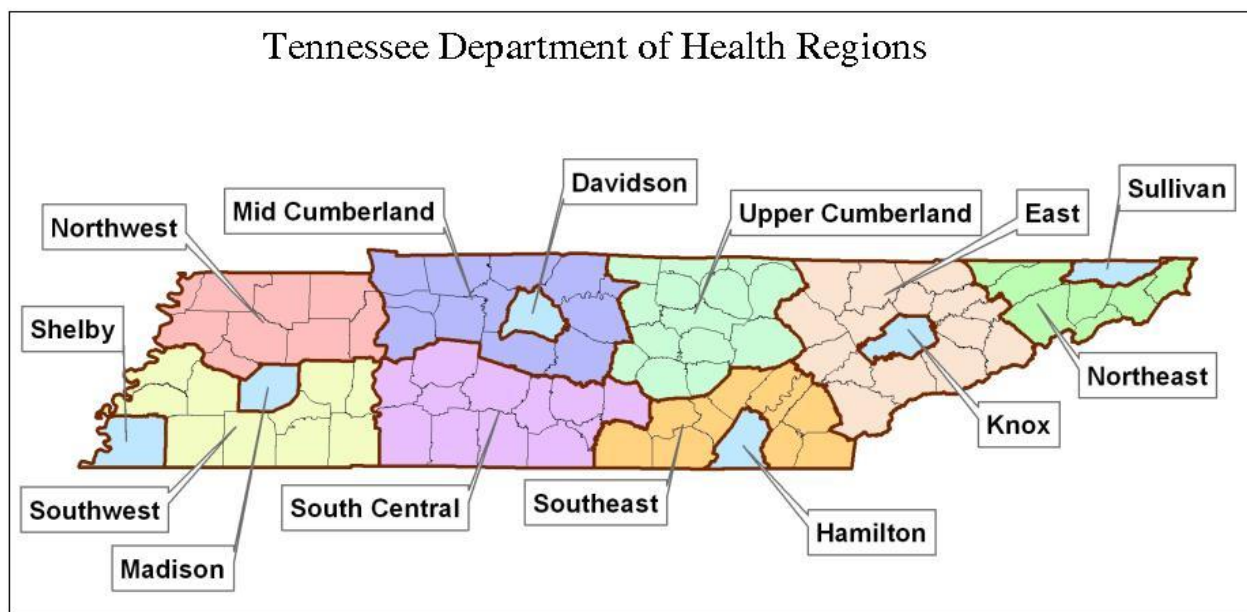


Survival Rates by Gender and Race Tennessee, 2004-2006, 90-110 Years of Age



Life Expectancy by Region

- Tennessee's 95 counties are grouped into 14 health department regions, including 6 metropolitan counties and 8 rural regions.
- Life expectancy at birth varied by region, ranging from 74.0 years in the Northwest region to 77.0 years in the Mid-Cumberland region.
- Females had a longer life expectancy than males in all regions, with the difference between males and females ranging from 4.8 years in the Mid-Cumberland region to 6.7 years in Sullivan County.
- Blacks had a shorter life expectancy than whites in all regions that had sufficient data to calculate life expectancy. The difference between whites and blacks ranged from 2.9 years in the Northeast region to 7.3 years in Shelby County.
- Complete life tables for the overall population in individual regions are presented in Appendices II (metro counties/regions) and III (rural regions).



Life Expectancy at Birth in Tennessee by Health Department Region, 2004-2006

Region	All Races*			White			Black**		
	Both	Female	Male	Both	Female	Male	Both	Female	Male
Tennessee	75.4	78.4	72.4	76.1	79.0	73.2	71.2	74.8	67.3
Davidson	75.6	78.7	72.3	76.8	79.7	73.8	71.4	75.1	67.4
East	75.3	78.3	72.3	75.3	78.3	72.3	--	--	--
Hamilton	76.0	79.1	72.7	77.1	80.1	74.0	71.2	75.4	66.7
Knox	76.9	79.6	74.0	77.4	80.0	74.5	70.6	--	--
Madison	75.2	78.2	72.0	77.3	80.2	74.3	70.5	74.0	66.5
Mid Cumberland	77.0	79.4	74.6	77.3	79.7	74.9	72.9	75.5	70.1
Northeast	74.8	77.9	71.7	74.8	77.8	71.7	71.9	--	--
Northwest	74.0	77.2	70.9	74.4	77.7	71.3	70.3	--	--
Shelby	74.4	77.5	71.1	78.0	80.6	75.2	70.7	74.4	66.5
South Central	74.6	77.8	71.5	74.8	78.0	71.7	71.9	--	--
Southeast	75.0	78.1	71.9	75.0	78.2	72.0	--	--	--
Southwest	74.4	77.4	71.5	75.0	77.8	72.1	71.9	75.5	68.2
Sullivan	75.3	78.6	71.9	75.3	78.6	71.9	--	--	--
Upper Cumberland	74.8	77.9	71.9	75.0	77.9	71.8	--	--	--

*All races include races other than white and black.

**Due to small number of deaths (less than 700 total deaths) in 2004-2006, life expectancy for some regions are not reported. Those regions are indicated by "--".

Technical Notes

Data Sources

2002-2006 birth data and 2004-2006 death data for Tennessee residents were provided by the Division of Health Statistics, Office of Policy, Planning and Assessment; Tennessee Department of Health. 2005 Tennessee population estimates were from the 2003 Population Projection Project, 2008 Revision, also provided by the Division of Health Statistics. Pooled U.S. 1999-2001 insured Medicare summary data (see Life Table Method below) were from the National Vital Statistics Reports (1).

Life Table Method

The probability of dying at age x (q_x) forms the basis of life tables. All other values in the tables are derived from it. The q_x s for ages at 0 - 84 were obtained using a method described in the U.S. Decennial Life Tables (2, 6), and based on birth and death data. For ages 85 and over, the formula $q_x = q_{x-1} \times e^k$ was used to derive q_x s, where values of k by age, race, and sex were adopted from 1999-2001 U.S. insured Medicare data (7).

Data Suppression

For the black population in some regions, the total number of deaths from 2002-2006 was less than 700, therefore, life expectancy data were not reported due to statistical reliability concerns (6).

References

1. Arias E. United States life tables, 2004. National vital statistics reports; Vol. 56, No. 9. Hyattsville, MD: National Center for Health Statistics. 2007.
2. Wei R, Curtin LR, Arias E, Anderson RN. U. S. decennial life tables for 1999–2001: Methodology of the United States life tables. National Vital Statistics Reports; Vol 57, No 4. Hyattsville, MD: National Center for Health Statistics. 2008.
3. Los Angeles County Life Tables. 1996-1998. http://publichealth.lacounty.gov/epi/docs/Life_tables_96_05.pdf. Accessed Nov, 2009.
4. National Center for Health Statistics. U.S. decennial life tables for 1989–91, Vol II, State life tables No. 43, Tennessee. Hyattsville, Maryland. 1998.
5. National Center for Health Statistics: Some trends and comparisons of United States life-table data: 1900–1981. U.S. decennial life tables for 1979-87. Vol. 1, No. 4. Washington. U.S. Government Printing Office. 1987.
6. Armstrong RJ. Methodology of the national and state life tables: 1989–91. Methodology; Vol. 1, No. 2. Hyattsville, MD: National Center for Health Statistics. 1998.
7. Anderson RN. Method for constructing complete annual U.S. life tables. National Center for Health Statistics. Vital Health Statistics; Vol. 2, No. 129. 1999.

Appendices

Appendix I. Life Expectancy Table for Tennessee Residents, 2004-2006

Age	All Races			White			Black		
	Both	Female	Male	Both	Female	Male	Both	Female	Male
0	75.4	78.4	72.4	76.1	79.0	73.2	71.2	74.8	67.3
1	75.1	78.0	72.1	75.6	78.5	72.7	71.4	75.0	67.5
2	74.1	77.0	71.1	74.6	77.5	71.8	70.4	74.0	66.6
3	73.1	76.1	70.1	73.7	76.5	70.8	69.5	73.1	65.6
4	72.1	75.1	69.2	72.7	75.5	69.8	68.5	72.1	64.6
5	71.2	74.1	68.2	71.7	74.5	68.8	67.5	71.1	63.6
6	70.2	73.1	67.2	70.7	73.6	67.9	66.5	70.1	62.7
7	69.2	72.1	66.2	69.7	72.6	66.9	65.6	69.1	61.7
8	68.2	71.1	65.2	68.7	71.6	65.9	64.6	68.1	60.7
9	67.2	70.1	64.2	67.7	70.6	64.9	63.6	67.2	59.7
10	66.2	69.1	63.2	66.7	69.6	63.9	62.6	66.2	58.7
11	65.2	68.1	62.2	65.8	68.6	62.9	61.6	65.2	57.7
12	64.2	67.1	61.2	64.8	67.6	61.9	60.6	64.2	56.8
13	63.2	66.2	60.3	63.8	66.6	60.9	59.6	63.2	55.8
14	62.3	65.2	59.3	62.8	65.6	59.9	58.6	62.2	54.8
15	61.3	64.2	58.3	61.8	64.6	59.0	57.7	61.2	53.8
16	60.3	63.2	57.4	60.8	63.7	58.0	56.7	60.2	52.9
17	59.4	62.2	56.4	59.9	62.7	57.1	55.7	59.3	51.9
18	58.4	61.3	55.5	58.9	61.7	56.1	54.8	58.3	51.0
19	57.5	60.3	54.5	58.0	60.8	55.2	53.9	57.3	50.1
20	56.5	59.3	53.6	57.1	59.8	54.3	52.9	56.4	49.2
21	55.6	58.4	52.7	56.1	58.8	53.4	52.0	55.4	48.3
22	54.7	57.4	51.8	55.2	57.9	52.4	51.1	54.4	47.4
23	53.7	56.5	50.9	54.3	56.9	51.5	50.2	53.5	46.6
24	52.8	55.5	50.0	53.3	56.0	50.6	49.3	52.5	45.7
25	51.9	54.5	49.1	52.4	55.0	49.7	48.4	51.6	44.8
26	51.0	53.6	48.2	51.5	54.0	48.8	47.5	50.6	44.0
27	50.0	52.6	47.3	50.5	53.1	47.9	46.6	49.7	43.1
28	49.1	51.7	46.4	49.6	52.1	47.0	45.7	48.8	42.2
29	48.1	50.7	45.5	48.6	51.1	46.1	44.8	47.8	41.3
30	47.2	49.7	44.6	47.7	50.2	45.1	43.8	46.9	40.5
31	46.3	48.8	43.7	46.7	49.2	44.2	42.9	45.9	39.6
32	45.3	47.8	42.7	45.8	48.2	43.3	42.0	45.0	38.7
33	44.4	46.9	41.8	44.9	47.3	42.3	41.1	44.1	37.8
34	43.5	45.9	40.9	43.9	46.3	41.4	40.2	43.1	37.0
35	42.5	45.0	40.0	43.0	45.4	40.5	39.3	42.2	36.1
36	41.6	44.0	39.1	42.1	44.4	39.6	38.4	41.3	35.2
37	40.7	43.1	38.2	41.1	43.5	38.7	37.5	40.3	34.4
38	39.8	42.2	37.3	40.2	42.6	37.7	36.6	39.4	33.5
39	38.9	41.2	36.4	39.3	41.6	36.8	35.8	38.5	32.6
40	38.0	40.3	35.5	38.4	40.7	35.9	34.9	37.6	31.8
41	37.1	39.4	34.6	37.5	39.8	35.1	34.0	36.7	30.9
42	36.2	38.5	33.7	36.6	38.9	34.2	33.2	35.8	30.1
43	35.3	37.6	32.8	35.7	37.9	33.3	32.3	35.0	29.3
44	34.4	36.7	32.0	34.8	37.0	32.4	31.5	34.1	28.5
45	33.5	35.8	31.1	33.9	36.1	31.6	30.6	33.2	27.7
46	32.7	34.9	30.3	33.0	35.2	30.7	29.8	32.4	26.9
47	31.8	34.0	29.4	32.2	34.3	29.9	29.0	31.5	26.1
48	30.9	33.1	28.6	31.3	33.4	29.0	28.2	30.7	25.3
49	30.1	32.2	27.8	30.4	32.6	28.2	27.4	29.8	24.5
50	29.3	31.3	27.0	29.6	31.7	27.4	26.6	29.0	23.8
51	28.4	30.5	26.2	28.7	30.8	26.6	25.8	28.2	23.0
52	27.6	29.6	25.4	27.9	29.9	25.7	25.0	27.3	22.3
53	26.8	28.7	24.6	27.1	29.0	24.9	24.3	26.5	21.6
54	26.0	27.9	23.8	26.2	28.2	24.1	23.5	25.7	20.9
55	25.1	27.0	23.0	25.4	27.3	23.4	22.8	25.0	20.2
56	24.3	26.2	22.3	24.6	26.5	22.6	22.1	24.2	19.5
57	23.6	25.4	21.5	23.8	25.6	21.8	21.3	23.4	18.8
58	22.8	24.5	20.8	23.0	24.8	21.1	20.7	22.7	18.2
59	22.0	23.7	20.0	22.2	24.0	20.3	20.0	21.9	17.5

Appendix I. Cont'd.

Age	All Races			White			Black		
	Both	Female	Male	Both	Female	Male	Both	Female	Male
60	21.2	22.9	19.3	21.5	23.1	19.6	19.3	21.2	16.9
61	20.5	22.1	18.6	20.7	22.3	18.8	18.6	20.5	16.3
62	19.8	21.4	17.9	19.9	21.5	18.1	18.0	19.7	15.8
63	19.0	20.6	17.2	19.2	20.8	17.4	17.4	19.0	15.2
64	18.3	19.8	16.5	18.5	20.0	16.7	16.7	18.3	14.6
65	17.6	19.1	15.8	17.8	19.2	16.0	16.1	17.6	14.1
66	16.9	18.3	15.2	17.0	18.5	15.3	15.5	17.0	13.5
67	16.2	17.6	14.5	16.3	17.7	14.6	14.9	16.3	13.0
68	15.5	16.9	13.9	15.6	17.0	14.0	14.3	15.7	12.4
69	14.8	16.1	13.2	15.0	16.3	13.4	13.7	15.1	11.9
70	14.2	15.4	12.6	14.3	15.5	12.7	13.2	14.4	11.4
71	13.6	14.7	12.0	13.6	14.8	12.1	12.6	13.8	10.8
72	12.9	14.1	11.4	13.0	14.2	11.5	12.1	13.2	10.4
73	12.3	13.4	10.8	12.4	13.5	10.9	11.6	12.7	9.9
74	11.7	12.8	10.3	11.8	12.9	10.4	11.0	12.1	9.4
75	11.1	12.1	9.8	11.2	12.2	9.8	10.5	11.5	9.0
76	10.6	11.5	9.2	10.6	11.6	9.3	10.1	11.0	8.6
77	10.0	10.9	8.7	10.1	11.0	8.8	9.6	10.5	8.2
78	9.5	10.3	8.2	9.5	10.4	8.3	9.2	10.0	7.8
79	9.0	9.8	7.8	9.0	9.8	7.8	8.8	9.6	7.5
80	8.5	9.2	7.3	8.5	9.2	7.3	8.4	9.1	7.1
81	8.0	8.7	6.9	8.0	8.7	6.9	8.0	8.7	6.8
82	7.5	8.2	6.5	7.5	8.2	6.5	7.6	8.2	6.5
83	7.1	7.7	6.1	7.1	7.7	6.1	7.2	7.8	6.2
84	6.7	7.2	5.7	6.6	7.2	5.7	6.9	7.4	5.9
85	6.3	6.8	5.4	6.2	6.8	5.4	6.5	7.0	5.6
86	5.9	6.4	5.0	5.8	6.3	5.0	6.2	6.7	5.3
87	5.5	6.0	4.7	5.5	5.9	4.7	5.9	6.3	5.0
88	5.2	5.6	4.4	5.1	5.5	4.4	5.6	6.0	4.7
89	4.8	5.2	4.1	4.8	5.2	4.1	5.3	5.7	4.5
90	4.5	4.9	3.9	4.5	4.8	3.8	5.0	5.3	4.3
91	4.2	4.5	3.6	4.2	4.5	3.6	4.8	5.0	4.0
92	4.0	4.2	3.4	3.9	4.2	3.3	4.5	4.8	3.8
93	3.7	3.9	3.2	3.6	3.9	3.1	4.3	4.5	3.6
94	3.5	3.7	3.0	3.4	3.6	2.9	4.0	4.2	3.4
95	3.2	3.4	2.8	3.2	3.4	2.7	3.8	4.0	3.3
96	3.0	3.2	2.6	3.0	3.1	2.5	3.6	3.8	3.1
97	2.8	3.0	2.4	2.8	2.9	2.4	3.4	3.6	2.9
98	2.6	2.8	2.3	2.6	2.7	2.2	3.2	3.4	2.8
99	2.4	2.6	2.1	2.4	2.5	2.1	3.1	3.2	2.6
100	2.3	2.4	2.0	2.2	2.3	1.9	2.9	3.0	2.5
101	2.1	2.2	1.9	2.1	2.2	1.8	2.7	2.8	2.4
102	2.0	2.1	1.7	1.9	2.0	1.7	2.6	2.6	2.3
103	1.9	1.9	1.6	1.8	1.9	1.6	2.4	2.5	2.2
104	1.7	1.8	1.5	1.7	1.7	1.5	2.3	2.3	2.1
105	1.6	1.7	1.4	1.6	1.6	1.4	2.2	2.2	2.0
106	1.5	1.5	1.3	1.5	1.5	1.3	2.1	2.1	1.9
107	1.4	1.4	1.2	1.3	1.4	1.2	1.9	2.0	1.8
108	1.3	1.3	1.2	1.3	1.3	1.1	1.8	1.8	1.7
109	1.2	1.2	1.1	1.2	1.2	1.0	1.7	1.7	1.6

**All races include races other than white and black.*

Appendix II. Life Expectancy Table for Tennessee Metro Regions, 2004-2006

Age	Davidson	Hamilton	Knox	Madison	Shelby	Sullivan
0	75.6	76.0	76.9	75.2	74.4	75.3
1	75.1	75.7	76.4	75.2	74.4	74.9
2	74.2	74.7	75.4	74.2	73.4	74.0
3	73.2	73.8	74.4	73.2	72.5	73.0
4	72.2	72.8	73.5	72.3	71.5	72.0
5	71.3	71.8	72.5	71.3	70.5	71.0
6	70.3	70.8	71.5	70.3	69.5	70.1
7	69.3	69.8	70.5	69.3	68.5	69.1
8	68.3	68.8	69.5	68.3	67.5	68.1
9	67.3	67.8	68.5	67.3	66.6	67.1
10	66.3	66.8	67.5	66.3	65.6	66.1
11	65.3	65.8	66.5	65.3	64.6	65.1
12	64.3	64.8	65.5	64.3	63.6	64.1
13	63.4	63.9	64.5	63.3	62.6	63.1
14	62.4	62.9	63.5	62.4	61.6	62.2
15	61.4	61.9	62.6	61.4	60.6	61.2
16	60.5	60.9	61.6	60.4	59.6	60.2
17	59.5	59.9	60.6	59.5	58.7	59.3
18	58.6	59.0	59.7	58.5	57.7	58.3
19	57.6	58.0	58.7	57.6	56.8	57.4
20	56.7	57.1	57.7	56.7	55.8	56.4
21	55.8	56.1	56.8	55.8	54.9	55.5
22	54.8	55.2	55.8	54.8	54.0	54.5
23	53.9	54.3	54.9	53.9	53.1	53.6
24	53.0	53.4	54.0	53.0	52.2	52.7
25	52.1	52.4	53.0	52.1	51.3	51.8
26	51.1	51.5	52.1	51.1	50.4	50.9
27	50.2	50.5	51.1	50.2	49.4	50.0
28	49.2	49.6	50.2	49.2	48.5	49.1
29	48.3	48.6	49.3	48.2	47.6	48.2
30	47.3	47.7	48.3	47.3	46.7	47.3
31	46.4	46.7	47.4	46.3	45.8	46.4
32	45.4	45.8	46.4	45.4	44.9	45.4
33	44.5	44.8	45.5	44.5	43.9	44.5
34	43.5	43.9	44.6	43.5	43.0	43.6
35	42.6	43.0	43.6	42.6	42.1	42.7
36	41.7	42.0	42.7	41.7	41.2	41.7
37	40.8	41.1	41.7	40.8	40.3	40.8
38	39.8	40.1	40.8	39.9	39.4	39.9
39	38.9	39.2	39.9	39.0	38.5	39.0
40	38.0	38.3	39.0	38.1	37.6	38.1
41	37.2	37.4	38.1	37.2	36.7	37.2
42	36.3	36.5	37.2	36.3	35.8	36.3
43	35.4	35.6	36.3	35.4	34.9	35.5
44	34.5	34.7	35.4	34.5	34.1	34.6
45	33.7	33.8	34.5	33.7	33.2	33.7
46	32.8	32.9	33.7	32.8	32.3	32.9
47	32.0	32.1	32.8	31.9	31.5	32.0
48	31.1	31.2	31.9	31.1	30.6	31.2
49	30.3	30.3	31.1	30.2	29.8	30.3
50	29.5	29.5	30.2	29.4	29.0	29.5
51	28.7	28.7	29.4	28.5	28.1	28.7
52	27.8	27.8	28.6	27.7	27.3	27.8
53	27.0	27.0	27.7	26.9	26.5	27.0
54	26.2	26.2	26.9	26.0	25.7	26.2
55	25.4	25.4	26.1	25.2	24.9	25.4
56	24.6	24.6	25.3	24.4	24.1	24.6
57	23.9	23.8	24.5	23.6	23.4	23.8
58	23.1	23.1	23.7	22.9	22.6	23.0
59	22.3	22.3	22.9	22.1	21.8	22.2

Appendix II. Cont'd.

Age	Davidson	Hamilton	Knox	Madison	Shelby	Sullivan
60	21.6	21.5	22.1	21.3	21.1	21.4
61	20.8	20.8	21.3	20.6	20.4	20.7
62	20.1	20.0	20.5	19.8	19.6	19.9
63	19.4	19.3	19.8	19.1	18.9	19.1
64	18.7	18.5	19.0	18.4	18.2	18.4
65	17.9	17.8	18.3	17.7	17.5	17.6
66	17.2	17.1	17.6	17.0	16.9	16.9
67	16.6	16.4	16.8	16.3	16.2	16.2
68	15.9	15.7	16.1	15.6	15.5	15.5
69	15.2	15.0	15.5	15.0	14.9	14.8
70	14.6	14.4	14.8	14.4	14.3	14.2
71	13.9	13.8	14.1	13.7	13.7	13.5
72	13.3	13.1	13.5	13.1	13.1	12.9
73	12.7	12.5	12.9	12.5	12.5	12.3
74	12.1	11.9	12.3	11.9	11.9	11.7
75	11.5	11.3	11.7	11.3	11.3	11.1
76	10.9	10.7	11.1	10.8	10.8	10.6
77	10.3	10.2	10.5	10.2	10.2	10.0
78	9.8	9.6	9.9	9.7	9.7	9.5
79	9.3	9.1	9.4	9.2	9.2	8.9
80	8.7	8.6	8.9	8.7	8.7	8.4
81	8.3	8.1	8.4	8.2	8.3	7.9
82	7.8	7.6	7.9	7.7	7.8	7.5
83	7.3	7.2	7.4	7.3	7.4	7.0
84	6.9	6.7	7.0	6.9	6.9	6.6
85	6.5	6.3	6.6	6.4	6.5	6.2
86	6.1	5.9	6.2	6.0	6.1	5.8
87	5.7	5.6	5.8	5.7	5.8	5.5
88	5.3	5.2	5.5	5.3	5.4	5.1
89	5.0	4.9	5.1	5.0	5.1	4.8
90	4.7	4.6	4.8	4.7	4.7	4.5
91	4.4	4.3	4.5	4.4	4.4	4.2
92	4.1	4.0	4.2	4.1	4.2	3.9
93	3.8	3.7	3.9	3.8	3.9	3.7
94	3.6	3.5	3.7	3.6	3.6	3.4
95	3.4	3.3	3.4	3.3	3.4	3.2
96	3.1	3.1	3.2	3.1	3.2	3.0
97	2.9	2.9	3.0	2.9	3.0	2.8
98	2.7	2.7	2.8	2.7	2.8	2.6
99	2.5	2.5	2.6	2.5	2.6	2.4
100	2.4	2.3	2.4	2.4	2.4	2.2
101	2.2	2.2	2.3	2.2	2.3	2.1
102	2.0	2.0	2.1	2.1	2.1	1.9
103	1.9	1.9	2.0	1.9	2.0	1.8
104	1.8	1.8	1.8	1.8	1.9	1.7
105	1.6	1.6	1.7	1.7	1.8	1.5
106	1.5	1.5	1.6	1.6	1.6	1.4
107	1.4	1.4	1.5	1.5	1.5	1.3
108	1.3	1.3	1.4	1.4	1.4	1.2
109	1.2	1.2	1.3	1.3	1.4	1.1

Appendix III. Life Expectancy Table for Tennessee Rural Regions, 2004-2006

Age	East	Mid Cumberland	Northeast	Northwest	South Central	Southeast	Southwest	Upper Cumberland
0	75.3	77.0	74.8	74.0	74.6	75.0	74.4	74.8
1	74.7	76.5	74.5	73.7	74.2	74.6	74.2	74.3
2	73.8	75.5	73.5	72.7	73.3	73.7	73.2	73.4
3	72.8	74.6	72.5	71.8	72.3	72.7	72.3	72.4
4	71.8	73.6	71.6	70.8	71.4	71.7	71.3	71.5
5	70.9	72.6	70.6	69.8	70.4	70.7	70.3	70.5
6	69.9	71.6	69.6	68.8	69.4	69.7	69.3	69.5
7	68.9	70.6	68.6	67.8	68.4	68.7	68.3	68.5
8	67.9	69.6	67.6	66.8	67.4	67.8	67.4	67.5
9	66.9	68.6	66.6	65.8	66.4	66.8	66.4	66.5
10	65.9	67.6	65.6	64.9	65.4	65.8	65.4	65.5
11	64.9	66.6	64.6	63.9	64.4	64.8	64.4	64.5
12	64.0	65.6	63.6	62.9	63.4	63.8	63.4	63.5
13	63.0	64.6	62.6	61.9	62.5	62.8	62.4	62.5
14	62.0	63.7	61.7	60.9	61.5	61.8	61.4	61.5
15	61.0	62.7	60.7	59.9	60.5	60.8	60.5	60.6
16	60.0	61.7	59.7	58.9	59.6	59.9	59.5	59.6
17	59.1	60.7	58.8	58.0	58.6	58.9	58.5	58.7
18	58.1	59.8	57.8	57.0	57.7	58.0	57.6	57.7
19	57.2	58.8	56.9	56.1	56.7	57.1	56.6	56.8
20	56.3	57.9	56.0	55.2	55.8	56.1	55.7	55.8
21	55.3	56.9	55.0	54.2	54.9	55.2	54.8	54.9
22	54.4	56.0	54.1	53.3	54.0	54.3	53.8	54.0
23	53.5	55.1	53.2	52.4	53.1	53.3	52.9	53.1
24	52.6	54.1	52.3	51.4	52.2	52.4	52.0	52.2
25	51.6	53.2	51.4	50.5	51.3	51.4	51.1	51.2
26	50.7	52.2	50.5	49.6	50.4	50.5	50.1	50.3
27	49.8	51.3	49.5	48.7	49.4	49.5	49.2	49.4
28	48.9	50.3	48.6	47.7	48.5	48.6	48.3	48.5
29	47.9	49.4	47.7	46.8	47.6	47.6	47.4	47.5
30	47.0	48.4	46.8	45.9	46.6	46.7	46.4	46.6
31	46.1	47.5	45.8	44.9	45.7	45.8	45.5	45.7
32	45.1	46.5	44.9	44.0	44.8	44.8	44.6	44.8
33	44.2	45.6	43.9	43.0	43.9	43.9	43.6	43.8
34	43.3	44.6	43.0	42.1	42.9	43.0	42.7	42.9
35	42.4	43.7	42.1	41.2	42.0	42.1	41.8	42.0
36	41.5	42.7	41.1	40.2	41.1	41.2	40.9	41.1
37	40.5	41.8	40.2	39.3	40.1	40.2	40.0	40.2
38	39.6	40.8	39.3	38.4	39.2	39.3	39.1	39.3
39	38.7	39.9	38.4	37.5	38.3	38.4	38.2	38.4
40	37.8	39.0	37.5	36.7	37.4	37.5	37.3	37.5
41	36.9	38.0	36.6	35.8	36.5	36.7	36.4	36.6
42	36.1	37.1	35.7	34.9	35.6	35.8	35.5	35.8
43	35.2	36.2	34.8	34.1	34.7	34.9	34.6	34.9
44	34.3	35.3	33.9	33.2	33.8	34.0	33.8	34.1
45	33.4	34.3	33.0	32.4	32.9	33.2	32.9	33.2
46	32.6	33.4	32.2	31.5	32.1	32.3	32.1	32.4
47	31.7	32.5	31.3	30.7	31.2	31.4	31.2	31.5
48	30.9	31.6	30.4	29.8	30.4	30.6	30.4	30.7
49	30.0	30.8	29.6	29.0	29.5	29.7	29.5	29.9
50	29.2	29.9	28.8	28.2	28.7	28.9	28.7	29.1
51	28.4	29.0	28.0	27.4	27.8	28.1	27.9	28.2
52	27.5	28.1	27.1	26.6	27.0	27.2	27.1	27.4
53	26.7	27.3	26.3	25.8	26.2	26.4	26.3	26.6
54	25.9	26.4	25.5	25.0	25.3	25.6	25.5	25.8
55	25.1	25.6	24.8	24.2	24.5	24.8	24.7	25.0
56	24.3	24.8	24.0	23.4	23.8	24.0	23.9	24.3
57	23.5	23.9	23.1	22.6	23.0	23.2	23.1	23.5
58	22.8	23.1	22.4	21.9	22.2	22.5	22.4	22.7
59	22.0	22.3	21.6	21.2	21.4	21.7	21.6	21.9

Appendix III. Cont'd.

Age	East	Mid Cumberland	Northeast	Northwest	South Central	Southeast	Southwest	Upper Cumberland
60	21.2	21.5	20.8	20.4	20.7	20.9	20.9	21.2
61	20.5	20.7	20.0	19.7	19.9	20.2	20.2	20.5
62	19.7	20.0	19.3	19.0	19.2	19.4	19.4	19.7
63	19.0	19.2	18.6	18.3	18.5	18.7	18.7	19.0
64	18.3	18.5	17.8	17.7	17.8	17.9	18.0	18.3
65	17.6	17.7	17.1	17.0	17.1	17.2	17.3	17.6
66	16.9	17.0	16.4	16.3	16.4	16.5	16.6	16.9
67	16.2	16.3	15.7	15.7	15.7	15.8	16.0	16.2
68	15.5	15.5	15.0	15.0	15.0	15.2	15.3	15.5
69	14.9	14.8	14.3	14.4	14.4	14.5	14.7	14.9
70	14.2	14.1	13.6	13.8	13.8	13.9	14.1	14.2
71	13.5	13.5	13.0	13.1	13.1	13.2	13.4	13.6
72	12.9	12.9	12.3	12.5	12.5	12.6	12.8	12.9
73	12.3	12.2	11.7	11.9	11.9	12.0	12.3	12.3
74	11.7	11.6	11.1	11.3	11.3	11.4	11.7	11.7
75	11.1	11.1	10.5	10.7	10.7	10.9	11.1	11.1
76	10.5	10.5	10.0	10.2	10.1	10.3	10.6	10.6
77	9.9	9.9	9.4	9.6	9.6	9.7	10.1	10.0
78	9.4	9.4	8.8	9.1	9.1	9.2	9.6	9.5
79	8.9	8.9	8.3	8.6	8.6	8.7	9.1	8.9
80	8.4	8.4	7.8	8.1	8.1	8.1	8.7	8.4
81	7.9	7.9	7.3	7.7	7.6	7.6	8.2	8.0
82	7.4	7.4	6.9	7.2	7.2	7.2	7.8	7.5
83	6.9	7.0	6.4	6.8	6.7	6.7	7.3	7.1
84	6.4	6.6	6.0	6.4	6.3	6.3	6.9	6.6
85	6.1	6.2	5.6	6.0	5.9	5.9	6.5	6.2
86	5.7	5.8	5.3	5.6	5.6	5.6	6.1	5.9
87	5.3	5.4	4.9	5.2	5.2	5.2	5.7	5.5
88	5.0	5.1	4.6	4.9	4.9	4.9	5.4	5.1
89	4.7	4.8	4.3	4.6	4.6	4.6	5.0	4.8
90	4.4	4.4	4.0	4.3	4.3	4.3	4.7	4.5
91	4.1	4.2	3.8	4.0	4.0	4.0	4.4	4.2
92	3.8	3.9	3.5	3.7	3.7	3.7	4.1	3.9
93	3.5	3.6	3.3	3.5	3.5	3.5	3.9	3.7
94	3.3	3.4	3.0	3.3	3.2	3.2	3.6	3.4
95	3.1	3.2	2.8	3.0	3.0	3.0	3.4	3.2
96	2.9	2.9	2.6	2.8	2.8	2.8	3.2	3.0
97	2.7	2.7	2.4	2.6	2.6	2.6	3.0	2.8
98	2.5	2.6	2.3	2.5	2.4	2.4	2.8	2.6
99	2.3	2.4	2.1	2.3	2.3	2.2	2.6	2.4
100	2.1	2.2	1.9	2.1	2.1	2.1	2.4	2.3
101	2.0	2.1	1.8	2.0	1.9	1.9	2.3	2.1
102	1.8	1.9	1.7	1.8	1.8	1.8	2.1	2.0
103	1.7	1.8	1.5	1.7	1.7	1.6	2.0	1.8
104	1.5	1.7	1.4	1.6	1.6	1.5	1.9	1.7
105	1.4	1.5	1.3	1.5	1.4	1.4	1.8	1.6
106	1.3	1.4	1.2	1.4	1.3	1.3	1.7	1.5
107	1.2	1.3	1.1	1.3	1.2	1.2	1.6	1.4
108	1.1	1.2	1.0	1.2	1.1	1.1	1.5	1.3
109	1.0	1.1	0.9	1.1	1.0	1.0	1.4	1.2